

CONNECTORS

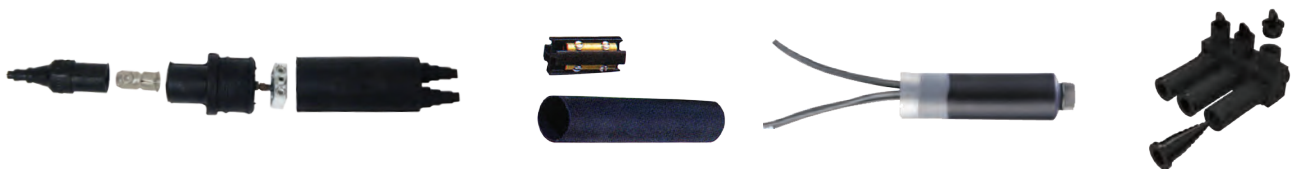
INSULATED CONNECTORS A1 - A6



POWER CONNECTORS A7 - A34



SPLICING A35 - A38



HEAT SHRINK A39 - A43





Clear Insulated In-line Splices

NEW
WIRE SIZES
AVAILABLE
JUNE 2020



Dual-Rated
CU9AL
90°C 600V

- Clear Insulation
- 6061-T6 Aluminum
- Insulated with Rugged High-Dielectric Plastisol Dipped Coating
- Pre-filled with Oxide Inhibitor
- Easy Re-Entry for Changes, Inspection or Troubleshooting
- Plugs Marked with Connector Max Wire Size for Easy ID
- CU9AL Dual Rated for use with Copper and/or Aluminum Wire
- One Wire Per Terminal
- Temperature Range of -49°F to 194°F (-45° to 90°C)
- 600 Volt
- Rated For Use with 90°C Cables
- ANSI C119.4 & UL 486A & 486B Listed



DIMENSIONS - INCHES

CAT. NO.	WIRE RANGE	ALLEN HEX	LENGTH	WIDTH	HEIGHT	BOX QTY
97302	2-14	SLOTTED	3.46	.82	1.62	12
NEW 97303	1/0-14	3/16	3.55	.96	2.05	12
97304	2/0-2	3/16	3.50	.99	1.95	12
97305	250-6	5/16	4.26	1.26	2.28	4
97306	350-6	5/16	5.21	1.33	2.63	4
97307	500-6	5/16	5.99	1.84	3.19	2
NEW 97308	600-250	5/16	6.18	1.77	3.17	2
NEW 97309	750-250	3/8	7.39	1.84	3.55	2

Clear Insulated Connectors - Single Side Entry

NEW
AVAILABLE
JUNE 2020



DIMENSIONS - INCHES

CAT. NO.	WIRE RANGE	PORTS	ALLEN HEX	LENGTH	WIDTH	HEIGHT	BOX QTY
97324	4-14	2	SLOTTED	1.13	1.10	1.38	12
97450	4-14	3	SLOTTED	1.50	1.10	1.45	12
97451	4-14	4	SLOTTED	1.92	1.10	1.45	12
97326	2-14	2	SLOTTED	1.15	1.20	1.42	12
97458	2-14	3	SLOTTED	1.60	1.20	1.50	12
97459	2-14	4	SLOTTED	2.02	1.20	1.50	12
97328	1/0-2	2	3/16	1.69	1.80	1.93	10
97465	1/0-2	3	3/16	1.90	1.80	1.93	10
97466	1/0-2	4	3/16	2.49	1.80	1.93	10
97330	2/0-6	2	3/16	1.69	1.80	1.93	10
97473	2/0-6	3	3/16	1.90	1.80	1.93	10
97474	2/0-6	4	3/16	2.49	1.80	1.93	10
97331	3/0-6	2	1/4	2.00	1.90	1.99	6
97481	3/0-6	3	1/4	2.10	1.90	1.99	6
97482	3/0-6	4	1/4	2.87	1.90	1.99	6

CAT. NO.	WIRE RANGE	PORTS	ALLEN HEX	LENGTH	WIDTH	HEIGHT	BOX QTY
97487	250-6	2	5/16	2.18	2.48	2.37	6
97488	250-6	3	5/16	2.40	2.48	2.37	6
97489	250-6	4	5/16	3.29	2.48	2.37	4
97494	350-6	2	5/16	2.50	2.67	2.64	6
97495	350-6	3	5/16	2.80	2.67	2.64	4
97496	350-6	4	5/16	3.85	2.67	2.64	4
97501	500-6	2	5/16	2.98	2.70	2.85	12
97502	500-6	3	5/16	3.18	2.70	2.85	4
97503	500-6	4	5/16	4.35	2.70	2.85	4
97505	600-250	2	5/16	2.98	2.95	2.85	4
97506	600-250	3	5/16	3.40	2.95	2.85	4
97507	600-250	4	5/16	4.68	2.95	2.85	4
97509	750-250	2	3/8	3.33	3.44	3.52	4
97510	750-250	3	3/8	3.60	3.44	3.52	4
97511	750-250	4	3/8	5.03	3.44	3.52	4

Clear Insulated 2 Conductor - Dual Side Entry

UL US
LISTED
Dual-Rated
CU9AL
90°C 600V

- Clear Insulation
- 6061-T6 Aluminum
- Insulated with Rugged High-Dielectric Plastisol Dipped Coating
- Pre-filled with Oxide Inhibitor
- Easy Re-Entry for Changes, Inspection or Troubleshooting
- Plugs Marked with Connector Max Wire Size for Easy ID
- CU9AL Dual Rated for use with Copper and/or Aluminum Wire
- One Wire Per Terminal
- Temperature Range of -49°F to 194°F (-45° to 90°C)
- 600 Volt
- Rated For Use with 90°C Cables
- ANSI C119.4 & UL 486A & 486B Listed



DIMENSIONS = INCHES

CAT. NO.	WIRE RANGE	ALLEN HEX	LENGTH	WIDTH	HEIGHT	BOX QTY
97312	4-14	SLOTTED	1.13	1.25	1.38	12
97332	2-14	SLOTTED	1.15	1.50	1.42	12
NEW 97342	1/0-2	3/16	1.69	1.80	1.93	10
97352	2/0-6	3/16	1.69	1.80	1.93	10
97372	3/0-6	1/4	2.00	1.74	2.00	6
97392	250-6	5/16	2.18	2.48	2.37	6

DIMENSIONS = INCHES

CAT. NO.	WIRE RANGE	ALLEN HEX	LENGTH	WIDTH	HEIGHT	BOX QTY
97412	350-6	5/16	2.50	2.67	2.50	6
97432	500-6	5/16	2.98	3.38	2.85	4
NEW 97532	600-250	5/16	2.98	3.38	2.85	4
NEW 97631	750-250	3/8	3.33	3.44	3.52	2
NEW 97632*	750-250	3/8	3.33	3.44	3.52	2

* Dual Set Screw Configuration (4 Set Screws - 2 Per Part)

Clear Insulated Dual Side Entry



DIMENSIONS = INCHES

CAT. NO.	NO. OF PORTS	WIRE RANGE	ALLEN HEX	LENGTH	WIDTH	HEIGHT	BOX QTY
97314	3	4-14	SLOTTED	1.50	1.21	1.45	6
97316	4			1.92			6
97320	6			2.75			4
97322	8			3.59			3
97333	3	2-14	SLOTTED	1.60	1.21	1.45	6
97334	4			2.02			6
97336	6			2.85			4
97338	8			3.69			3
97354	3	2/0-14	3/16	1.90	1.80	1.85	8
97356	4			2.49			6
97360	6			3.67			4
97362	8			4.85			3
97373	3	3/0-14	1/4	2.10	2.09	1.99	6
NEW 97374	4			2.87			6
97376	6			4.41			3
97378	8			5.96			3
97394	3	250-6	5/16	2.40	2.40	2.49	6
97396	4			3.29			4
97400	6			5.06			3
97402	8			6.83			3
97414	3	350-250	5/16	2.80	2.75	2.64	6
97416	4			3.85			4
97420	6			5.95			3
97422	8			8.06			3
97434	3	500-250	5/16	3.18	2.97	3.03	4
97436	4			4.35			4
97440	6			6.70			2
97442	8			9.05			2
97539	3	600-250	5/16	3.40	3.25	3.11	4
NEW 97540	4			4.68			4
97541	6			7.23			2
97542	8			9.78			2
97425	3	750-250	3/8	3.60	3.85	3.60	4
NEW 97426	4			5.03			4
97427	6			7.88			4
97428	8			10.73			2



Black Insulated Connectors

- 6061-T6 Aluminum
- Insulated with Rugged High-Dielectric Plastisol Dipped Coating
- Pre-filled with Oxide Inhibitor
- Easy Re-Entry for Changes, Inspection or Troubleshooting
- Plugs Marked with Connector Max Wire Size for Easy Identification
- CU9AL Dual Rated for use with Copper and/or Aluminum Wire
- One Wire Per Terminal
- Temperature Range of -49°F to 194°F (-45° to 90°C)
- 600 Volts
- Rated For Use with 90°C Cables
- UL Listed Through 750 MCM
- ANSI C119.4 & UL 486B listed



Insulated In-Line Splices

DIMENSIONS = INCHES



FIG 1



FIG 2

CAT. NO.	WIRE RANGE	FIG.	ALLEN HEX	LENGTH	WIDTH	HEIGHT	BOX QTY
97017	2-14	1	SLOTTED	3.46	.82	1.62	12
97019	1/0-14	1	3/16	3.55	.96	2.05	12
97020	2/0-6	1	3/16	3.55	.96	2.05	12
97021	250-6	1	5/16	4.26	1.26	2.28	4
97022	350-6	1	5/16	5.21	1.33	2.63	4
97023	500-6	1	5/16	5.99	1.50	2.88	2
97024	600-250	1	5/16	6.18	1.77	3.17	2
97028*	750-250	2	3/8	7.39	1.84	3.55	2

* Dual Set Screw Configuration (4 Set Screws)

Insulated 2 Conductor - Single Side Entry

DIMENSIONS = INCHES



CAT. NO.	WIRE RANGE	ALLEN HEX	LENGTH	WIDTH	HEIGHT	BOX QTY
97102	4-14	SLOTTED	1.13	1.25	1.38	12
97103	2-14	SLOTTED	1.15	1.50	1.42	12
97105	1/0-14	3/16	1.69	1.80	1.93	10
97106	2/0-6	3/16	1.69	1.80	1.93	10
97107	3/0-6	1/4	2.00	1.75	2.00	8

Insulated 2 Conductor - OffSet Entry



DIMENSIONS = INCHES



CAT. NO.	WIRE RANGE	ALLEN HEX	LENGTH	WIDTH	HEIGHT	BOX QTY
97050	4-14	SLOTTED	1.13	1.25	1.38	12
97052	2-14	SLOTTED	1.15	1.50	1.42	12
97056	2/0-6	3/16	1.69	1.80	1.93	10
97058	3/0-6	1/4	2.18	2.48	2.37	8
97060	250-6	5/16	2.20	2.41	2.22	6

Insulated 2 Conductor - Dual Side Entry

DIMENSIONS = INCHES



FIG 1



FIG 2

CAT. NO.	WIRE RANGE	FIG.	ALLEN HEX	LENGTH	WIDTH	HEIGHT	BOX QTY
97112	4-14	1	SLOTTED	1.13	1.50	1.38	12
97113	2-14	1	SLOTTED	1.15	1.50	1.42	12
97115	1/0-14	1	3/16	1.62	1.83	1.83	6
97116	2/0-6	1	3/16	1.69	1.88	1.93	10
97117	3/0-6	1	1/4	2.18	2.48	2.37	8
97118	250-6	1	5/16	2.20	2.41	2.22	6
97120	350-6	1	5/16	2.60	2.80	2.62	4
97121	500-6	1	5/16	2.88	3.14	3.04	2
97122	600-250	1	5/16	2.98	3.38	3.25	4
97124	750-250	1	3/8	3.33	3.44	3.52	2
97125*	750-250	2	3/8	3.33	4.50	3.52	2

* Dual Set Screw Configuration (4 Set Screws - 2 Per Part)

Insulated Splices - Single Side Entry



Dual-Rated
CU9AL
90°C 600V



- Wire Entry from 1 (Same) Side in Stub Termination Configuration

DIMENSIONS = INCHES

CAT. NO.	WIRE PORTS	WIRE RANGE	ALLEN HEX	LENGTH	HEIGHT	BOX QTY
97513	3			1.50		12
97514	4			1.92		12
97515	5	4-14	SLOTTED	2.33	1.45	6
97516	6			2.75		4
97518	8			3.59		3
97519	3			1.60		6
97520	4			2.02		6
97521	5	2-14	SLOTTED	2.43	1.50	4
97522	6			2.85		4
97524	8			3.69		3
97525	3			1.90		8
97526	4			2.49		6
97527	5	1/0-14	3/16	3.08	1.85	4
97528	6			3.67		4
97530	8			4.85		3
97533	3			1.90		8
97534	4			2.49		6
97535	5	2/0-6	3/16	3.08	1.85	4
97536	6			3.67		4
97538	8			4.85		3
97579	3			2.10		6
97580	4			2.87		6
97581	5	3/0-6	1/4	3.64	1.99	4
97582	6			4.41		3
97584	8			5.96		3
97543	3			2.40		6
97544	4			3.29		4
97545	5	250-6	5/16	4.17	2.49	4
97546	6			5.06		4
97548	8			6.83		3
97553	3			2.80		6
97554	4			3.85		4
97555	5	350-6	5/16	4.90	2.64	4
97556	6			5.95		3
97558	8			8.06		3
97585	3			3.18		4
97586	4			4.35		4
97587	5	500-4	5/16	5.53	3.03	4
97588	6			6.70		2
97590	8			9.05		2
97563	3			3.40		4
97564	4			4.68		4
97565	5	600-250	5/16	5.95	3.11	4
97566	6			7.23		2
97568	8			9.78		2
97573	3			3.60		4
97574	4			5.03		4
97575	5	750-250	3/8	6.45	3.60	4
97576	6			7.88		4
97578	8			10.73		2



CONNECTORS
Insulated Connectors

Insulated Splices - Dual Side Entry



Dual-Rated
CU9AL
90°C 600V



- Dual Side Entry
- 6061-T6 Aluminum
- Insulated with Rugged High-Dielectric Plastisol Dipped Coating
- Pre-filled with Oxide Inhibitor
- Easy Re-Entry for Changes, Inspection or Troubleshooting
- Plugs Marked with Connector Max Wire Size for Easy Identification
- CU9AL Dual Rated for use with Copper and/or Aluminum Wire
- One Wire Per Terminal
- Temperature Range of -49°F to 194°F (-45° to 90°C)
- 600 Volts
- Rated For Use with 90°C Cables
- UL Listed Through 750 MCM
- ANSI C119.4 & UL 486B listed

DIMENSIONS = INCHES

CAT. NO.	WIRE PORTS	WIRE RANGE	ALLEN HEX	LENGTH	HEIGHT	BOX QTY
97613	3			1.50		12
97614	4			1.92		6
97615	5	4-14	SLOTTED	2.33	1.45	6
97616	6			2.75		4
97618	8			3.59		3
97624	3			1.60		6
97625	4			2.02		6
97626	5	2-14	SLOTTED	2.43	1.50	6
97627	6			2.85		4
97629	8			3.69		3
97633	3			1.90		8
97634	4			2.49		6
97635	5			3.08		4
97636	6	2/0-6	3/16	3.67	1.85	4
97638	8			4.85		3
97640	10			6.03		3
97642	12			7.21		4
97683	3			2.10		6
97684	4			2.87		6
97685	5			3.64		4
97686	6	3/0-6	1/4	4.41	1.99	3
97688	8			5.96		3
97690	10			7.50		3
97692	12			9.04		3
97643	3			2.40		6
97644	4			3.29		4
97645	5			4.17		4
97646	6	250-6	5/16	5.06	2.49	4
97647	7			5.94		3
97648	8			6.83		3
97650	10			8.60		3
97652	12			10.37		3

DIMENSIONS = INCHES

CAT. NO.	WIRE PORTS	WIRE RANGE	ALLEN HEX	LENGTH	HEIGHT	BOX QTY
97653	3			2.80		6
97654	4			3.85		4
97655	5			4.90		4
97656	6			5.95		3
97658	8	350-6	5/16	8.06	2.64	3
97659	9			9.11		3
97660	10			10.16		3
97662	12			12.26		3
97693	3			3.18		4
97694	4			4.35		4
97695	5			5.53		4
97696	6	500-4	5/16	6.70	3.03	2
97698	8			9.05		2
97699	9			10.22		2
97700	10			11.39		2
97702	12			13.74		2
97663	3			3.40		4
97664	4			4.68		4
97665	5			5.95		4
97666	6	600-250	5/16	7.23	3.11	2
97668	8			9.78		2
97669	9			11.05		2
97670	10			12.33		2
97672	12			14.88		2
97673	3			3.60		4
97674	4			5.03		4
97675	5			6.45		4
97676	6	750-250	3/8	7.88	3.60	4
97678	8			10.73		2
97679	9			12.15		2
97680	10			13.58		2
97682	12			16.43		2

Insulated Splices - Dual Side Entry - Mountable



Dual-Rated
CU9AL
90°C 600V

- Mountable
- Dual Side Entry
- 6061-T6 Aluminum
- Insulated with Rugged High-Dielectric Plastisol Dipped Coating
- Pre-filled with Oxide Inhibitor
- Easy Re-Entry for Changes, Inspection or Troubleshooting
- Plugs Marked with Connector Max Wire Size for Easy Identification
- CU9AL Dual Rated for use with Copper and/or Aluminum Wire
- One Wire Per Terminal
- Temperature Range of -49°F to 194°F (-45° to 90°C)
- 600 Volts
- Rated For Use with 90°C Cables
- ANSI C119.4 & UL 486B listed



DIMENSIONS = INCHES

CAT. NO.	WIRE PORTS	WIRE RANGE	ALLEN HEX	LENGTH	HEIGHT
97812	2			1.97	
97813	3			2.33	1.45
97814	4			2.75	
97816	6			3.58	
97832	2			3.08	
97833	3			3.08	1.85
97834	4	2/0-14	3/16	3.67	
97836	6			4.85	
97842	2			3.85	
97843	3			4.17	2.49
97844	4	250-6	5/16	5.06	
97846	6			6.83	
97852	2			4.57	
97853	3			4.90	2.64
97854	4	350-6	5/16	5.95	
97856	6			8.05	
97862	2			5.63	
97863	3			5.95	3.11
97864	4	600-4	5/16	7.23	
97866	6			9.78	
97872	2			6.19	
97873	3			6.45	3.60
97874	4	750-250	3/8	7.88	
97876	6			10.73	

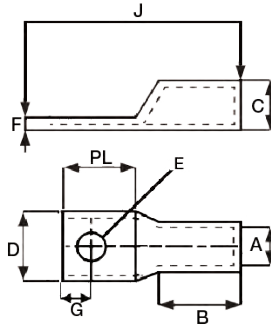
TORQUE Values

WIRE SIZE	CONNECTOR SIZE										
	750	600	500	350	250	3/0	2/0	1/0	1	#2	#4
TORQUE VALUE IN/LBS											
600-750	442										
600	442	398	310								
500	442	398	310								
400	310	398	310								
350	310	398	310	221							
250	310	398	310	221	149						
4/0			310	221	149						
3/0			310	221	149	100					
2/0			310	221	149	100	89				
1/0			310	221	149	100	89	89			
#3 - #1			310	221	149	100	89	89	89	80	
#4 - #6			310	221	149	100	89	89	89	80	35
#8							89	89	89	80	35
#10 - #14							89	89	89	80	35

Note: Do Not Use with Fine Stranded Flexible Wire



Aluminum Long Barrel 1 Hole Compression Lugs



- AL9CU Listed - For Both Aluminum and Copper Conductors
- Pre-filled with Oxide Inhibitor
- Made of High-Conductivity Seamless Aluminum
- Electro-Tin Plating Resists Corrosion, Reduces Contact Resistance for Maximum Conductivity
- Single Mounting Hole
- Color Coded Die Index and Crimp Marks Printed on Barrel
- UL 486B AL9CU Listed for Applications Thru 35KV

DIMENSIONS - INCHES

CAT. NO.	WIRE RANGE	STUD SIZE	COLOR CODE	A	C	J	B	D	F	E	G	PL	BOX QTY
93009	6 STR.	#10	GRAY	.20	.34	2.01	.86	.57	.10	.21	.38	.88	50
93010	6 STR.	1/4	GRAY	.20	.34	2.01	.86	.57	.10	.25	.38	.88	50
93012	6 STR.	5/16	GRAY	.20	.34	2.01	.86	.57	.10	.33	.38	.88	50
93014	6 STR.	3/8	GRAY	.20	.34	2.01	.86	.57	.10	.41	.38	.88	50
93016	4 STR.	1/4	GREEN	.25	.44	2.31	1.10	.57	.19	.25	.38	.88	30
93018	4 STR.	5/16	GREEN	.25	.44	2.31	1.10	.57	.19	.33	.38	.88	30
93020	4 STR.	3/8	GREEN	.25	.44	2.31	1.10	.57	.19	.41	.38	.88	30
93022	2 STR.	1/4	PINK	.31	.53	2.50	1.20	.71	.22	.25	.38	.88	30
93024	2 STR.	5/16	PINK	.31	.53	2.50	1.20	.71	.22	.33	.38	.88	30
93026	2 STR.	3/8	PINK	.31	.53	2.50	1.20	.71	.22	.41	.38	.88	30
93027	2 STR.	1/2	PINK	.31	.53	2.50	1.20	.71	.22	.51	.38	.88	30
93028	1 STR.	1/4	GOLD	.35	.53	2.50	1.20	.73	.18	.25	.38	.88	15
93030	1 STR.	5/16	GOLD	.35	.53	2.50	1.20	.73	.18	.33	.38	.88	15
93032	1 STR.	3/8	GOLD	.35	.53	2.50	1.20	.73	.18	.41	.38	.88	15
93033	1 STR.	1/2	GOLD	.35	.53	2.50	1.20	.73	.18	.51	.38	.88	15
93034	1/0 STR.	1/4	TAN	.39	.63	2.81	1.20	.85	.24	.25	.50	.93	20
93036	1/0 STR.	5/16	TAN	.39	.63	2.81	1.20	.85	.24	.33	.50	.93	20
93038	1/0 STR.	3/8	TAN	.39	.63	2.81	1.20	.85	.24	.41	.50	.93	20
93039	1/0 STR.	1/2	TAN	.39	.63	2.81	1.20	.85	.24	.51	.50	.93	20
93040	2/0 STR.	1/4	OLIVE	.44	.69	2.81	1.30	.94	.24	.25	.50	1.12	20
93042	2/0 STR.	5/16	OLIVE	.44	.69	2.81	1.30	.94	.24	.33	.50	1.12	20
93044	2/0 STR.	3/8	OLIVE	.44	.69	2.81	1.30	.94	.24	.41	.50	1.12	20
93046	2/0 STR.	1/2	OLIVE	.44	.69	2.81	1.30	.94	.24	.51	.50	1.12	20
93048	3/0 STR.	1/4	RUBY	.48	.76	3.00	1.40	1.03	.28	.25	.50	1.12	15
93050	3/0 STR.	5/16	RUBY	.48	.76	3.00	1.40	1.03	.28	.33	.50	1.12	15
93052	3/0 STR.	3/8	RUBY	.48	.76	3.00	1.40	1.03	.28	.41	.50	1.12	15
93054	3/0 STR.	1/2	RUBY	.48	.76	3.00	1.40	1.03	.28	.51	.50	1.12	15
93056	4/0 STR.	1/4	WHITE	.55	.84	3.43	1.40	1.15	.29	.25	.56	1.31	10
93058	4/0 STR.	5/16	WHITE	.55	.84	3.43	1.40	1.15	.29	.33	.56	1.31	10
93060	4/0 STR.	3/8	WHITE	.55	.84	3.43	1.40	1.15	.29	.41	.56	1.31	10
93062	4/0 STR.	1/2	WHITE	.55	.84	3.43	1.40	1.15	.29	.51	.56	1.31	10
93063	250 MCM	1/4	RED	.59	.92	3.50	1.50	1.26	.32	.25	.63	1.31	9
93064	250 MCM	3/8	RED	.59	.92	3.50	1.50	1.26	.32	.41	.63	1.31	9
93066	250 MCM	1/2	RED	.59	.92	3.50	1.50	1.26	.32	.51	.63	1.31	9
93068	300 MCM	3/8	BLUE	.65	1.01	4.00	1.60	1.37	.35	.41	.63	1.50	9
93070	300 MCM	1/2	BLUE	.65	1.01	4.00	1.60	1.37	.35	.51	.63	1.50	9
93072	350 MCM	3/8	BROWN	.72	1.12	4.25	1.90	1.52	.39	.41	.69	1.50	6
93074	350 MCM	1/2	BROWN	.72	1.12	4.25	1.90	1.52	.39	.51	.69	1.50	6
93076	400 MCM	3/8	GREEN	.76	1.19	4.60	2.30	1.61	.42	.41	.69	1.50	6
93078	400 MCM	1/2	GREEN	.76	1.19	4.60	2.30	1.61	.42	.51	.69	1.50	6
93080	500 MCM	3/8	PINK	.84	1.32	4.75	2.50	1.79	.47	.41	.75	1.50	6
93082	500 MCM	1/2	PINK	.84	1.32	4.75	2.50	1.79	.47	.51	.75	1.50	6
93084	500 MCM	5/8	PINK	.84	1.32	4.75	2.50	1.79	.47	.67	.75	1.50	6
93085	600 MCM	1/2	BLACK	.92	1.44	5.12	2.60	1.96	.51	.51	.75	1.87	4
93086	600 MCM	5/8	BLACK	.92	1.44	5.12	2.60	1.96	.51	.67	.75	1.87	4
93087	750 MCM	1/2	YELLOW	1.03	1.60	6.12	3.20	2.19	.55	.51	.94	2.00	4
93088	750 MCM	5/8	YELLOW	1.03	1.60	6.12	3.20	2.19	.55	.67	.94	2.00	4

CONNECTORS

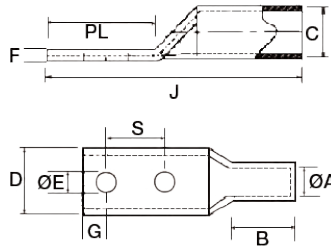
Aluminum Compression

Aluminum Long Barrel 2 Hole Compression Lugs

NEW
STUD SIZES



- AL9CU Listed - For Both Aluminum and Copper Conductors
- Pre-filled with Oxide Inhibitor
- Made of High-Conductivity Seamless Aluminum
- Electro-Tin Plating Resists Corrosion, Reduces Contact Resistance for Maximum Conductivity
- Dual Mounting Holes for Superior Contact Integrity
- Color Coded Die Index and Crimp Marks Printed on Barrel
- UL 486B AL9CU Listed for Applications Thru 35KV



DIMENSIONS = INCHES

CAT. NO.	WIRE RANGE	STUD SIZE	COLOR CODE	A	C	J	B	D	F	E	G	PL	S	BOX QTY
93110	1/0 STR.	3/8	TAN	.39	.63	3.50	1.20	.85	.24	.41	.38	1.87	1.00	10
93111	1/0 STR.	1/2	TAN	.39	.63	4.75	1.20	.85	.24	.51	.63	3.12	1.75	20
93109	2/0 STR.	3/8	OLIVE	.44	.69	4.80	1.30	.94	.24	.41	.63	3.12	1.00	20
93112	2/0 STR.	1/2	OLIVE	.44	.69	4.80	1.30	.94	.24	.51	.63	3.12	1.75	20
93113	3/0 STR.	3/8	RUBY	.48	.76	5.00	1.40	1.03	.28	.41	.63	3.12	1.00	20
93114	3/0 STR.	1/2	RUBY	.48	.76	5.00	1.40	1.03	.28	.51	.63	3.12	1.75	20
93115	4/0 STR.	3/8	WHITE	.55	.84	5.25	1.40	1.15	.29	.41	.63	3.12	1.00	12
93116	4/0 STR.	1/2	WHITE	.55	.84	5.25	1.40	1.15	.29	.51	.63	3.12	1.75	12
93117	250 MCM	3/8	RED	.59	.92	5.31	1.50	1.26	.32	.41	.63	3.12	1.00	12
93118	250 MCM	1/2	RED	.59	.92	5.31	1.50	1.26	.32	.51	.63	3.12	1.75	12
93119	300 MCM	3/8	BLUE	.65	1.01	5.50	1.60	1.37	.35	.41	.63	3.12	1.00	9
93120	300 MCM	1/2	BLUE	.65	1.01	5.50	1.60	1.37	.35	.51	.63	3.12	1.75	9
93121	350 MCM	3/8	BROWN	.72	1.12	5.87	1.90	1.52	.39	.41	.63	3.12	1.00	6
93122	350 MCM	1/2	BROWN	.72	1.12	5.87	1.90	1.52	.39	.51	.63	3.12	1.75	6
93123	400 MCM	3/8	GREEN	.76	1.19	6.43	2.30	1.61	.42	.41	.63	3.12	1.00	6
93124	400 MCM	1/2	GREEN	.76	1.19	6.43	2.30	1.61	.42	.51	.63	3.12	1.75	6
93125	500 MCM	3/8	PINK	.84	1.32	6.50	2.50	1.79	.47	.41	.63	3.12	1.00	6
93126	500 MCM	1/2	PINK	.84	1.32	6.50	2.50	1.79	.47	.51	.63	3.12	1.75	6
93127	500 MCM	5/8	PINK	.84	1.32	6.50	2.50	1.79	.47	.67	.63	3.12	1.75	6
93129	600 MCM	3/8	BLACK	.92	1.44	6.75	2.60	1.96	.51	.41	.63	3.12	1.00	4
93128	600 MCM	1/2	BLACK	.92	1.44	6.75	2.60	1.96	.51	.51	.63	3.12	1.75	4
93131	600 MCM	5/8	BLACK	.92	1.44	6.75	2.60	1.96	.51	.67	.63	3.12	1.75	4
93132	750 MCM	3/8	YELLOW	1.03	1.60	7.37	3.20	2.19	.55	.41	.63	3.12	1.00	4
93130	750 MCM	1/2	YELLOW	1.03	1.60	7.37	3.2	2.19	.55	.51	.63	3.12	1.75	4
93133	750 MCM	5/8	YELLOW	1.03	1.60	7.37	3.2	2.19	.55	.67	.63	3.12	1.75	4

Aluminum Long Barrel Compression Splices



DIMENSIONS = INCHES

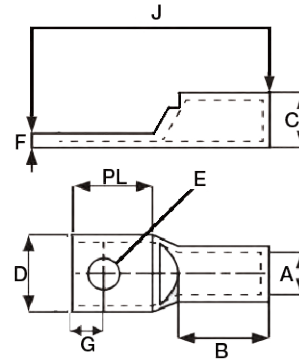
CAT. NO.	WIRE RANGE	COLOR CODE	A	C	LENGTH (L)	BOX QTY
93208	8 STR.	BLUE	.16	.30	1.38	50
93210	6 STR.	GRAY	.20	.34	1.63	50
93212	4 STR.	GREEN	.25	.44	2.00	30
93214	2 STR.	PINK	.31	.53	2.38	30
93216	1 STR.	GOLD	.35	.53	2.38	15
93218	1/0 STR.	TAN	.39	.63	2.50	20
93220	2/0 STR.	OLIVE	.44	.69	2.63	20
93222	3/0 STR.	RUBY	.48	.76	2.88	15
93224	4/0 STR.	WHITE	.55	.84	3.13	10
93226	250 MCM	RED	.59	.92	3.25	9
93228	300 MCM	BLUE	.65	1.01	3.25	9
93230	350 MCM	BROWN	.72	1.12	3.88	6
93232	400 MCM	GREEN	.76	1.19	4.88	6
93234	500 MCM	PINK	.84	1.32	5.00	6
93236	600 MCM	BLACK	.92	1.44	5.13	4
93238	750 MCM	YELLOW	1.03	1.60	5.38	4

- AL9CU Listed - for both Aluminum and Copper Conductors
- Pre-filled with Oxide Inhibitor
- Made of High-Conductivity Seamless Aluminum
- Uniform Bright Electro-Tin Plating Resists Corrosion, Reduces Contact Resistance for Maximum Conductivity
- Color Coded Die Index and Crimp Marks Printed on Barrel
- UL 486B AL9CU Listed for Applications Thru 35KV

Copper Short Barrel 1 Hole Compression Lugs



Copper Compression CONNECTORS



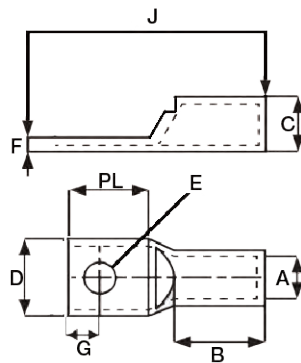
- High Conductivity Seamless Copper
- Electro-Tin Plating Resists Corrosion, Reduces Contact Resistance for Maximum Conductivity
- Single Mounting Hole
- Color Coded Die Index and Crimp Marks Printed on Barrel
- UL 486A Listed for Applications Thru 35KV

DIMENSIONS = INCHES

CAT. NO.	WIRE RANGE	STUD SIZE	COLOR CODE	A	C	J	B	D	F	E	G	PL	BOX QTY
94010	8 STR.	#10	RED	.172	.272	1.34	.44	.42	.08	.21	.29	.65	80
94012	8 STR.	1/4	RED	.172	.272	1.34	.44	.42	.08	.25	.29	.65	80
94013	8 STR.	5/16	RED	.172	.272	1.34	.44	.50	.08	.33	.29	.65	80
94014	8 STR.	3/8	RED	.172	.272	1.34	.44	.56	.08	.41	.31	.65	80
94016	6 STR.	#10	BLUE	.204	.297	1.77	.81	.42	.07	.21	.31	.69	60
94018	6 STR.	1/4	BLUE	.204	.297	1.77	.81	.42	.07	.25	.31	.69	60
94020	6 STR.	5/16	BLUE	.204	.297	1.77	.81	.49	.07	.33	.31	.69	60
94021	6 STR.	3/8	BLUE	.204	.297	1.77	.81	.60	.08	.41	.31	.69	60
94024	4 STR.	#10	GRAY	.252	.343	1.50	.71	.49	.08	.21	.36	.75	45
94026	4 STR.	1/4	GRAY	.250	.344	1.81	.81	.49	.09	.25	.36	.75	45
94028	4 STR.	5/16	GRAY	.250	.344	1.81	.81	.49	.09	.33	.36	.75	45
94030	4 STR.	3/8	GRAY	.250	.344	1.81	.81	.56	.09	.41	.36	.75	45
94031	4 STR.	1/2	GRAY	.250	.344	1.81	.81	.70	.09	.51	.36	.75	45
94034	2 STR.	1/4	BROWN	.315	.422	1.93	.88	.60	.10	.25	.37	.81	25
94036	2 STR.	5/16	BROWN	.315	.422	1.93	.88	.60	.10	.33	.37	.81	25
94038	2 STR.	3/8	BROWN	.315	.422	1.93	.88	.60	.10	.41	.37	.81	25
94039	2 STR.	1/2	BROWN	.315	.422	1.93	.88	.70	.10	.51	.37	.81	25
94042	1 STR.	1/4	GREEN	.359	.469	2.01	.88	.67	.11	.25	.37	.81	20
94044	1 STR.	5/16	GREEN	.359	.469	2.01	.88	.67	.11	.33	.37	.81	20
94046	1 STR.	3/8	GREEN	.359	.469	2.01	.88	.67	.11	.41	.37	.81	20
94047	1 STR.	1/2	GREEN	.359	.469	2.01	.88	.70	.11	.51	.37	.81	20
94050	1/0 STR.	1/4	PINK	.390	.520	2.01	.88	.74	.13	.25	.37	.81	12
94052	1/0 STR.	5/16	PINK	.390	.520	2.01	.88	.74	.13	.33	.37	.81	12
94054	1/0 STR.	3/8	PINK	.390	.520	2.01	.88	.74	.13	.41	.37	.81	12
94055	1/0 STR.	1/2	PINK	.390	.520	2.01	.88	.74	.13	.51	.37	.81	12
94058	2/0 STR.	1/4	BLACK	.441	.563	2.32	.94	.81	.12	.25	.48	1.06	10
94060	2/0 STR.	5/16	BLACK	.441	.563	2.32	.94	.81	.12	.33	.48	1.06	10
94062	2/0 STR.	3/8	BLACK	.441	.563	2.32	.94	.81	.12	.41	.48	1.06	10
94064	2/0 STR.	1/2	BLACK	.441	.563	2.32	.94	.81	.12	.51	.48	1.06	10
94066	3/0 STR.	1/4	ORANGE	.492	.622	2.52	1.00	.90	.13	.25	.48	1.06	20
94068	3/0 STR.	5/16	ORANGE	.492	.622	2.52	1.00	.90	.13	.33	.48	1.06	20
94070	3/0 STR.	3/8	ORANGE	.492	.622	2.52	1.00	.90	.13	.41	.48	1.06	20
94072	3/0 STR.	1/2	ORANGE	.492	.622	2.52	1.00	.90	.13	.51	.48	1.06	20
94074	4/0 STR.	1/4	PURPLE	.547	.689	2.52	1.00	1.00	.13	.25	.48	1.06	20
94076	4/0 STR.	5/16	PURPLE	.547	.689	2.52	1.00	1.00	.13	.33	.48	1.06	20
94078	4/0 STR.	3/8	PURPLE	.547	.689	2.52	1.00	1.00	.13	.41	.48	1.06	20
94080	4/0 STR.	1/2	PURPLE	.547	.689	2.52	1.00	1.00	.13	.51	.48	1.06	20

Copper Short Barrel 1 Hole Compression Lugs

NEW
STUD SIZES



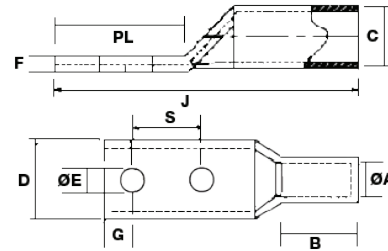
- High Conductivity Seamless Copper
- Electro-Tin Plating Resists Corrosion, Reduces Contact Resistance for Maximum Conductivity
- Single Mounting Hole
- Color Coded Die Index and Crimp Marks Printed on Barrel
- UL 488A Listed for Applications Thru 35KV

DIMENSIONS = INCHES

CAT. NO.	WIRE RANGE	STUD SIZE	COLOR CODE	A	C	J	B	D	F	E	G	PL	BOX QTY
94800	250 MCM	1/4	YELLOW	.594	.752	2.64	1.06	1.09	.15	.25	.47	1.06	15
94802	250 MCM	5/16	YELLOW	.594	.752	2.64	1.06	1.09	.15	.33	.47	1.06	15
94082	250 MCM	3/8	YELLOW	.594	.752	2.64	1.06	1.09	.15	.41	.47	1.06	15
94084	250 MCM	1/2	YELLOW	.594	.752	2.64	1.06	1.09	.15	.51	.47	1.06	15
94803	250 MCM	5/8	YELLOW	.594	.752	2.64	1.06	1.09	.15	.67	.47	1.06	15
94808	300 MCM	1/4	WHITE	.657	.815	2.64	1.06	1.19	.15	.25	.52	1.06	15
94809	300 MCM	5/16	WHITE	.657	.815	2.64	1.06	1.19	.15	.33	.52	1.06	15
94810	300 MCM	3/8	WHITE	.657	.815	2.64	1.06	1.19	.15	.41	.52	1.06	15
94086	300 MCM	1/2	WHITE	.657	.815	2.64	1.06	1.19	.15	.51	.52	1.06	15
94087	300 MCM	5/8	WHITE	.657	.815	2.64	1.06	1.19	.15	.67	.52	1.06	15
94816	350 MCM	1/4	RED	.701	.874	2.80	1.12	1.28	.17	.26	.52	1.06	10
94817	350 MCM	5/16	RED	.701	.874	2.80	1.12	1.28	.17	.33	.52	1.06	10
94818	350 MCM	3/8	RED	.701	.874	2.80	1.12	1.28	.17	.41	.52	1.06	10
94088	350 MCM	1/2	RED	.701	.874	2.80	1.12	1.28	.17	.51	.52	1.06	10
94089	350 MCM	5/8	RED	.701	.874	2.80	1.12	1.28	.17	.67	.52	1.06	10
94822	400 MCM	1/4	BLUE	.764	.949	3.08	1.18	1.39	.18	.26	.52	1.25	10
94823	400 MCM	5/16	BLUE	.764	.949	3.08	1.18	1.39	.18	.33	.52	1.25	10
94824	400 MCM	3/8	BLUE	.764	.949	3.08	1.18	1.39	.18	.41	.52	1.25	10
94090	400 MCM	1/2	BLUE	.764	.949	3.08	1.18	1.39	.18	.51	.52	1.25	10
94091	400 MCM	5/8	BLUE	.764	.949	3.08	1.18	1.39	.18	.67	.52	1.25	10
94830	500 MCM	1/4	BROWN	.835	1.06	3.31	1.38	1.54	.22	.26	.52	1.25	6
94832	500 MCM	3/8	BROWN	.835	1.06	3.31	1.38	1.54	.22	.41	.52	1.25	6
94094	500 MCM	1/2	BROWN	.835	1.06	3.31	1.38	1.54	.22	.51	.52	1.25	6
94093	500 MCM	5/8	BROWN	.835	1.06	3.31	1.38	1.54	.22	.67	.52	1.25	6
94834	500 MCM	3/4	BROWN	.835	1.06	3.31	1.38	1.54	.22	.76	.52	1.25	6
94836	500 MCM	7/8	BROWN	.835	1.06	3.31	1.38	1.54	.22	.87	.52	1.25	6
94095	600 MCM	1/2	GREEN	.925	1.189	3.66	1.38	1.72	.25	.51	.69	1.46	4
94096	600 MCM	5/8	GREEN	.925	1.189	3.66	1.38	1.72	.25	.67	.69	1.46	4
94838	600 MCM	3/4	GREEN	.925	1.189	3.66	1.38	1.72	.25	.76	.69	1.46	4
94839	600 MCM	7/8	GREEN	.925	1.189	3.66	1.38	1.72	.25	.87	.69	1.46	4
94840	750 MCM	1/2	BLACK	1.03	1.31	3.94	1.63	1.90	.27	.51	.69	1.46	4
94098	750 MCM	5/8	BLACK	1.03	1.31	3.94	1.63	1.90	.27	.67	.69	1.46	4
94841	750 MCM	3/4	BLACK	1.03	1.31	3.94	1.63	1.90	.27	.76	.69	1.46	4
94842	750 MCM	7/8	BLACK	1.03	1.31	3.94	1.63	1.90	.27	.87	.69	1.46	4
94843	1000 MCM	1/2	WHITE	1.15	1.50	5.20	1.93	2.15	.33	.51	.86	1.74	3
94844	1000 MCM	5/8	WHITE	1.15	1.50	5.20	1.93	2.15	.33	.67	.86	1.74	3
94099	1000 MCM	3/4	WHITE	1.15	1.50	5.20	1.93	2.15	.33	.76	.86	1.74	3
94845	1000 MCM	7/8	WHITE	1.15	1.50	5.20	1.93	2.15	.33	.87	.86	1.74	3

Copper Short Barrel 2 Hole Compression Lugs

NEW
STUD SIZES



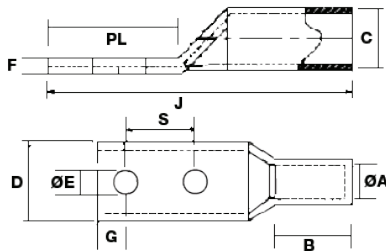
- High Conductivity Seamless Copper
- Electro-Tin Plating Resists Corrosion, Reduces Contact Resistance for Maximum Conductivity
- Single Mounting Hole
- Color Coded Die Index and Crimp Marks Printed on Barrel
- UL 488A Listed for Applications Thru 35KV

DIMENSIONS = INCHES

CAT. NO.	WIRE RANGE	STUD SIZE	HOLE SPACING	COLOR CODE	A	C	J	B	D	F	E	G	PL	S	BOX QTY
94916	8 STR.	#8	5/8	RED	.173	.272	1.82	.44	.42	.08	.16	.28	1.26	.63	50
94110	8 STR.	#10	5/8	RED	.173	.272	1.82	.44	.42	.08	.21	.28	1.26	.63	50
94918	8 STR.	#10	3/4	RED	.173	.272	1.82	.44	.42	.08	.21	.28	1.26	.75	50
94112	8 STR.	1/4	5/8	RED	.173	.272	1.82	.44	.42	.08	.25	.28	1.26	.63	50
94920	8 STR.	1/4	3/4	RED	.173	.272	1.82	.44	.42	.08	.25	.28	1.81	.75	50
94922	8 STR.	1/4	1	RED	.173	.272	1.82	.44	.42	.08	.25	.28	1.81	1.00	50
94924	8 STR.	5/16	3/4	RED	.173	.272	1.82	.44	.42	.08	.33	.28	1.81	.75	50
94114	8 STR.	3/8	1	RED	.173	.272	1.82	.44	.42	.08	.41	.28	1.81	1.00	50
94930	6 STR.	#8	5/8	BLUE	.205	.298	2.64	.71	.42	.08	.16	.28	1.26	.63	50
94934	6 STR.	#10	1/2	BLUE	.205	.298	2.64	.71	.42	.08	.21	.28	1.26	.63	50
94116	6 STR.	#10	5/8	BLUE	.205	.298	2.64	.71	.42	.08	.21	.28	1.26	.63	50
94118	6 STR.	1/4	5/8	BLUE	.205	.298	2.64	.71	.42	.08	.25	.28	1.26	.63	50
94120	6 STR.	1/4	1	BLUE	.205	.298	2.64	.71	.42	.08	.25	.28	1.81	1.00	50
94936	6 STR.	5/16	3/4	BLUE	.205	.298	2.64	.71	.42	.08	.33	.28	1.81	.75	50
94122	6 STR.	3/8	1	BLUE	.205	.298	2.64	.71	.60	.08	.41	.38	1.81	1.00	50
94124	4 STR.	1/4	5/8	GRAY	.252	.342	2.68	.75	.49	.09	.25	.38	1.26	.63	50
94126	4 STR.	1/4	1	GRAY	.252	.342	2.68	.75	.49	.09	.25	.38	1.81	1.00	50
94128	4 STR.	5/16	1	GRAY	.252	.342	2.68	.75	.49	.09	.33	.38	1.81	1.00	50
94130	4 STR.	3/8	1	GRAY	.252	.342	2.68	.75	.56	.09	.41	.38	1.81	1.00	50
94132	2 STR.	1/4	5/8	BROWN	.315	.421	2.28	.83	.60	.10	.25	.28	1.26	.63	25
94134	2 STR.	1/4	3/4	BROWN	.315	.421	2.36	.83	.60	.10	.25	.28	1.38	.75	25
94136	2 STR.	1/4	1	BROWN	.315	.421	2.80	.83	.60	.10	.25	.28	1.81	1.00	25
94138	2 STR.	5/16	3/4	BROWN	.315	.421	2.62	.83	.60	.10	.33	.38	1.61	.75	25
94940	2 STR.	5/16	1	BROWN	.315	.421	2.62	.83	.60	.10	.33	.38	1.61	.75	25
94140	2 STR.	3/8	1	BROWN	.315	.421	2.83	.83	.60	.10	.41	.38	1.81	1.00	25
94142	2 STR.	1/2	1-3/4	BROWN	.315	.421	2.83	.83	.70	.10	.51	.62	2.99	1.75	25
94144	1 STR.	1/4	5/8	GREEN	.358	.468	2.28	.83	.67	.11	.25	.28	1.26	.63	25
94952	1 STR.	1/4	3/4	GREEN	.358	.468	2.28	.83	.67	.11	.25	.28	1.26	.75	25
94954	1 STR.	1/4	1	GREEN	.358	.468	2.28	.83	.67	.11	.25	.28	1.26	1.00	25
94146	1 STR.	5/16	1	GREEN	.358	.468	2.84	.83	.67	.11	.33	.38	1.81	1.00	25
94956	1 STR.	3/8	1	GREEN	.358	.468	2.84	.83	.67	.11	.41	.38	1.81	1.00	25
94958	1 STR.	1/2	1-3/4	GREEN	.358	.468	2.84	.83	.67	.11	.51	.62	1.81	1.75	25
94960	1/0	1/4	5/8	PINK	.389	.519	2.84	.83	.74	.12	.25	.28	1.38	.63	10
94148	1/0	1/4	3/4	PINK	.389	.519	2.84	.83	.74	.12	.25	.28	1.38	.75	10
94961	1/0	1/4	1	PINK	.389	.519	2.84	.83	.74	.12	.25	.28	1.38	1.00	10
94150	1/0	5/16	7/8	PINK	.389	.519	2.64	.83	.74	.13	.33	.32	1.62	.87	10
94152	1/0	3/8	1	PINK	.389	.519	2.83	.83	.74	.13	.41	.38	1.81	1.00	10
94154	1/0	1/2	1-3/4	PINK	.389	.519	2.83	.83	.74	.13	.51	.62	2.99	1.75	10
94962	2/0	1/4	5/8	BLACK	.440	.562	2.99	.94	.81	.11	.25	.28	1.38	.75	10
94156	2/0	1/4	3/4	BLACK	.440	.562	2.99	.94	.81	.11	.25	.28	1.38	.75	10
94963	2/0	1/4	1	BLACK	.440	.562	2.99	.94	.81	.11	.25	.28	1.38	1.00	10
94158	2/0	5/16	7/8	BLACK	.440	.562	2.99	.94	.81	.11	.33	.32	1.62	.875	10
94160	2/0	3/8	1	BLACK	.440	.562	2.99	.94	.81	.11	.41	.38	1.81	1.00	10
94162	2/0	1/2	1-3/4	BLACK	.440	.562	4.17	.94	.81	.11	.51	.62	2.99	1.75	10

Copper Short Barrel 2 Hole Compression Lugs

NEW
STUD SIZES



- High Conductivity Seamless Copper
- Electro-Tin Plating Resists Corrosion, Reduces Contact Resistance for Maximum Conductivity
- Single Mounting Hole
- Color Coded Die Index and Crimp Marks Printed on Barrel
- UL 486A Listed for Applications Thru 35KV

DIMENSIONS = INCHES

CAT. NO.	WIRE RANGE	STUD SIZE	HOLE SPACING	COLOR CODE	A	C	J	B	D	F	E	G	PL	S	BOX QTY
94964	3/0	1/4	3/4	ORANGE	.492	.622	3.11	.98	.90	.12	.25	.38	1.81	.75	10
94164	3/0	5/16	1	ORANGE	.492	.622	3.11	.98	.90	.12	.33	.38	1.81	1.00	10
94166	3/0	3/8	1	ORANGE	.492	.622	3.11	.98	.90	.12	.41	.38	1.81	1.00	10
94168	3/0	1/2	1-3/4	ORANGE	.492	.622	4.29	.98	.90	.12	.51	.62	2.99	1.75	10
94965	4/0	1/4	3/4	PURPLE	.547	.688	3.11	.98	1.00	.13	.25	.31	1.81	.75	10
94966	4/0	1/4	1	PURPLE	.547	.688	3.11	.98	1.00	.13	.25	.31	1.81	1.00	10
94170	4/0	5/16	1	PURPLE	.547	.688	3.11	.98	1.00	.13	.33	.32	1.81	1.00	10
94967	4/0	3/8	3/4	PURPLE	.547	.688	3.11	.98	1.00	.13	.41	.38	1.81	.75	10
94172	4/0	3/8	1	PURPLE	.547	.688	3.11	.98	1.00	.13	.41	.38	1.81	1.00	10
94174	4/0	1/2	1-3/4	PURPLE	.547	.688	4.29	.98	1.00	.13	.51	.62	2.99	1.75	10
94968	250	1/4	3/4	YELLOW	.594	.751	2.82	1.06	1.09	.15	.25	.38	1.81	.75	10
94176	250	3/8	1	YELLOW	.594	.751	3.22	1.06	1.09	.15	.41	.38	1.81	1.00	10
94178	250	1/2	1-3/4	YELLOW	.594	.751	4.41	1.06	1.09	.15	.51	.62	2.99	1.75	10
94970	250	5/8	1-3/4	YELLOW	.594	.751	4.41	1.06	1.09	.15	.67	.62	2.99	1.75	10
94972	300	3/8	1	WHITE	.657	.814	4.41	1.06	1.19	.15	.41	.62	2.99	1.00	10
94180	300	1/2	1-3/4	WHITE	.657	.814	4.41	1.06	1.19	.15	.51	.62	2.99	1.75	10
94976	300	5/8	1-3/4	WHITE	.657	.814	4.41	1.06	1.19	.15	.67	.62	2.99	1.75	10
94978	350	1/4	3/4	RED	.700	.874	3.35	1.10	1.28	.17	.25	.38	1.81	.75	10
94182	350	3/8	1	RED	.700	.874	3.35	1.10	1.28	.17	.41	.38	1.81	1.00	10
94184	350	1/2	1-3/4	RED	.700	.874	4.53	1.10	1.28	.17	.51	.62	2.99	1.75	10
94980	350	5/8	1-3/4	RED	.700	.874	4.53	1.10	1.28	.17	.67	.62	2.99	1.75	10
94982	400	3/8	1	BLUE	.763	.948	4.69	1.18	1.39	.18	.41	.62	2.99	1.00	10
94186	400	1/2	1-3/4	BLUE	.763	.948	4.69	1.18	1.39	.18	.51	.62	2.99	1.75	10
94984	400	5/8	1-3/4	BLUE	.763	.948	4.69	1.18	1.39	.18	.67	.62	2.99	1.75	10
94986	500	1/4	3/4	BROWN	.838	1.06	3.70	1.38	1.54	.22	.25	.38	1.81	.75	6
94188	500	3/8	1	BROWN	.838	1.06	3.70	1.38	1.54	.22	.41	.38	1.81	1.00	6
94190	500	1/2	1-3/4	BROWN	.838	1.06	4.88	1.38	1.54	.22	.51	.62	2.99	1.75	6
94988	500	5/8	1-3/4	BROWN	.838	1.06	4.88	1.38	1.54	.22	.67	.62	2.99	1.75	6
94990	500	3/4	1-3/4	BROWN	.838	1.06	5.03	1.38	1.54	.22	.76	.62	2.99	1.75	6
94192	600	3/8	1-3/4	GREEN	.925	1.18	4.96	1.50	1.72	.25	.41	.62	2.99	1.75	4
94194	600	1/2	1-3/4	GREEN	.925	1.18	5.04	1.50	1.72	.25	.51	.62	2.99	1.75	4
94992	600	5/8	1-3/4	GREEN	.925	1.18	5.11	1.50	1.72	.25	.67	.62	2.99	1.75	4
94994	600	3/4	1-3/4	GREEN	.925	1.18	5.11	1.50	1.72	.25	.76	.62	2.99	1.75	4
94995	600	7/8	1-3/4	GREEN	.925	1.18	5.11	1.50	1.72	.25	.87	.62	2.99	1.75	4
94196	750	1/2	1-3/4	BLACK	1.04	1.31	5.51	1.85	1.90	.27	.51	.62	2.99	1.75	4
94996	750	5/8	1-3/4	BLACK	1.04	1.31	5.51	1.85	1.90	.27	.51	.62	2.99	1.75	4
94998	750	3/4	1-3/4	BLACK	1.04	1.31	5.51	1.85	1.90	.27	.51	.62	2.99	1.75	4
94999	750	7/8	1-3/4	BLACK	1.04	1.31	5.51	1.85	1.90	.27	.51	.62	2.99	1.75	4

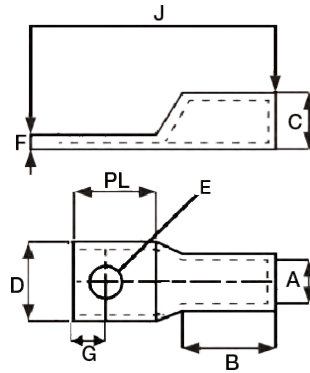
CONNECTORS

Copper Compression

A12

Copper Long Barrel 1 Hole Compression Lugs

NEW
STUD SIZES



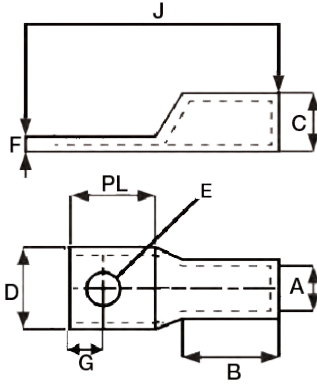
- High Conductivity Seamless Copper
- Electro-Tin Plating Resists Corrosion, Reduces Contact Resistance for Maximum Conductivity
- Single Mounting Hole
- Long Barrel Accommodates Multiple Crimps
- Color Coded Die Index and Crimp Marks Printed on Barrel
- UL 486A Listed for Applications Thru 35KV

DIMENSIONS = INCHES

CAT. NO.	WIRE RANGE	STUD SIZE	COLOR CODE	A	C	J	B	D	F	E	G	PL	BOX QTY
94852	6 STR.	#8	BLUE	.204	.297	2.01	1.12	.42	.08	.16	.29	.65	40
94213	6 STR.	#10	BLUE	.204	.297	2.01	1.12	.42	.08	.21	.29	.65	40
94214	6 STR.	1/4	BLUE	.204	.297	2.01	1.12	.42	.08	.25	.29	.65	40
94215	6 STR.	5/16	BLUE	.204	.297	2.01	1.12	.42	.08	.33	.29	.65	40
94216	6 STR.	3/8	BLUE	.204	.297	2.01	1.12	.60	.08	.41	.29	.65	40
94217	4 STR.	#10	GRAY	.251	.344	2.05	1.12	.49	.09	.21	.29	.65	30
94218	4 STR.	1/4	GRAY	.251	.344	2.05	1.12	.49	.09	.25	.29	.65	30
94219	4 STR.	5/16	GRAY	.251	.344	2.05	1.12	.56	.09	.33	.29	.65	30
94220	4 STR.	3/8	GRAY	.251	.344	2.05	1.12	.59	.09	.41	.29	.65	30
94221	2 STR.	1/4	BROWN	.315	.422	2.24	1.25	.60	.10	.25	.38	.75	15
94222	2 STR.	5/16	BROWN	.315	.422	2.24	1.25	.60	.10	.33	.38	.75	15
94223	2 STR.	3/8	BROWN	.315	.422	2.24	1.25	.60	.10	.41	.38	.75	15
94860	1 STR.	1/4	GREEN	.360	.469	2.32	1.25	.67	.11	.25	.38	.75	15
94226	1 STR.	5/16	GREEN	.360	.469	2.32	1.25	.67	.11	.33	.38	.75	15
94227	1 STR.	3/8	GREEN	.360	.469	2.32	1.25	.67	.11	.41	.38	.75	15
94866	1/0 STR.	#10	PINK	.390	.520	2.56	1.38	.74	.13	.21	.41	.81	10
94868	1/0 STR.	1/4	PINK	.390	.520	2.56	1.38	.74	.13	.25	.41	.81	10
94230	1/0 STR.	5/16	PINK	.390	.520	2.56	1.38	.74	.13	.33	.41	.81	10
94234	1/0 STR.	3/8	PINK	.390	.520	2.56	1.38	.74	.13	.41	.41	.81	10
94235	1/0 STR.	1/2	PINK	.390	.520	2.56	1.38	.74	.13	.51	.41	.81	10
94870	2/0 STR.	1/4	BLACK	.441	.563	2.64	1.50	.81	.12	.25	.48	.81	10
94238	2/0 STR.	3/8	BLACK	.441	.563	2.64	1.50	.81	.12	.41	.48	.81	10
94239	2/0 STR.	1/2	BLACK	.441	.563	2.64	1.50	.81	.12	.51	.48	.81	10
94872	3/0 STR.	1/4	ORANGE	.492	.622	3.03	1.50	.90	.13	.25	.48	1.06	20
94245	3/0 STR.	3/8	ORANGE	.492	.622	3.03	1.50	.90	.13	.41	.48	1.06	20
94246	3/0 STR.	1/2	ORANGE	.492	.622	3.03	1.50	.90	.13	.51	.48	1.06	20
94876	4/0 STR.	1/4	PURPLE	.547	.688	3.23	1.62	1.00	.13	.25	.52	1.06	15
94253	4/0 STR.	3/8	PURPLE	.547	.688	3.23	1.62	1.00	.13	.41	.52	1.06	15
94254	4/0 STR.	1/2	PURPLE	.547	.688	3.23	1.62	1.00	.13	.51	.52	1.06	15

Copper Long Barrel 1 Hole Compression Lugs

NEW
STUD SIZES



- High Conductivity Seamless Copper
- Electro-Tin Plating Resists Corrosion, Reduces Contact Resistance for Maximum Conductivity
- Single Mounting Hole
- Long Barrel Accommodates Multiple Crimps
- Color Coded Die Index and Crimp Marks Printed on Barrel
- UL 486A Listed for Applications Thru 35KV

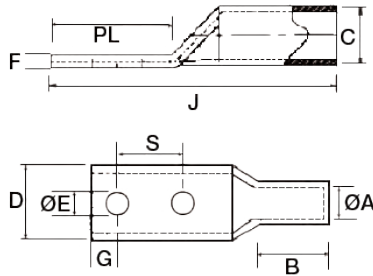
DIMENSIONS = INCHES

CAT. NO.	WIRE RANGE	STUD SIZE	COLOR CODE	A	C	J	B	D	F	E	G	PL	BOX QTY
94880	250 MCM	1/4	YELLOW	.594	.751	3.23	1.62	1.09	.15	.25	.52	1.06	10
94257	250 MCM	3/8	YELLOW	.594	.751	3.23	1.62	1.09	.15	.41	.52	1.06	10
94258	250 MCM	1/2	YELLOW	.594	.751	3.23	1.62	1.09	.15	.51	.52	1.06	10
94882	250 MCM	5/8	YELLOW	.594	.751	3.23	1.62	1.09	.15	.67	.52	1.06	10
94886	300 MCM	1/4	WHITE	.658	.813	3.58	2.00	1.19	.15	.25	.52	1.06	10
94888	300 MCM	5/16	WHITE	.658	.813	3.58	2.00	1.19	.15	.33	.52	1.06	10
94890	300 MCM	3/8	WHITE	.658	.813	3.58	2.00	1.19	.15	.41	.52	1.06	10
94262	300 MCM	1/2	WHITE	.658	.813	3.58	2.00	1.19	.15	.51	.52	1.06	10
94892	350 MCM	3/8	RED	.700	.874	3.70	2.00	1.28	.17	.41	.41	1.06	8
94266	350 MCM	1/2	RED	.700	.874	3.70	2.00	1.28	.17	.51	.51	1.06	8
94267	350 MCM	5/8	RED	.700	.874	3.70	2.00	1.28	.17	.67	.67	1.06	8
94896	400 MCM	3/8	BLUE	.764	.949	4.02	2.00	1.39	.18	.41	.52	1.35	6
94270	400 MCM	1/2	BLUE	.764	.949	4.02	2.00	1.39	.18	.51	.52	1.35	6
94274	400 MCM	5/8	BLUE	.764	.949	4.02	2.00	1.39	.18	.67	.52	1.35	6
94278	500 MCM	1/2	BROWN	.835	1.06	4.41	2.25	1.54	.22	.51	.52	1.35	8
94282	500 MCM	5/8	BROWN	.835	1.06	4.41	2.25	1.54	.22	.67	.52	1.35	8
94900	500 MCM	3/4	BROWN	.835	1.06	4.41	2.25	1.54	.22	.76	.52	1.35	8
94902	600 MCM	1/2	GREEN	.925	1.19	4.80	2.22	1.72	.25	.67	.69	1.45	6
94286	600 MCM	5/8	GREEN	.925	1.19	4.80	2.50	1.72	.25	.67	.69	1.45	6
94904	600 MCM	3/4	GREEN	.925	1.19	4.80	2.50	1.72	.25	.67	.69	1.45	6
94907	750 MCM	1/2	BLACK	1.03	1.31	5.24	2.88	1.90	.27	.67	.69	1.45	4
94290	750 MCM	5/8	BLACK	1.03	1.31	5.24	2.88	1.90	.27	.67	.69	1.45	4
94908	750 MCM	3/4	BLACK	1.03	1.31	5.24	2.88	1.90	.27	.67	.69	1.45	4
94910	1000 MCM	1/2	WHITE	1.15	1.50	5.65	2.87	2.15	.33	.67	.86	1.45	3
94292	1000 MCM	5/8	WHITE	1.15	1.50	5.65	2.87	2.15	.33	.67	.86	1.45	3
94912	1000 MCM	3/4	WHITE	1.15	1.50	5.65	2.87	2.15	.33	.67	.86	1.45	3

CONNECTORS
Copper Compression

Copper Long Barrel 2 Hole Compression Lugs

NEW
STUD SIZES



- High Conductivity Seamless Copper
- Electro-Tin Plating Resists Corrosion, Reduces Contact Resistance for Maximum Conductivity
- Dual Mounting Holes
- Long Barrel Accommodates Multiple Crimps
- Color Coded Die Index and Crimp Marks Printed on Barrel
- UL 486A Listed for Applications Thru 35KV

DIMENSIONS = INCHES

CAT. NO.	WIRE RANGE	STUD SIZE	HOLE SPACING	COLOR	A	C	J	B	D	F	E	G	PL	S	BOX QTY
94545	8 STR.	#8	3/4	RED	.172	.272	2.32	.75	.42	.08	.16	.28	1.25	.75	45
94310	8 STR.	#10	5/8	RED	.172	.272	2.32	.75	.42	.08	.21	.28	1.25	.63	45
94546	8 STR.	#10	3/4	RED	.172	.272	2.32	.75	.42	.08	.21	.28	1.25	.75	45
94312	8 STR.	1/4	5/8	RED	.172	.272	2.32	.75	.42	.08	.25	.28	1.25	.63	45
94547	8 STR.	1/4	3/4	RED	.172	.272	2.32	.75	.42	.08	.25	.28	1.25	.75	45
94548	8 STR.	1/4	1	RED	.172	.272	2.32	.75	.42	.08	.25	.28	1.25	1.00	45
94549	8 STR.	3/8	3/4	RED	.172	.272	2.32	.75	.56	.08	.41	.28	1.25	.75	45
94314	8 STR.	3/8	1	RED	.172	.272	2.32	.75	.56	.08	.41	.28	1.25	1.00	45
94553	6 STR.	#10	5/8	BLUE	.205	.295	2.68	1.12	.42	.08	.21	.32	1.25	.63	35
94315	6 STR.	1/4	1/2	BLUE	.205	.295	2.68	1.12	.42	.08	.25	.32	1.25	.50	35
94316	6 STR.	1/4	5/8	BLUE	.205	.295	2.68	1.12	.42	.08	.25	.32	1.25	.63	35
94317	6 STR.	1/4	3/4	BLUE	.205	.295	2.68	1.12	.42	.08	.25	.32	1.25	.75	35
94554	6 STR.	1/4	1	BLUE	.205	.295	2.68	1.12	.42	.08	.25	.32	1.25	1.00	35
94555	6 STR.	5/16	1	BLUE	.205	.295	2.68	1.12	.42	.08	.33	.32	1.25	1.00	35
94556	6 STR.	3/8	3/4	BLUE	.205	.295	2.68	1.12	.42	.08	.41	.41	1.25	.75	35
94557	6 STR.	3/8	7/8	BLUE	.205	.295	2.68	1.12	.42	.08	.41	.41	1.25	.87	35
94319	6 STR.	3/8	1	BLUE	.205	.295	2.68	1.12	.42	.08	.41	.41	1.81	1.00	35
94320	6 STR.	1/2	1-3/4	BLUE	.205	.295	2.68	1.12	.42	.08	.51	.41	1.81	1.75	35
94323	4 STR.	1/4	3/4	GRAY	.250	.344	2.76	1.12	.49	.09	.25	.32	1.25	.75	25
94324	4 STR.	1/4	5/8	GRAY	.250	.344	2.76	1.12	.49	.09	.25	.32	1.25	.63	25
94559	4 STR.	1/4	1	GRAY	.250	.344	2.76	1.12	.49	.09	.25	.32	1.25	1.00	25
94325	4 STR.	5/16	1	GRAY	.250	.344	2.76	1.12	.49	.09	.33	.32	1.25	1.00	30
94327	4 STR.	3/8	1	GRAY	.250	.344	2.76	1.12	.56	.09	.41	.41	1.80	1.00	30
94326	4 STR.	1/2	1-3/4	GRAY	.250	.344	2.76	1.12	.70	.09	.51	.55	2.99	1.75	30
94328	2 STR.	1/4	5/8	BROWN	.315	.422	3.27	1.25	.60	.10	.25	.32	1.62	.63	30
94329	2 STR.	1/4	3/4	BROWN	.315	.422	3.27	1.25	.60	.10	.25	.32	1.62	.75	30
94330	2 STR.	5/16	3/4	BROWN	.315	.422	3.27	1.25	.60	.10	.33	.32	1.62	.75	30
94332	2 STR.	5/16	7/8	BROWN	.315	.422	3.27	1.25	.60	.10	.33	.32	1.62	.87	20
94333	2 STR.	3/8	1	BROWN	.315	.422	3.27	1.25	.60	.10	.41	.41	1.62	1.00	20
94334	2 STR.	1/2	1-3/4	BROWN	.315	.422	3.27	1.25	.70	.10	.51	.62	2.99	1.75	20
94338	1 STR.	1/4	5/8	GREEN	.360	.469	2.87	1.25	.67	.11	.25	.28	1.25	.63	15
94339	1 STR.	1/4	3/4	GREEN	.360	.469	3.27	1.25	.67	.11	.25	.28	1.25	.75	15
94340	1 STR.	5/16	7/8	GREEN	.360	.469	3.27	1.25	.67	.11	.33	.32	1.62	.87	30
94341	1 STR.	3/8	7/8	GREEN	.360	.469	4.65	1.25	.67	.11	.41	.41	1.62	.87	30
94343	1 STR.	3/8	1	GREEN	.360	.469	4.65	1.25	.67	.11	.41	.41	1.81	1.00	30
94342	1 STR.	1/2	1-3/4	GREEN	.360	.469	4.65	1.25	.70	.11	.51	.62	2.99	1.75	30
94345	1/0 STR.	1/4	5/8	PINK	.390	.520	3.39	1.38	.74	.13	.25	.28	1.25	.63	25
94558	1/0 STR.	1/4	3/4	PINK	.390	.520	3.39	1.38	.74	.13	.25	.28	1.25	.75	25
94346	1/0 STR.	5/16	7/8	PINK	.390	.520	3.39	1.38	.74	.13	.33	.32	1.61	.87	25
94348	1/0 STR.	3/8	1	PINK	.390	.520	3.58	1.38	.74	.13	.41	.38	1.81	1.00	25
94560	1/0 STR.	3/8	1-3/4	PINK	.390	.520	3.58	1.38	.74	.13	.41	.38	1.81	1.75	25
94350	1/0 STR.	1/2	1-3/4	PINK	.390	.520	4.76	1.38	.74	.13	.51	.62	2.99	1.75	25
94352	2/0 STR.	1/4	5/8	BLACK	.441	.563	3.86	1.50	.81	.12	.25	.28	1.25	.63	20
94353	2/0 STR.	1/4	3/4	BLACK	.441	.563	3.86	1.50	.81	.12	.25	.28	1.25	.75	20
94562	2/0 STR.	5/16	1	BLACK	.441	.563	3.86	1.50	.81	.12	.33	.28	1.25	1.00	20
94563	2/0 STR.	5/16	1-3/4	BLACK	.441	.563	3.86	1.50	.81	.12	.33	.28	1.25	1.75	20
94354	2/0 STR.	3/8	1	BLACK	.441	.563	3.86	1.50	.81	.12	.41	.38	1.81	1.00	20
94356	2/0 STR.	1/2	1-3/4	BLACK	.441	.563	5.04	1.50	.81	.12	.51	.62	2.99	1.75	20
94358	3/0 STR.	1/4	3/4	ORANGE	.492	.622	3.98	1.50	.90	.13	.25	.28	1.25	.75	15
94359	3/0 STR.	5/16	1	ORANGE	.492	.622	3.98	1.50	.90	.13	.33	.32	1.62	1.00	15
94360	3/0 STR.	3/8	1	ORANGE	.492	.622	3.98	1.50	.90	.13	.41	.38	1.81	1.00	15
94361	3/0 STR.	3/8	1-3/4	ORANGE	.492	.622	5.16	1.50	.90	.13	.41	.38	1.81	1.75	20
94362	3/0 STR.	1/2	1-3/4	ORANGE	.492	.622	5.16	1.50	.90	.13	.51	.62	2.99	1.75	20

CONNECTORS

Copper Compression

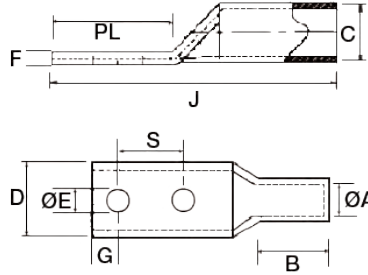
A15

Copper Long Barrel 2 Hole Compression Lugs

NEW
STUD SIZES



- High Conductivity Seamless Copper
- Electro-Tin Plating Resists Corrosion, TReduces Contact Resistance for Maximum Conductivity
- Dual Mounting Holes
- Long Barrel Accommodates Multiple Crimps
- Color Coded Die Index and Crimp Marks Printed on Barrel
- UL 486A Listed for Applications Thru 35KV



DIMENSIONS = INCHES

CAT. NO.	WIRE RANGE	STUD SIZE	HOLE SPACING	COLOR	A	C	J	B	D	F	E	G	PL	S	BOX QTY
94364	4/0 STR.	1/4	3/4	PURPLE	.547	.688	4.09	1.62	1.00	.13	.25	.28	1.25	.75	12
94565	4/0 STR.	5/16	3/4	PURPLE	.547	.688	4.09	1.62	1.00	.13	.33	.28	1.25	.75	12
94566	4/0 STR.	5/16	1	PURPLE	.547	.688	4.09	1.62	1.00	.13	.33	.28	1.25	1.00	12
94366	4/0 STR.	3/8	1	PURPLE	.547	.688	3.54	1.62	1.00	.13	.41	.38	1.81	1.00	12
94367	4/0 STR.	3/8	1-3/4	PURPLE	.547	.688	5.28	1.62	1.00	.13	.41	.38	1.81	1.75	20
94368	4/0 STR.	1/2	1-3/4	PURPLE	.547	.688	5.28	1.62	1.00	.13	.51	.62	2.99	1.75	20
94372	250 MCM	3/8	1	YELLOW	.594	.750	4.17	1.62	1.09	.15	.41	.38	1.81	1.00	12
94374	250 MCM	1/2	1-3/4	YELLOW	.594	.750	5.35	1.62	1.09	.15	.51	.62	2.99	1.75	15
94570	250 MCM	5/8	1-3/4	YELLOW	.594	.750	5.78	1.62	1.09	.15	.67	.62	2.99	1.75	12
94377	300 MCM	3/8	1	WHITE	.658	.813	5.79	2.00	1.19	.15	.41	.38	1.81	1.00	12
94378	300 MCM	1/2	1-3/4	WHITE	.658	.813	5.79	2.00	1.19	.15	.51	.62	2.99	1.75	12
94572	300 MCM	5/8	1-3/4	WHITE	.658	.813	5.79	2.00	1.19	.15	.67	.62	2.99	1.75	12
94575	350 MCM	1/4	3/4	RED	.700	.875	5.83	2.00	1.28	.17	.25	.38	1.81	.75	10
94381	350 MCM	3/8	1	RED	.700	.875	5.83	2.00	1.28	.17	.41	.38	1.81	1.00	10
94382	350 MCM	1/2	1-3/4	RED	.700	.875	5.83	2.00	1.28	.17	.51	.62	2.99	1.75	10
94576	350 MCM	5/8	1-3/4	RED	.700	.875	5.83	2.00	1.28	.17	.67	.62	2.99	1.75	10
94385	400 MCM	3/8	1	BLUE	.764	.949	5.94	2.00	1.39	.18	.41	.38	1.81	1.00	10
94386	400 MCM	1/2	1-3/4	BLUE	.764	.949	5.94	2.00	1.39	.18	.51	.62	2.99	1.75	10
94579	400 MCM	5/8	1-3/4	BLUE	.764	.949	5.94	2.00	1.39	.18	.67	.62	2.99	1.75	10
94582	500 MCM	1/4	3/4	BROWN	.835	1.063	6.22	2.25	1.54	.22	.25	.38	1.81	.75	8
94389	500 MCM	3/8	1	BROWN	.835	1.063	6.22	2.25	1.54	.22	.41	.38	1.81	1.00	8
94390	500 MCM	1/2	1-3/4	BROWN	.835	1.063	6.22	2.25	1.54	.22	.51	.62	2.99	1.75	8
94583	500 MCM	5/8	1-3/4	BROWN	.835	1.063	6.22	2.25	1.54	.22	.67	.62	2.99	1.75	8
94584	500 MCM	3/4	1-3/4	BROWN	.835	1.063	6.22	2.25	1.54	.22	.76	.62	2.99	1.75	8
94393	600 MCM	3/8	1	GREEN	.925	1.188	6.57	2.50	1.72	.25	.41	.38	1.81	1.00	6
94394	600 MCM	1/2	1-3/4	GREEN	.925	1.188	6.57	2.50	1.72	.25	.51	.62	2.99	1.75	6
94585	600 MCM	5/8	1-3/4	GREEN	.925	1.188	6.57	2.50	1.72	.25	.67	.62	2.99	1.75	6
94586	600 MCM	3/4	1-3/4	GREEN	.925	1.188	6.57	2.50	1.72	.25	.76	.62	2.99	1.75	6
94397	750 MCM	3/8	1	BLACK	1.03	1.31	6.93	2.88	1.90	.27	.41	.38	1.81	1.00	4
94398	750 MCM	1/2	1-3/4	BLACK	1.03	1.31	6.93	2.88	1.90	.27	.51	.62	2.99	1.75	4
94590	750 MCM	5/8	1-3/4	BLACK	1.03	1.31	6.93	2.88	1.90	.27	.67	.62	2.99	1.75	4
94591	750 MCM	3/4	1-3/4	BLACK	1.03	1.31	6.93	2.88	1.90	.27	.76	.62	2.99	1.75	4
94592	1000 MCM	3/8	1	WHITE	1.15	1.50	7.125	3.16	2.16	.34	.41	.38	3.06	1	1
94399	1000 MCM	1/2	1-3/4	WHITE	1.15	1.50	7.125	3.16	2.16	.34	.51	.62	3.06	1.75	1
94593	1000 MCM	5/8	1-3/4	WHITE	1.15	1.50	7.125	3.16	2.16	.34	.67	.62	3.06	1.75	1
94594	1000 MCM	3/4	1-3/4	WHITE	1.15	1.50	7.125	3.16	2.16	.34	.76	.62	3.06	1.75	1
94595	1000 MCM	7/8	1-3/4	WHITE	1.15	1.50	7.125	3.16	2.16	.34	.87	.62	3.06	1.75	1
94596	1000 MCM	1	1-3/4	WHITE	1.15	1.50	7.125	3.16	2.16	.34	1.05	.62	3.06	1.75	1



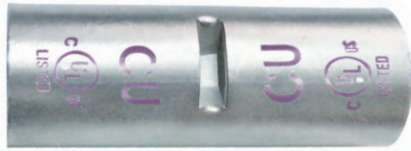
CONNECTORS

Copper Compression

A16



Copper Short Barrel Compression Splices



- High Conductivity Seamless Copper
- Electro-Tin Plating Resists Corrosion, Reduces Contact Resistance for Maximum Conductivity
- Beveled Entry for Easy Insertion
- Color Coded Die Index and Crimp Marks Printed on Barrel
- UL 486A Listed for Applications Thru 35KV

DIMENSIONS = INCHES



CAT. NO.	WIRE RANGE	COLOR CODE	A	C	LENGTH	BOX QTY
94410	8 STR.	RED	.172	.272	1.06	80
94412	6 STR.	BLUE	.203	.297	1.73	60
94414	4 STR.	GRAY	.250	.344	1.73	45
94416	2 STR.	BROWN	.315	.422	1.85	25
94418	1 STR.	GREEN	.360	.469	1.85	20
94420	1/0 STR.	PINK	.390	.520	1.85	15
94422	2/0 STR.	BLACK	.441	.563	2.01	10
94424	3/0 STR.	ORANGE	.492	.622	2.13	20
94426	4/0 STR.	PURPLE	.547	.688	2.13	20
94428	250 MCM	YELLOW	.594	.750	2.24	20
94430	300 MCM	WHITE	.658	.813	2.24	18
94432	350 MCM	RED	.700	.875	2.36	15
94434	400 MCM	BLUE	.764	.949	2.52	10
94436	500 MCM	BROWN	.835	1.063	2.87	6
94438	600 MCM	GREEN	.925	1.188	2.87	4
94440	750 MCM	BLACK	1.03	1.31	3.39	3

Copper Long Barrel Compression Splices



- High Conductivity Seamless Copper
- Electro-Tin Plating Resists Corrosion, Reduces Contact Resistance for Maximum Conductivity
- Beveled Entry for Easy Insertion
- Color Coded Die Index and Crimp Marks Printed on Barrel
- UL 486A Listed for Applications Thru 35KV

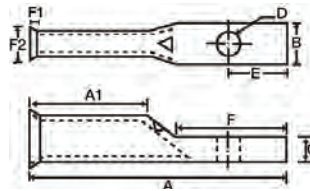
DIMENSIONS = INCHES



CAT. NO.	WIRE RANGE	COLOR CODE	A	C	LENGTH	BOX QTY
94510	8 STR.	RED	.172	.272	2.01	60
94512	6 STR.	BLUE	.203	.297	2.36	40
94514	4 STR.	GRAY	.250	.344	2.36	25
94516	2 STR.	BROWN	.315	.422	2.60	18
94518	1 STR.	GREEN	.360	.469	2.87	15
94520	1/0 STR.	PINK	.390	.520	2.87	10
94522	2/0 STR.	BLACK	.441	.563	3.11	20
94524	3/0 STR.	ORANGE	.492	.622	3.11	16
94526	4/0 STR.	PURPLE	.547	.688	3.39	12
94528	250 MCM	YELLOW	.594	.750	3.39	12
94530	300 MCM	WHITE	.658	.813	4.13	9
94532	350 MCM	RED	.700	.875	4.13	6
94534	400 MCM	BLUE	.764	.949	4.37	6
94536	500 MCM	BROWN	.835	1.063	4.61	6
94538	600 MCM	GREEN	.925	1.188	5.35	4
94540	750 MCM	BLACK	1.03	1.31	5.87	4
94542	1000 MCM	WHITE	1.15	1.50	7.00	1

Copper Flex Cable Short Barrel 1 Hole Compression Lugs

- High Conductivity Seamless Copper
- Electro-Tin Plating Resists Corrosion, Reduces Contact Resistance for Maximum Conductivity
- Flared/Belled Entry for Easy Insertion of Fine Strand Flexible Cable - Class G, H, I, K(Battery), M(Welding), DLD
- Color Coded Die Index and Crimp Marks Printed on Barrel
- UL 486A Listed for Applications Thru 35KV

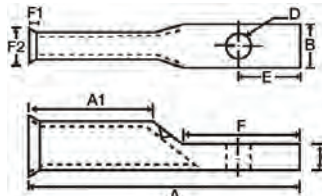


DIMENSIONS = INCHES

CAT. NO.	WIRE RANGE	STUD SIZE	COLOR CODE	COMM	ASTM CLASS	WELDING CLASS H	WELDING CLASS M	DLO	A	AI	B	C	D	E	F	F1	F2	BOX QTY
94602	8	#10	RED	8	10	10	-	1.20	.44	.42	.08	.21	.28	.59	.12	.32	50	
94606	6	1/4	BLUE	6	8	8	(61)	1.50	.71	.42	.08	.25	.30	.67	.16	.34	50	
94609	4	1/4	GRAY	4	6	6	(105)	1.50	.71	.49	.08	.25	.31	.67	.16	.42	50	
94610	4	5/16	GRAY	4	6	6	(105)	1.50	.71	.49	.08	.33	.31	.67	.16	.42	50	
94614	2	5/16	BROWN	2	4	4	(125)	1.80	.83	.60	.10	.33	.37	.81	.18	.49	25	
94618	1	5/16	GREEN	1	2	2	(150)	1.83	.83	.67	.11	.33	.37	.81	.18	.53	25	
94622	1/0	3/8	PINK	1/0	1	1	(225)	1.83	.83	.74	.13	.41	.37	.81	.18	.56	10	
94626	2/0	1/2	BLACK	2/0	1/0	1/0	1/0(275)	2.24	.94	.81	.12	.51	.47	1.06	.24	.64	10	
94630	3/0	1/2	ORANGE	3/0	2/0	-	2/0(325)	2.36	.98	.90	.13	.51	.47	1.06	.24	.72	10	
94634	4/0	1/2	PURPLE	4/0	3/0	2/0	3/0(450)	2.36	.98	1.00	.13	.51	.47	1.06	.26	.77	10	
94636	250	1/2	YELLOW	250	-	3/0	4/0(550)	2.48	1.06	1.09	.15	.51	.47	1.06	.26	.84	10	
94637	300	1/2	WHITE	300	4/0	4/0	262.6	2.49	1.06	1.19	.15	.51	.52	1.06	.31	.94	10	
94638	300	5/8	WHITE	300	4/0	4/0	262.6	2.80	1.06	1.19	.15	.67	.52	1.38	.31	.94	10	
94639	350	1/2	RED	350	250	250	313.1	2.61	1.10	1.28	.17	.51	.52	1.06	.33	1.02	10	
94640	350	5/8	RED	350	250	250	313.1	2.91	1.10	1.28	.16	.67	.52	1.38	.33	1.02	10	
94641	400	1/2	BLUE	400	300	300	350	3.08	1.18	1.39	.18	.51	.52	1.38	.33	1.08	10	
94642	400	5/8	BLUE	400	300	300	350	3.08	1.18	1.39	.18	.67	.52	1.38	.33	1.08	10	
94643	500	1/2	BROWN	500	350	350	373.3	3.28	1.38	1.54	.22	.51	.52	1.38	.35	1.20	10	
94644	500	5/8	BROWN	500	350	350	373.3	3.28	1.38	1.54	.22	.67	.52	1.38	.35	1.20	10	
94646	600	5/8	GREEN	600	400	400	444.4	3.50	1.50	1.72	.25	.67	.69	1.46	.39	1.34	6	
94647	750	5/8	BLACK	750	600	500	-	4.37	1.85	1.90	.27	.67	.69	1.85	.43	1.47	3	

Copper Flex Cable Long Barrel 1 Hole Compression Lugs

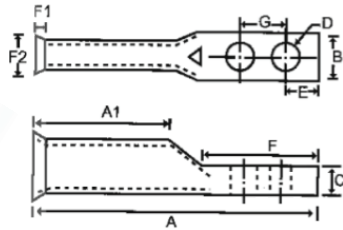
- High Conductivity Seamless Copper
- Electro-Tin Plating Resists Corrosion, Reduces Contact Resistance for Maximum Conductivity
- Flared/Belled Entry for Easy Insertion of Fine Strand Flexible Cable - Class G, H, I, K(Battery), M(Welding), DLD
- Color Coded Die Index and Crimp Marks Printed on Barrel
- UL 486A Listed for Applications Thru 35KV



DIMENSIONS = INCHES

CAT. NO.	WIRE RANGE	STUD SIZE	COLOR CODE	COMM	ASTM CLASS	WELDING CLASS H	WELDING CLASS M	DLO	A	AI	B	C	D	E	F	F1	F2	BOX QTY
94650	8	1/4	RED	8	10	10	-	1.52	.81	.42	.08	.25	.28	.59	.12	.32	50	
94652	6	#10	BLUE	6	8	8	(61)	1.77	.98	.42	.08	.21	.30	.67	.16	.34	50	
94653	6	1/4	BLUE	6	8	8	(61)	1.77	.98	.42	.08	.25	.30	.67	.16	.34	50	
94656	4	10	GRAY	4	6	6	(105)	1.77	.98	.49	.09	.21	.31	.67	.16	.42	50	
94657	4	1/4	GRAY	4	6	6	(105)	1.77	.98	.49	.09	.25	.31	.67	.16	.42	50	
94659	4	5/16	GRAY	4	6	6	(105)	1.77	.98	.49	.09	.33	.31	.67	.16	.42	50	
94660	2	#10	BROWN	2	4	4	(125)	2.07	1.10	.60	.10	.21	.37	.81	.18	.49	25	
94661	2	5/16	BROWN	2	4	4	(125)	2.07	1.10	.60	.10	.33	.37	.81	.18	.49	25	
94662	1	#10	GREEN	1	2	2	(150)	2.11	1.10	.67	.11	.21	.37	.81	.18	.53	25	
94663	1	5/16	GREEN	1	2	2	(150)	2.11	1.10	.67	.11	.33	.37	.81	.18	.53	25	
94664	1/0	#10	PINK	1/0	1	1	(225)	2.21	1.20	.74	.13	.21	.37	1.06	.18	.56	10	
94649	1/0	1/4	PINK	1/0	1	1	(225)	2.21	1.20	.74	.13	.25	.37	1.06	.18	.56	10	
94665	1/0	5/16	PINK	1/0	1	1	(225)	2.21	1.20	.74	.13	.33	.37	1.06	.18	.56	10	
94666	1/0	3/8	PINK	1/0	1	1	(225)	2.21	1.20	.74	.13	.41	.37	1.06	.18	.56	10	
94667	1/0	1/2	PINK	1/0	1	1	(225)	2.50	1.20	.74	.13	.51	.47	1.06	.18	.56	10	
94651	2/0	1/4	BLACK	2/0	1/0	1/0	1/0(275)	2.68	1.38	.81	.12	.25	.47	1.06	.18	.64	10	
94668	2/0	3/8	BLACK	2/0	1/0	1/0	1/0(275)	2.68	1.38	.81	.12	.41	.47	1.06	.24	.64	10	
94669	2/0	1/2	BLACK	2/0	1/0	1/0	1/0(275)	2.68	1.38	.81	.12	.51	.47	1.06	.24	.64	10	
94670	3/0	3/8	ORANGE	3/0	2/0	-	2/0(325)	2.80	1.38	.90	.13	.41	.47	1.06	.24	.72	10	
94671	3/0	1/2	ORANGE	3/0	2/0	-	2/0(325)	2.80	1.38	.90	.13	.51	.47	1.06	.24	.72	10	
94673	4/0	3/8	PURPLE	4/0	3/0	2/0	3/0(450)	2.80	1.42	1.00	.13	.51	.52	1.06	.26	.77	10	
94674	4/0	1/2	PURPLE	4/0	3/0	2/0	3/0(450)	2.80	1.42	1.00	.13	.51	.52	1.06	.26	.77	10	
94676	250	1/2	YELLOW	250	-	3/0	4/0(550)	3.03	1.61	1.09	.15	.51	.52	1.06	.26	.84	10	
94677	300	1/2	WHITE	300	4/0	4/0	262.6	3.39	1.97	1.19	.15	.51	.52	1.06	.31	.94	10	
94678	350	1/2	RED	350	250	250	313.1	3.46	1.97	1.28	.17	.51	.52	1.06	.33	1.02	10	
94679	350	5/8	RED	350	250	250	313.1	3.46	1.97	1.28	.17	.67	.51	1.06	.33	1.02	10	
94680	400	1/2	BLUE	400	300	300	350	3.86	1.97	1.39	.18	.51	.51	1.38	.33	1.08	10	
94681	400	5/8	BLUE	400	300	300	350	3.86	1.97	1.39	.18	.67	.51	1.38	.33	1.08	10	
94683	500	5/8	BROWN	500	350	350	373.3	4.13	2.24	1.54	.22	.67	.51	1.38	.35	1.20	10	
94684	600	5/8	GREEN	600	400	400	444.4	4.25	2.24	1.72	.25	.67	.69	1.46	.39	1.34	6	
94685	750	5/8	BLACK	750	600	500	-	5.16	2.64	1.90	.27	.67	.69	1.85	.43	1.47	3	

Copper Flex Cable Long Barrel 2 Hole Compression Lugs



- High Conductivity Seamless Copper
- Electro-Tin Plating Resists Corrosion, Reduces Contact Resistance for Maximum Conductivity
- Flared/Belled Entry for Easy Insertion of Fine Strand Flexible Cable - Class G, H, I, K(Battery), M(Welding), DLO
- Color Coded Die Index and Crimp Marks Printed on Barrel
- UL 486A Listed for Applications Thru 35KV

DIMENSIONS = INCHES

CAT. NO.	WIRE RANGE	STUD SIZE	HOLE SPACE	COLOR CODE	COMM	ASTM CLASS	WELDING CLASS H	WELDING CLASS M	DLO	A	AI	B	C	D	E	F	G	F1	F2	BOX QTY
94702	8	1/4	5/8	RED	8	10	10	-	2.19	.81	.42	.08	.25	.28	1.26	.63	.12	.32	50	
94703	6	1/4	5/8	BLUE	6	8	8	(61)	2.36	.98	.42	.08	.25	.28	1.26	.63	.16	.34	50	
94705	6	1/4	3/4	BLUE	6	8	8	(61)	2.80	.98	.42	.08	.25	.28	1.38	.59	.16	.34	50	
94706	6	3/8	1	BLUE	6	8	8	(61)	3.24	.98	.42	.08	.41	.38	1.81	1.00	.16	.34	50	
94707	6	1/2	1-3/4	BLUE	6	8	8	(61)	4.42	.98	.87	.12	.51	.62	3.00	1.75	.16	.34	50	
94708	4	1/4	5/8	GRAY	4	6	6	(105)	2.36	.98	.49	.09	.25	.28	1.26	.63	.16	.42	50	
94709	4	1/4	3/4	GRAY	4	6	6	(105)	2.88	.98	.49	.09	.25	.28	1.38	.75	.16	.42	50	
94710	4	3/8	1	GRAY	4	6	6	(105)	3.32	.98	.42	.09	.41	.38	1.81	1.00	.16	.42	50	
94711	4	1/2	1-3/4	GRAY	4	6	6	(105)	4.09	.98	.87	.12	.51	.62	2.99	1.75	.16	.42	50	
94712	2	1/4	5/8	BROWN	2	4	4	(125)	2.52	1.10	.60	.10	.25	.28	1.26	.63	.18	.49	25	
94713	2	1/4	3/4	BROWN	2	4	4	(125)	2.64	1.10	.60	.10	.25	.28	1.38	.75	.18	.49	25	
94716	2	3/8	1	BROWN	2	4	4	(125)	3.46	1.10	.60	.10	.41	.38	1.81	1.00	.18	.49	25	
94717	2	1/2	1-3/4	BROWN	2	4	4	(125)	4.25	1.10	.81	.10	.51	.62	2.99	1.75	.18	.49	25	
94718	1	1/4	5/8	GREEN	1	2	2	(150)	2.56	1.10	.67	.11	.25	.28	1.26	.63	.18	.53	25	
94719	1	1/4	3/4	GREEN	1	2	2	(150)	3.00	1.10	.67	.11	.25	.28	1.38	.75	.18	.53	25	
94721	1	3/8	1	GREEN	1	2	2	(150)	3.46	1.10	.67	.11	.41	.38	1.81	1.00	.18	.53	25	
94722	1	1/2	1-3/4	GREEN	1	2	2	(150)	4.29	1.10	.75	.10	.51	.62	2.99	1.75	.18	.53	25	
94725	1/0	1/2	1-3/4	PINK	1/0	1	1	(225)	4.63	1.20	.74	.12	.51	.62	2.99	1.75	.18	.56	10	
94726	2/0	1/4	3/4	BLACK	2/0	1/0	1/0	1/0(275)	2.99	1.38	.81	.12	.25	.28	1.38	.75	.24	.64	10	
94727	2/0	3/8	1	BLACK	2/0	1/0	1/0	1/0(275)	3.43	1.38	.81	.12	.41	.38	1.81	1.00	.24	.64	10	
94728	2/0	1/2	1-3/4	BLACK	2/0	1/0	1/0	1/0(275)	4.61	1.38	.81	.12	.51	.62	2.99	1.75	.24	.64	10	
94730	3/0	3/8	1	ORANGE	3/0	2/0	-	2/0(325)	3.50	1.38	.90	.13	.41	.38	1.81	1.00	.24	.72	10	
94732	3/0	1/2	1-3/4	ORANGE	3/0	2/0	-	2/0(325)	4.65	1.38	.90	.13	.51	.62	2.99	1.75	.24	.72	10	
94733	4/0	3/8	1	PURPLE	4/0	3/0	2/0	3/0(450)	3.54	1.42	1.00	.13	.41	.38	1.81	1.00	.26	.77	10	
94734	4/0	1/2	1-3/4	PURPLE	4/0	3/0	2/0	3/0(450)	4.72	1.42	1.00	.13	.51	.62	2.99	1.75	.26	.77	10	
94735	250	3/8	1	YELLOW	250	-	3/0	4/0(550)	3.78	1.61	1.09	.15	.41	.38	1.81	1.00	.26	.84	10	
94736	250	1/2	1-3/4	YELLOW	250	-	3/0	4/0(550)	4.96	1.61	1.09	.15	.51	.62	2.99	1.75	.26	.84	10	
94737	300	1/2	1-3/4	WHITE	300	4/0	4/0	262.6	5.31	1.97	1.19	.15	.51	.62	2.99	1.75	.31	.94	10	
94738	350	3/8	1	RED	350	250	250	313.1	4.60	1.97	1.28	.17	.41	.38	1.81	1.00	.33	1.02	10	
94739	350	1/2	1-3/4	RED	350	250	250	313.1	5.39	1.97	1.28	.17	.51	.62	2.99	1.75	.33	1.02	10	
94740	400	1/2	1-3/4	BLUE	400	300	300	350	5.47	1.97	1.39	.18	.51	.62	2.99	1.75	.33	1.08	10	
94741	500	3/8	1	BROWN	500	350	350	373.3	5.04	2.24	1.54	.22	.41	.38	1.81	1.00	.35	1.20	10	
94742	500	1/2	1-3/4	BROWN	500	350	350	373.3	5.75	2.24	1.54	.22	.51	.62	2.99	1.75	.35	1.20	10	
94744	600	1/2	1-3/4	GREEN	600	400	400	444.4	5.79	2.24	1.72	.25	.51	.62	2.99	1.75	.39	1.34	6	
94746	750	1/2	1-3/4	BLACK	750	600	500	-	6.30	2.64	1.90	.27	.51	.62	2.99	1.75	.43	1.47	3	

Copper Flex Cable Short Barrel Compression Splices



DIMENSIONS = INCHES

CAT. NO.	CONDUCTOR RANGE	COLOR CODE	COMM	ASTM CLASS	WELDING CLASS H	WELDING CLASS M	DLO	LENGTH (A)	F1	F2	BOX QTY
94750	8	RED	8	10	10	-	.90	.12	.32	50	
94751	6	BLUE	6	8	8	(61)	1.00	.16	.34	50	
94752	4	GRAY	4	6	6	(105)	1.00	.16	.42	50	
94753	2	BROWN	2	4	4	(125)	1.25	.18	.49	25	
94754	1	GREEN	1	2	2	(150)	1.80	.18	.53	25	
94755	1/0	PINK	1/0	1	1	(225)	1.60	.18	.56	10	
94756	2/0	BLACK	2/0	1/0	1/0	1/0(275)	1.75	.24	.64	10	
94757	3/0	ORANGE	3/0	2/0	-	2/0(325)	1.75	.24	.72	10	
94758	4/0	PURPLE	4/0	3/0	2/0	3/0(450)	1.90	.26	.77	10	
94759	250	YELLOW	250	-	3/0	4/0(550)	2.00	.26	.84	10	
94760	300	WHITE	300	4/0	4/0	262.6	2.10	.31	.94	10	
94761	350	RED	350	250	250	313.1	2.10	.33	1.02	10	

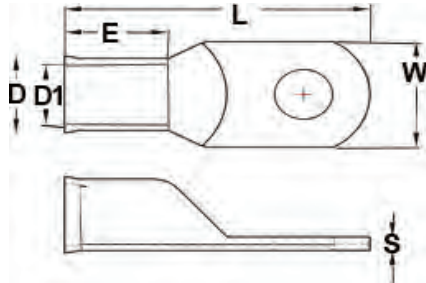
Copper Tubular Lugs



- DC Battery, Solar and AC Electrical Applications
- High Conductivity Seamless Tubular Copper
- Electro-Tin Plated
- Flared Belled Barrel
- 105°C 600V
- UL & cUL Listed



DIMENSIONS = INCHES

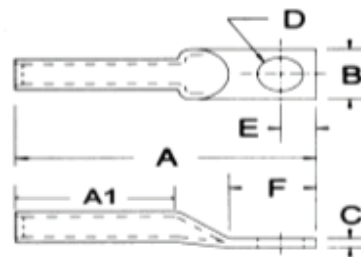


CAT. NO.	WIRE AWG	STUD SIZE D2	W	D1	D	L	E	S	BOX QTY
92002	6	3/8	.55	.230	.307	1.33	.354	.067	25
92004	4	3/8	.55	.287	.358	1.40	.394	.071	25
92006	2	3/8	.65	.339	.433	1.71	.630	.091	25
92008	2	1/2	.75	.339	.433	1.71	.630	.091	25
92010	1/0	3/8	.75	.417	.512	1.85	.630	.098	25
92012	1/0	1/2	.75	.417	.512	1.85	.630	.098	25
92014	2/0	3/8	.83	.461	.563	2.05	.728	.102	25
92016	2/0	1/2	.83	.461	.563	2.05	.728	.102	25

Meter Socket Lugs



- Uses 840 Common Dies - One Die Installs All Sizes
- For Meter Pan and General Applications
- Accepts Both Aluminum and Copper Conductors
- Made of High Conductivity Aluminum
- Connector Barrel is Coated with Oxide Inhibiting Compound
- Tin Plated
- Marked with Conductor Sizes and Die References
- Meets or Exceeds Class A Requirements of ANSI C119.4



DIMENSIONS = INCHES

CAT. NO.	WIRE SIZE—ALUMINUM OR COPPER WIRE SIZE				STUD SIZE D	A	A1	B	F
	CONCENTRIC	COMPRESSED	COMPACT	SOLID					
93912	2/0	2/0	3/0	3/0	3/8	3-1/4	1-3/8	1-15/16	1-5/16
93920	4/0	4/0	250	-	3/8	3-1/4	1-3/8	1-15/16	1-5/16



CONNECTORS

Compression Connectors

Insulated Service Entrance Compression Splices - 5/8" Die



FOR STANDARD CONDUCTORS

- Meets or Exceeds Requirements of ANSI C119.4 Class A-3, When Properly Installed on Aluminum to Aluminum or Aluminum to Copper Conductors
- High Conductivity Aluminum Splices Have Solid Center Barriers and Large Chamfers to Ease Cable Insertion
- Pre-filled with Oxide Inhibitor Compound
- Tough Stabilized Nylon Sleeves Resist Installation Tool Pressure, Providing Reliable 600 Volt Insulation
- Color Coded End Caps and Marked with Catalog Numbers, Strip Lengths Installation Die References and Compression Locations
- RUS Approved, ANSI C119.4 Compliant

2-25/32" LENGTH 5/8" DIE

DIMENSIONS = INCHES

CAT. NO.	MODEL#	CONDUCTOR A AL OR CU						CONDUCTOR B AL OR CU						BOX QTY
		COLOR	ACSR	STR	SOL	DIA. MAX	DIA. MIN	COLOR	SOL	STR	ACSR	DIA. MAX	DIA. MIN	
90696	UGG 88	GREEN	-	#8	#6	.162	.144	GREEN	#6	#8	-	.162	.144	100
90691	UBBR 61							BROWN	#8	#10	-	.128	.114	100
90692	UBG 68	BLUE	#6	#6	#4	.204	.184	GREEN	#6	#8	-	.162	.144	100
90694	UBB 66							BLUE	#4	#6	#6	.204	.184	100
90685	UOBR 41							BROWN	#8	#10	-	.128	.114	100
90686	UOG 48							GREEN	#6	#8	-	.162	.144	100
90690	UOB 46	ORANGE	#4	#4	#2	.258	.213	BLUE	#4	#6	#6	.204	.184	100
90688	UOO 44							ORANGE	#2	#4	#4	.258	.213	100
90676	URBR 21							BROWN	#8	#10	-	.128	.114	100
90677	URG 28							GREEN	#6	#8	-	.162	.144	100
90684	URB 26	RED	#2	#1 & #2	-	.328	.268	BLUE	#4	#6	#6	.204	.184	100
90678	URO 24							ORANGE	#2	#4	#4	.258	.213	100
90680	URR 22							RED	-	#1 & #2	#2	.328	.268	100
90671	UYG 08							GREEN	#6	#8	-	.162	.144	100
90673	UYB 06							BLUE	#4	#6	#6	.204	.184	100
90674	UYO 04	YELLOW	1/0	1/0	-	.398	.368	ORANGE	#2	#4	#4	.258	.213	100
90672	UYR 02							RED	-	#1 & #2	#2	.328	.268	100
90675	UYU 00							YELLOW	-	1/0	1/0	.398	.368	100

Insulated Service Entrance Compression Splices - 840 Series Die



FOR HEAVY-DUTY OVERHEAD SERVICES

- Meets or Exceed Requirements of ANSI C119.4 Class A-3, When Properly Installed on Aluminum to Aluminum or Aluminum to Copper Conductors
- High Conductivity Aluminum Splices Have Solid Center Barriers and Large Chamfers to Ease Cable Insertion
- Pre-filled with Oxide Inhibitor Compound
- Tough Stabilized Nylon Sleeves Resist Installing Tool Pressure, Providing Reliable 600 Volt Insulation
- Color Coded End Caps and Marked with Catalog Numbers, Strip Lengths, Installation Die References & Compression Locations
- RUS Approved, ANSI C119.4 Compliant

5-1/2" LENGTH 840 SERIES DIE

DIMENSIONS = INCHES

CAT. NO.	MODEL#	CONDUCTOR A AL OR CU						CONDUCTOR B AL OR CU						BOX QTY
		COLOR	ACSR	STR.	COMPR.	COMPT.	COLOR	ACSR	STR.	COMPR.	COMPT.			
91228	XIN202						RED	#2	#1	#1	1/0	25	.144	100
91229	XIN2010	GRAY	2/0	2/0	2/0	3/0	YELLOW	1/0	1/0	1/0	2/0	25	.114	100
90668	XIN2020						GRAY	2/0	2/0	2/0	3/0	25	.144	100
91232	XIN302	BLACK	3/0	3/0	3/0	4/0	RED	#2	#1	#1	1/0	25	.184	100
91237	XIN402						RED	#2	#1	#1	1/0	25	.114	100
91238	XIN4010	PINK	4/0	4/0	4/0	250	YELLOW	1/0	1/0	1/0	2/0	25	.144	100
90669	XIN4020						GRAY	2/0	2/0	2/0	3/0	25	.184	100

Straight Solid Pin Terminal Connectors



- Straight Solid Pin
- All-Aluminum Pin Terminal designed for Termination of both Aluminum and Copper Conductors - Tin Plated
- Barrel is Pre-Filled with Oxide Inhibitor
- Die Index and Crimp Marks on Barrel
- Supplied with EPDM Insulating Cover
- Rated 600 Volt



DIMENSIONS = INCHES

CAT. NO.	WIRE SIZE	PIN SIZE	O.D.	I.D.	PIN DIA.	TOTAL LENGTH	PIN LENGTH	BODY LENGTH	COLOR CODE	INNER BOX	OUTER BOX
90970	6	4	.598	.220	.240	1.85	.681	1.17	TAN	25	250
90971	4	4	.598	.236	.240	1.85	.681	1.17	TAN	25	250
90972	2	4	.598	.299	.240	1.84	.680	1.16	TAN	25	250
90973	1	3	.598	.318	.250	1.99	.830	1.16	TAN	10	100
90974	1/0	2	.598	.370	.290	1.99	.830	1.16	TAN	10	100
90975	2/0	1	.850	.429	.330	2.20	.830	1.37	WHITE	10	100
90976	3/0	1/0	.850	.476	.370	2.59	1.22	1.37	WHITE	10	100
90977	4/0	2/0	.850	.476	.370	2.59	1.22	1.37	WHITE	10	100
90978	250 MCM	3/0	1.09	.594	.460	2.62	1.22	1.40	BROWN	10	100
90979	300 MCM	4/0	1.09	.653	.530	2.73	1.33	1.40	BROWN	10	100
90980	350 MCM	250	1.09	.716	.570	2.73	1.33	1.40	BROWN	10	100
90981	400 MCM	300	1.31	.763	.620	3.07	1.59	1.48	PINK	10	100
90982	500 MCM	350	1.31	.826	.680	3.07	1.59	1.48	PINK	10	100
90983	600 MCM	400	1.46	.921	.720	3.67	1.64	2.03	YELLOW	3	30
90984	750 MCM	500	1.46	1.03	.810	3.78	1.75	2.03	YELLOW	3	30

Offset Solid Pin Terminal Connectors



- Offset Solid Pin
- All-Aluminum Pin Terminal Designed for Termination of Both Aluminum and Copper Conductors - Tin Plated
- Barrel is Pre-Filled with Oxide Inhibitor
- Die Index and Crimp Marks on Barrel
- Supplied with EPDM insulating cover
- Rated 600 Volt



DIMENSIONS = INCHES

CAT. NO.	WIRE SIZE	PIN SIZE	O.D.	I.D.	PIN DIA.	TOTAL LENGTH	PIN LENGTH	BODY LENGTH	COLOR CODE	INNER BOX	OUTER BOX
90985	2/0	1	.850	.440	.330	2.69	1.12	1.57	WHITE	10	100
90986	3/0	1/0	.850	.500	.370	2.80	1.25	1.55	WHITE	10	100
90987	4/0	2/0	.850	.547	.420	2.78	1.27	1.51	WHITE	10	100
90988	250 MCM	3/0	1.09	.594	.460	2.78	1.27	1.51	BROWN	10	100
90989	300 MCM	4/0	1.09	.657	.530	3.08	1.46	1.62	BROWN	10	100
90990	350 MCM	250	1.09	.704	.570	3.08	1.46	1.62	BROWN	10	100
90991	400 MCM	300	1.31	.763	.620	3.38	1.68	1.70	PINK	10	100
90992	500 MCM	350	1.31	.842	.680	3.38	1.68	1.70	PINK	10	100
90993	600 MCM	400	1.46	.821	.720	3.99	1.72	2.27	YELLOW	3	30
90994	750 MCM	500	1.46	1.03	.810	4.18	1.72	2.46	YELLOW	3	30

Anti-Oxidant

- For AL/AL and AL/CU Wire Connections and Aluminum Conduit Joint Threads
- For Use with All Types of Pressure Type Wire Connectors Including Compression, Screw-On, Tap, Service Entrance and Split Bolts
- Carrier Material Excludes Air to Prevent Further Oxidation
- Reduces Corrosion, Galling and Seizing
- Promotes Good Ground Continuity Through the Joint
- Improves Efficiency & Service Life of Aluminum Electrical Connections
- Temperature Range: -40°F to 302°F (-40°C to 150°C), 600 Volt
- Provides Additional Inter-Strand and Inter-Conductor Current Paths for Improved Conductivity and Cooler Connections
- Suspended Zinc Particles Penetrate and Reduce Aluminum Oxidation



CAT. NO.	SIZE	MOQ
99901	1 OUNCES	1
99904	4 OUNCES	1
99908	8 OUNCES	1

Dual Rated Aluminum Mechanical Splices



UL486B LISTED
AL9CU



- Manufactured from High Strength 6061-T6 Aluminum Alloy to Ensure Both Maximum Strength and Conductivity
- Dual Rated for Both Copper and Aluminum Conductors and Electro-Tin Plated for Low Contact Resistance and Protection Against Corrosion
- Assembly Can be Made with Only a Screwdriver or Allen Wrench and Connectors Are Re-Usable
- Rated 600V; 194°F (90°C)
- 90612-90614 Have Slotted Screws
- UL486B LISTED AL9CU



FIG 1



FIG 2

DIMENSIONS = INCHES

CAT. NO.	AWG	FIG	WIRE RANGE	LENGTH	WIDTH	HEIGHT	BOX QTY
90612	2	1	2-14	1.12	.44	.50	50
90614	1/0	1	1/0-14	1.50	.53	.63	25
90615	2/0	1	2/0-8	1.59	.56	.70	25
90616	250	2	4/0-250MCM-6	3.94	1.00	1.13	10
90617	250	1	4/0-250MCM-6	2.00	.84	1.10	10
90620	500	2	500MCM-3/0	4.19	1.36	1.50	3
90624	750	2	750MCM-250MCM	6.06	1.53	1.75	1

Dual Rated Aluminum Mechanical Turn-Prevent Lugs

NEW
BULK PACKS

- Set Screw Connectors with a Turn Prevent on the bottom of the Tang to Eliminate Potential Movement/Torquing of the Connector
- Made of 6061-T6 Aluminum Alloy
- Tin Plated for Low Contact Resistance & Corrosion Protection
- Suitable for use with Both Copper & Aluminum Conductors
- Rated 600V



UL486B LISTED
AL9CU

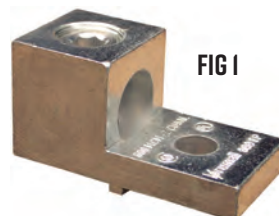


FIG 1



FIG 2

DIMENSIONS = INCHES

CAT. NO.	FIG	WIRE RANGE	DIMENSIONS			STUD SIZE	TURN PREVENT TO MTG HOLE CENTER	BOX QTY
			LENGTH	WIDTH	HEIGHT			
ONE CONDUCTOR - ONE HOLE MOUNT								
91310	1	2-14	1.16	.50	.55	0.25	0.500	100
91311	1	1/0-14	1.46	.63	.79	0.25	0.500	50
91311B	1	1/0-14	1.46	.63	.79	0.25	0.500	1,000
91312	1	2/0-14	1.46	.63	.79	0.25	0.406	50
91312B	1	2/0-14	1.46	.63	.79	0.25	0.406	1,000
91314	1	300-6	2.00	.94	1.12	0.3125	0.625	25
91316	1	350-6	2.25	1.26	1.25	0.3125	0.625	20
91316B	1	350-6	2.25	1.26	1.25	0.3125	0.625	200
91317	1	500-4	2.82	1.50	1.57	0.50	0.625	6
91318	1	600-2	3.19	1.50	1.57	0.375	0.625	6
91318B	1	600-2	3.19	1.50	1.57	0.375	0.625	100
TWO CONDUCTOR - ONE HOLE MOUNT								
91320	2	350-6	2.87	1.91	1.22	0.50	0.500	8
91322	2	600-2	3.20	2.40	1.57	0.50	0.625	2

Dual Rated Aluminum Mechanical Lugs

NEW
BULK PACKS

UL **CSA**
UL486B LISTED
AL9CU

- Manufactured from High Strength 6061-T6 Aluminum Alloy to Insure Both Maximum Strength and Conductivity
- Dual Rated for both Copper and Aluminum Conductors
- Electro-Tin Plated for Low Contact Resistance and Protection Against Corrosion
- Assembly can be Made With Only a Screwdriver or Allen Wrench
- Connectors are Re-Usable
- NEMA Standard 1-3/4" Center Hole Spacing
- Rated 600V; 194°F (90°C)
- 90712-90718 & 90812-90814 Have Slotted Screws
- UL486B LISTED AL9CU

DIMENSIONS = INCHES

CAT. NO.	AWG	FIG	WIRE RANGE	LENGTH	WIDTH	HEIGHT	STUD SIZE	BOX QTY
ONE CONDUCTOR - ONE HOLE MOUNT								
90712	6	1	6STR.-14SOL.	1.06	0.50	0.50	0.25	100
90713	6	1	6STR.-14SOL.	1.06	0.50	0.50	0.25	100
90714	2	1	2STR.-14SOL.	1.16	0.50	0.55	0.25	100
90716	1/0	2	1/OSTR.-14SOL.	1.46	0.63	0.79	0.25	50
90716B	1/0	2	1/OSTR.-14SOL.	1.46	0.63	0.79	0.25	1,000
90718	2/0	2	2/OSTR.-14SOL.	1.46	0.63	0.79	0.25	50
90718B	2/0	2	2/OSTR.-14SOL.	1.46	0.63	0.79	0.25	1,000
90720	250	2	250MCM-6SOL.	2.00	0.94	1.12	0.3125	25
90720B	250	2	250MCM-6SOL.	2.00	0.94	1.12	0.3125	300
90722	350	2	350MCM-6SOL.	2.25	1.26	1.25	0.375	10
90722B	350	2	350MCM-6SOL.	2.25	1.26	1.25	0.375	200
90724	500	2	500MCM-4SOL.	2.82	1.50	1.57	0.375	10
90726	600	2	600MCM-2SOL.	3.19	1.50	1.57	0.375	10
90726B	600	2	600MCM-2SOL.	3.19	1.50	1.56	0.375	150
90728	800	2	800MCM-300MCM	3.37	1.75	1.94	0.625	3
90729	1000	2	1000MCM-500MCM	3.37	1.75	1.94	0.625	5

DIMENSIONS = INCHES

CAT. NO.	AWG	FIG	WIRE RANGE	LENGTH	WIDTH	HEIGHT	STUD SIZE	BOX QTY
ONE CONDUCTOR - TWO HOLE MOUNT								
90732	350	3	350MCM-6SOL.	1.13	1.13	1.25	0.50	15
90733	500	3	500MCM-4SOL.	4.22	1.50	1.57	0.50	6
90734	600	3	600MCM-2SOL.	4.22	1.50	1.57	0.50	5
90734B	600	3	600MCM-2SOL.	4.22	1.50	1.57	0.50	100
90735	800	3	800MCM-300MCM	4.62	1.75	1.94	0.50	5
90735B	800	3	800MCM-300MCM	4.62	1.75	1.94	0.50	100
90736	1000	3	1000MCM-500MCM	4.62	1.75	1.94	0.50	5
90736B	1000	3	1000MCM-500MCM	4.62	1.75	1.94	0.50	80
ONE CONDUCTOR - TWO HOLE MOUNT - SLOTTED MOUNTING HOLE								
90742	350	4	350MCM-4SOL.	3.97	1.13	1.25	0.50	5

DIMENSIONS = INCHES

CAT. NO.	AWG	FIG	WIRE RANGE	LENGTH	WIDTH	HEIGHT	STUD SIZE	BOX QTY
TWO CONDUCTORS - ONE HOLE MOUNT								
90812	1/0	5	1/OSTR.-14SOL.	1.34	1.12	0.69	0.28	25
90814	2/0	5	2/OSTR.-14SOL.	1.47	1.19	0.75	0.28	12
90814B	2/0	5	2/OSTR.-14SOL.	1.47	1.19	0.75	0.28	400
90816	250	6	250MCM-6SOL.	1.94	1.72	1.00	0.41	8
90818	350	6	350MCM-6SOL.	2.12	1.88	1.09	0.56	6
90818B	350	6	350MCM-6SOL.	2.12	1.88	1.09	0.56	150
90820	600	6	600MCM-2SOL.	3.19	2.41	1.56	0.56	3
90820B	600	6	600MCM-2SOL.	3.19	2.41	1.56	0.56	80
90822	800	6	800MCM-300MCM	3.38	2.93	1.94	0.66	3
90824	1000	6	1000MCM-350MCM	3.50	3.50	1.94	0.66	3
TWO CONDUCTORS - TWO HOLE MOUNT								
90841	250	7	250MCM-6SOL.	2.56	1.66	1.19	0.50	8
90842	350	7	350MCM-6SOL.	4.13	1.91	1.22	0.50	6
90844	600	7	600MCM-2SOL.	4.65	2.41	1.51	0.56	3
90844B	600	7	600MCM-2SOL.	4.65	2.41	1.51	0.56	50
90845	800	7	800MCM-1/OSTR.	4.75	2.75	1.69	0.56	3
90845B	800	7	800MCM-1/OSTR.	4.75	2.75	1.69	0.56	50
90847	1000	7	1000MCM-500MCM	4.94	3.19	1.88	0.56	3

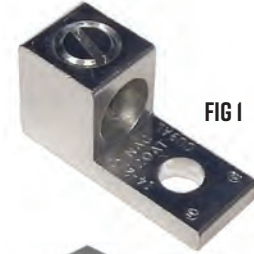


FIG 1

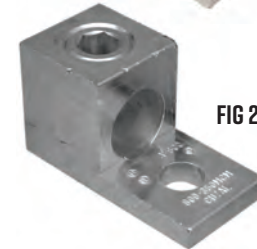


FIG 2



FIG 3



FIG 4



FIG 5



FIG 6



FIG 7

Dual Rated Aluminum Mechanical Lugs

NEW
BULK PACKS

UL **CSA**
UL486B LISTED
AL9CU

- Manufactured from High Strength 6061-T6 Aluminum Alloy to Insure Both Maximum Strength and Conductivity
- Dual Rated for Both Copper and Aluminum Conductors
- Electro-Tin Plated for Low Contact Resistance and Protection Against Corrosion
- Assembly can be Made With Only a Screwdriver or Allen Wrench
- Connectors are Re-Usable
- NEMA Standard 1-3/4" Center Hole Spacing
- Rated 600V; 194°F (90°C)
- UL486B LISTED AL9CU

Mechanical Connectors CONNECTORS



FIG 8



FIG 9

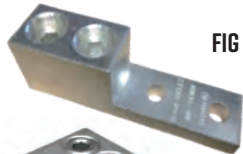


FIG 10



FIG 11



FIG 12



FIG 13

DIMENSIONS = INCHES

CAT. NO.	AWG	FIG	WIRE RANGE	LENGTH	WIDTH	HEIGHT	STUD SIZE	BOX QTY
THREE CONDUCTORS - TWO & FOUR HOLE MOUNT								
90852	300	8	300MCM-6SOL.	4.00	2.81	1.19	0.50	4
90854	350	8	350MCM-6SOL.	4.13	3.00	1.21	0.50	4
90857	500	8	500MCM-2SOL.	4.63	3.75	1.63	0.50	2
90858	600	8	600MCM-2SOL.	4.63	3.75	1.63	0.50	2
90858B	600	8	600MCM-2SOL.	4.63	3.75	1.63	0.50	25
90860	800	8	800MCM-300MCM	4.75	4.50	1.75	0.50	2
90862	1000	8	1000MCM-500MCM	4.75	4.50	1.75	0.50	2
FOUR CONDUCTORS - FOUR HOLE MOUNT								
90872	250	9	250MCM-6SOL.	4.13	3.74	1.25	0.50	4
90874	350	9	350MCM-6SOL.	4.13	3.94	1.25	0.50	4
90875	500	9	500MCM-4SOL.	4.58	5.00	1.62	0.50	2
90876	600	9	600MCM-4SOL.	4.58	5.00	1.62	0.50	2
90876B	600	9	600MCM-4SOL.	4.58	5.00	1.62	0.50	20
90878	800	9	800MCM-300MCM	4.62	5.97	1.94	0.50	2
90880	1000	9	1000MCM-350MCM	4.62	5.97	1.94	0.50	2

DIMENSIONS = INCHES

CAT. NO.	AWG	FIG	WIRE RANGE	LENGTH	WIDTH	HEIGHT	STUD SIZE	BOX QTY
ONE CONDUCTOR - TWO HOLE MOUNT								
90941	600	10	600MCM-2SOL.	5.75	1.50	1.57	0.50	4
90941B	600	10	600MCM-4SOL.	5.75	1.50	1.57	0.50	100
90942	800	10	800MCM-300MCM	5.75	1.75	1.94	0.50	4
90944	1000	10	1000MCM-500MCM	5.75	1.75	1.94	0.50	4
TWO CONDUCTORS - TWO HOLE MOUNT								
90950	350	11	350MCM-6SOL.	5.15	1.91	1.22	0.50	4
90951	600	11	600MCM-4SOL.	5.58	2.40	1.57	0.50	2
90952	1000	11	1000MCM-350MCM	5.75	3.56	1.94	0.50	2

DIMENSIONS = INCHES

CAT. NO.	AWG	FIG	WIRE RANGE	LENGTH	WIDTH	HEIGHT	STUD SIZE	BOX QTY
THREE CONDUCTORS - TWO & FOUR HOLE MOUNT								
90961	600	12	600MCM-2SOL.	5.58	3.75	1.63	0.50	2
90962	800	12	800MCM-350MCM	5.75	4.57	1.94	0.50	2
90963	1000	12	1000MCM-500MCM	5.75	4.57	1.94	1	2
FOUR CONDUCTORS - FOUR HOLE MOUNT								
90964	250	13	250MCM-6SOL.	5.00	3.30	1.02	0.56	2
90966	600	13	600MCM-2SOL.	5.58	5.00	1.62	0.50	2
90967	800	13	800MCM-350MCM	5.58	5.51	1.94	0.50	2
90968	1000	13	1000MCM-350MCM	4.62	5.97	1.94	0.50	2

Dual Rated Aluminum Mechanical Panel Board Lugs

NEW
BULK PACKS

UL **SR**
UL486B LISTED
AL9CU



CONNECTORS
Mechanical Connectors

DIMENSIONS = INCHES

CAT. NO.	AWG	FIG	WIRE RANGE	LENGTH	WIDTH	HEIGHT	HOLE SPACE	STUD SIZE	BOX QTY
PANELBOARD LUGS - TWO CONDUCTORS									
90912	300	1	300MCM-6SDL	2.99	1.00	2.00	-	0.3125	10
90914	600	2	600MCM-2STR.	4.92	1.50	3.00	1.38	0.375	2
90914B	600	2	600MCM-2STR.	4.92	1.50	3.00	1.38	0.375	50
90916	750	2	750MCM - 1/0STR.	4.92	1.60	3.00	1.38	0.375	2
90916B	750	2	750MCM - 1/0STR.	4.92	1.60	3.00	1.38	0.375	50
PANELBOARD LUGS - THREE CONDUCTORS									
90918	600	3	600MCM-2STR.	4.92	2.70	3.00	1.38	0.375	2
90918B	600	3	600MCM - 3/0STR.	4.92	2.70	3.00	1.38	0.375	24
90920	750	3	750MCM- 1/0STR.	4.92	2.80	3.00	1.38	0.375	2
PANELBOARD LUGS - FOUR CONDUCTORS									
90924	600	4	600MCM-2STR.	4.92	2.70	3.00	1.38	0.375	2
90924B	600	4	600MCM-2STR.	4.92	2.70	3.00	1.38	0.375	24
90926	750	4	750MCM - 1/0STR.	4.92	2.80	3.00	1.38	0.375	2
90926B	750	4	750MCM - 1/0STR.	4.92	2.80	3.00	1.38	0.375	24



FIG 1



FIG 2



FIG 3



FIG 4

MECHANICAL LUG TORQUE VALUES

TIGHTEN TORQUE SLOTTED SCREWS (IN LBS)
PER UL480AB TABLE 23

WIRE SIZE	TORQUE
#2-2/0	50
#4-#6	45
#8	40
#10-#14	35

TIGHTEN TORQUE INTERNAL HEX SCREWS (IN LBS)
PER UL480AB TABLE 23

CONNECTOR SIZE	TORQUE
1000	600
750-800	500
500-600	375
250-350	275
1/0-2/0	120

Copper Mechanical Lugs



FIG 1



FIG 2



FIG 3



FIG 4

- Solid One-Piece Copper Connector Made From Extruded or Stamped Electrolytic Copper for Superior Mechanical Strength and Excellent Electrical Performance
- Steel Slotted or Allen-Head Screw
- Suitable For Use With Copper Wire Only
- Rated 600V

DIMENSIONS = INCHES

CAT. NO.	FIG	WIRE RANGE	BOLT SIZE	DIMENSIONS			PAD THICKNESS	SCREW TYPE	BOX QTY
				LENGTH	WIDTH	HEIGHT			
EXTRUDED COPPER - STRAIGHT TANG									
90560	1	6-14	1/4	1.020	5/16	0.375	3/32	1/4" HEX	100
90562	1	4-14	1/4	1.075	0.44	0.45	3/32	1/4" HEX	100
90564	1	2-14	5/16	1.125	0.48	0.458	1/8	1/4" HEX	50
90566	1	1/0-14	7/16	1.277	0.66	0.548	1/8	1/4" HEX	50
90568	1	4/0-2	5/8	1.950	0.95	0.812	7/32	1/4" HEX	10
90593	2	350 MCM-6	9/16	2.00	1.92	1.12	3/16	5/16" HEX	15
COPPER - STRAIGHT & ROUND TANG									
90506	3	6-14	1/4	1.02	0.40	0.375	1/16	SLOTTED	100
90507	3	4-14	5/16	1.075	0.444	0.45	3/32	SLOTTED	100
90550	4	8-14	3/16	1-3/16	0.375	0.375	5/64	SLOTTED	100
90552	4	4-14	1/4	1-1/8	0.50	0.09	3/32	SLOTTED	100
90554	4	1/0-8	5/16	1-1/2	0.75	0.75	3/32	1/4" HEX	50
90556	4	250 MCM-6	3/8	1-15/16	0.93	1-.063	1/8	1/4" HEX	25

Copper Mechanical OffSet Lugs



FIG 1

- Manufactured from High Strength Pure Electrolytic Copper to Insure Both Maximum Strength and Conductivity
- Arched Pressure Bar and V-bottom Collar Positions the Wire for Positive Contact and Maximum Reliability
- Steel Plated Screws/Bolts Prevent Rusting
- Easy to Install with Screwdriver, Wrench or Pliers
- Copper Finish
- Rated 600 Volts

DIMENSIONS = INCHES

CAT. NO.	FIG	AMP RATING	WIRE RANGE	LENGTH	WIDTH	HEIGHT	HOLE SIZE	BOX QTY
SINGLE CONDUCTOR OFF-SET								
90514	1	35A	6-14	1.19	0.38	0.50	0.19	100
90515	1	70A	4-14	1.31	0.50	0.56	0.27	100
90516	1	90A	2-8	1.55	0.50	0.65	0.36	50
90518	1	125A	1/0-2	1.97	0.63	0.88	0.27	50
90520	1	175A	3/0-4	2.19	0.75	1.03	0.41	25
90522	1	225A	4/0-2	2.38	1.00	1.17	0.34	25
90524	1	300A	350 MCM-1/0	3.16	1.00	1.39	0.41	18
90526	1	400A	500 MCM-1/0	4.25	1.50	1.57	0.41	3

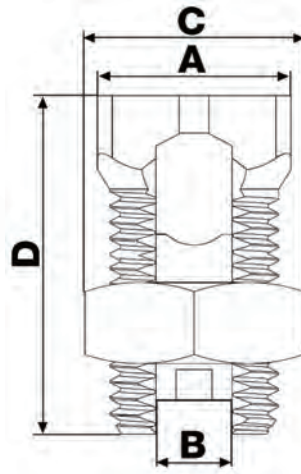
Hex Head Split Bolts

NEW

AVAILABLE
APRIL 2020

UL **CSA**
UL486A LISTED

UL467 LISTED
SUITABLE FOR
DIRECT BURIAL &
GROUNDING/BONDING



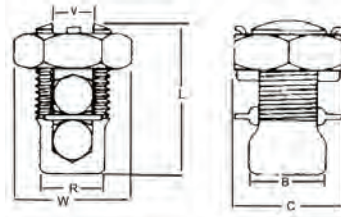
- Manufactured from High Strength High Conductivity Electrolytic Copper Alloy to Ensure Both Maximum Strength and Conductivity
- Rated for Copper Conductors Only
- Connectors are Re-Usable
- Rated 600V; 194°F (90°C)
- UL486 UL 486A-486B & CSA C22.2 No. 65-13
- UL 467 Listed for Direct Burial & Grounding/Bonding

DIMENSIONS = INCHES

CAT. NO.	AWG	MAX RUN TO MAX TAP	MIN RUN TO MIN. TAP	MAX RUN TO MIN TAP	MIN EQUAL TAP & RUN	TORQUE IN LB	A	B	C	D	BOX QTY
90301	8	8-8	16-16	8-16	16-16	80	.472	.145	.562	.854	100
90302	6	6-6	10-16	6-16	10-10	165	.492	.165	.625	.906	100
90303	4	4-4	8-16	4-16	8-8	165	.709	.268	.812	1.16	50
90304	3	2-2	4-8	2-8	4-4	275	.600	.260	.750	1.50	50
90305	2	2-2	6-14	2-14	6-6	275	.748	.326	.812	1.26	50
90306	1/0	1/0-1/0	4-14	1/0-14	4-4	385	.787	.374	.937	1.54	50
90307	2/0	2/0-2/0	2-14	2/0-14	2-2	385	.866	.421	1.06	1.69	25
90308	3/0	3/0-3/0	2-8	3/0-8	2-2	500	1.10	.531	1.25	2.09	25
90309	4/0-250	250-250	1/0-8	250-8	1/0-1/0	650	1.10	.579	1.25	2.09	25
90310	350	350-350	4/0-1/0	350-1/0	4/0-4/0	650	1.22	.700	1.50	2.36	12
90311	500	500-500	250-2/0	500-2/0	250-250	825	1.34	.815	1.75	2.84	12
90312	750	750-750	350-4/0	750-4/0	350-350	1000	1.94	1.02	2.31	3.51	1
90313	1000	1000-1000	500-4/0	1000-4/0	500-500	1100	2.19	1.17	2.56	3.90	1

CONNECTORS
Split Bolt - Hex Head

Copper Split Bolt Connectors - Direct Burial



UL467 LISTED
SUITABLE FOR
DIRECT BURIAL &
GROUNDING/BONDING

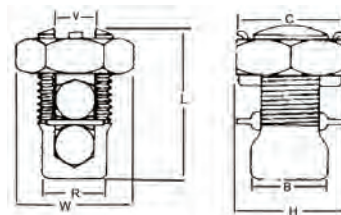


- UL listed for Copper and Copper Weld Stranded Wires Only
- Manufactured from Compact, High Strength, High Copper Content Alloy
- Free Running Threads and Easy To Grip Wrench Flats
- Highly Resistant to Cracking and Corrosion
- Provides a Maximum Pressure and Ensures a Secure Connection on all Combinations of Connectors
- UL 467 Listed for Direct Burial & Grounding/Bonding Applications
- Rated 600 Volts

DIMENSIONS = INCHES

CAT. NO.	AWG	MAX RUN TO MAX TAP	MIN RUN TO MIN TAP	MAX RUN TO MIN TAP	MIN EQUAL TAP & RUN	TORQUE IN-LB	B	C	L	R	V	W	BOX QTY
90314	8	8-8	10-16	8-16	10-10	88	.472	.562	.854	.413	.145	.650	100
90316	6	4-4	8-14	4-14	8-8	165	.492	.625	.906	.413	.165	.722	100
90318	4	4-4	6-14	4-14	8-8	165	.709	.812	1.16	.579	.268	.938	50
90320	2	2-2	6-14	2-14	6-6	275	.748	.812	1.26	.614	.326	.938	50
90322	1/0	1/0-1/0	2-14	1/0-14	4-4	385	.787	.937	1.54	.708	.374	1.08	50
90324	2/0	2/0-2/0	1-14	2/0-14	2-2	385	.866	1.06	1.69	.807	.421	1.28	25
90326	3/0	3/0-3/0	2/0-8	3/0-8	1-1	500	1.10	1.25	2.09	.976	.531	1.45	25
90328	4/0-250	250-250	4/0-8	250-8	1-1	500	1.10	1.25	2.09	1.06	.579	1.45	25
90330	350	350-350	350-1/0	350-1/0	2/0-2/0	650	1.22	1.50	2.36	1.18	.700	1.73	12
90332	500	500-500	500-2/0	500-2/0	300-300	825	1.34	1.75	2.84	1.34	.815	2.10	12
90334	750	750-750	750-350	750-#8	350-350	1000	1.94	2.31	3.51	1.94	1.02	2.31	1

Copper Split Bolt Connectors - With Spacer - Direct Burial



- UL listed for Copper and Copper Weld Stranded Wires Only
- Manufactured from Compact, High Strength, High Copper Content Alloy
- Uniform Bright Electro-Tin Plating Resists Corrosion, Reduces Contact Resistance for Maximum Conductivity
- Spacer Separates Dissimilar Conductors and Provides Enhanced Surface Contact Area Preventing Intermittent Contact Between Run & Tap Connectors
- Free Turning Threads and Easy To Grip Wrench Flats
- Highly Resistant to Cracking and Corrosion
- UL 467 Listed for Direct Burial & Grounding/Bonding Applications
- Rated for 600 Volts

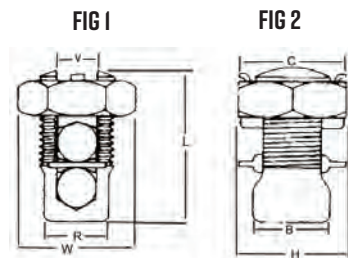
DIMENSIONS = INCHES

CAT. NO.	AWG	MAX RUN TO MAX TAP	MIN RUN TO MIN TAP	MAX RUN TO MIN TAP	MIN EQUAL TAP & RUN	TORQUE IN-LB	B	C	H	L	R	V	W	BOX QTY
90360	3/0	3/0-3/0	2/0-8	3/0-8	1-1	500	1.10	1.25	1.520	2.20	.976	.531	1.45	25
90362	4/0-250	250-250	4/0-8	250-8	1-1	500	1.10	1.25	1.574	2.22	1.06	.579	1.45	25
90364	350	350-350	350-1/0	350-1/0	2/0-2/0	650	1.22	1.50	1.771	2.56	1.18	.700	1.73	12
90366	500	500-500	500-2/0	500-2/0	300-300	825	1.34	1.75	1.968	2.95	1.34	.815	2.10	12

Dual Rated Split Bolts - Direct Burial

UL **CSA**
DIRECT BURIAL
UL467
UL486B LISTED
AL9CU

- UL 486B AL9CU Listed for All Combinations of Aluminum, Aluminum to Copper, and Copper to Copper Stranded Wires
- UL 467 Listed for Direct Burial & Grounding/Bonding Applications
- 90412-90420 Manufactured from Copper Alloy, 90422-90426 Manufactured From Aluminum Alloy
- Uniform Bright Electro-Tin Plating Resists Corrosion, Reduces Contact Resistance and Gives You Maximum Conductivity
- Spacer Separates Dissimilar Conductors and Provides Enhanced Surface Contact Area Preventing Intermittent Contact Between Run & Tap Connectors
- Free Turning Threads and Easy To Grip Wrench Flats
- Highly Resistant to Cracking and Corrosion
- Anti-Oxidant is Recommended For All Aluminum Terminations
- Rated for 600 Volts



DIMENSIONS = INCHES

CAT. NO.	FIG	AWG	MAX RUN TO MAX TAP	MIN RUN TO MIN TAP	MAX RUN TO MIN TAP	MIN EQUAL TAP & RUN	TEMP RATING	TORQUE IN-LB	B	C	L	H	R	V	W	BOX QTY
90412	1	6	4-4	8-14	4-14	8-8	75°C	165	.492	.625	.830	1.06	.413	.165	.722	100
90414	1	4	4-4	6-14	4-14	8-8	75°C	165	.709	.812	1.04	1.24	.579	.268	.938	50
90416	1	2	2-2	6-14	2-14	6-6	75°C	275	.748	.812	1.13	1.44	.614	.326	.938	50
90418	1	1/0	1/0-1/0	2-14	1/0-14	4-4	75°C	385	.787	.937	1.25	1.73	.708	.374	1.08	50
90420	1	2/0	2/0-2/0	1-14	2/0-14	2-2	75°C	385	.866	1.06	1.30	1.71	.807	.421	1.23	25
90422*	2	4/0	4/0-4/0	2-6	4/0-6	-	90°C	500	1.17	1.50	1.13	2.75	1.17	.560	1.73	30
90424*	2	350	350-350	1/0-4	350-4	-	90°C	650	1.66	1.68	1.48	2.99	1.50	.696	1.93	12
90426*	2	500	500-500	400-2	500-2	-	90°C	825	1.95	2.10	1.70	3.29	1.71	.850	2.30	12

* Not Direct Burial Rated

Service Post Connectors - One & Two Wire

UL **US**
LISTED
DIRECT BURIAL
UL467

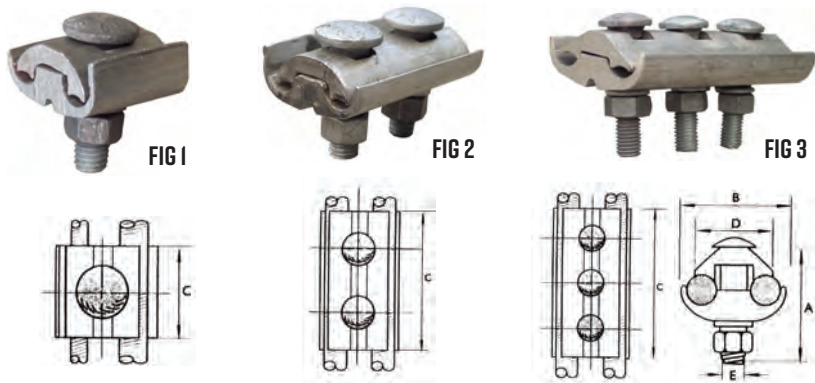
- Used To Ground One or Two Wires to Steel Structures, Transformers, Fence Posts, Steel Bar or Plate
- Lay-In Feature is Perfect for Continuous Loop Grounding Applications
- High Strength Electrolytic Copper
- UL 467 Listed for Direct Burial & Grounding/Bonding Applications in Earth or Concrete

DIMENSIONS = INCHES

CAT. NO.	AWG	WIRE RANGE	OVERALL LENGTH	EXPOSED LENGTH	INTERNAL THREAD	EXTERNAL THREAD	BOX QTY
1 WIRE							
90368	8	#14 - #8	1.69	.69	3/8" X 24	1/4" X 20	25
90369	6	#8 - #6	1.89	.89	1/2" X 20	1/4" X 20	25
90370	4	#10 - #4	1.95	.95	9/16" X 18	5/16" X 18	25
90371	2	#10 - #2	2.19	1.06	5/16" X 18	3/8" X 16	25
90372	1	#8 - #1	2.21	1.08	11/16" X 16	1/2" X 13	25
90373	2/0	#4 - 2/0	2.59	1.32	3/4" X 16	1/2" X 13	10
90374	3/0	#2 - 3/0	2.69	1.44	7/8" X 14	1/2" X 13	5
90375	4/0	#1 - 4/0	3.21	1.71	1-1/8" X 12	5/8" X 11	5
2 WIRE							
90380	8	(2) #14 - (2) #8	1.81	.81	3/8" X 24	1/4" X 20	25
90381	6	(2) #10 - (2) #6	1.97	.98	7/16" X 20	1/4" X 20	25
90382	4	(2) #12 - (2) #4	2.17	1.18	1/2" X 20	5/16" X 18	25
90383	2	(2) #12 - (2) #2	2.38	1.26	9/16" X 18	3/8" X 16	25
90384	1	(2) #2 - (2) #1	2.52	1.40	11/16" X 16	1/2" X 13	10
90385	1/0	(2) #10 - (2) 1/0	2.93	1.69	3/4" X 16	1/2" X 13	10
90386	2/0	(2) #10 - (2) 2/0	3.15	1.88	7/8" X 14	1/2" X 13	5
90387	4/0	(2) #10 - (2) 4/0	3.76	2.25	1-1/8" X 11	5/8" X 11	5



Aluminum Parallel Groove Clamps



- Use for Heavy Duty Service Entrance or Distribution
- Manufactured from Thermally Treated Extruded Aluminum Alloy
- High Electrical Conductivity, High Strength and Corrosion Resistance
- The Set Screw, Lock Washer and Nut Are Hot Dip Galvanized
- All Sizes Are Pre-Filled with Antioxidant Inhibitor

DIMENSIONS = INCHES

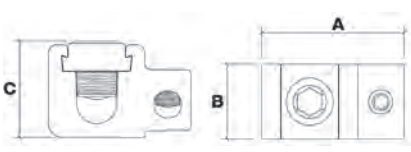
CAT. NO.	FIGURE	MAIN (GROOVE A)			TAP (GROOVE B)			INCHES					INNER BOX QTY	OUTER BOX QTY
		CU-AL	ACSR	WIRE DIAMETER	CU-AL	ACSR	WIRE DIAMETER	A	B	C	D	E		
96012	1	10-1/0	6-1/0	.102-.398	10-2	6-2	.102-.325	1.50	1.50	1.24	1.14	.394	50	100
96016	1	10-2/0	6-1/0	.098-.417	10-2/0	6-1/0	.098-.417	1.50	1.50	1.24	1.14	.394	50	100
96020	1	1/0-4/0	1/0-4/0	.373-.563	8-1/0	6-1/0	.128-.398	1.97	1.89	1.46	1.50	.394	50	100
96024	1	1/0-397.5	1/0-336.4	.373-.720	6-2/0	6-1/0	.162-.417	2.36	2.24	1.67	1.67	.394	50	100
96026	2	1/0-397.5	1/0-336.4	.373-.720	6-2/0	6-1/0	.162-.417	2.36	2.24	2.91	1.67	.394	-	50

Aluminum Parallel & Tee Tap Connectors



- Dual Rated for Both Copper and Aluminum Conductors and Electro Tin Plated to Provide Low Contact Resistance and Protection Against Corrosion
- Manufactured from High Strength 6061-T6 Aluminum Alloy to Ensure Both Maximum Strength and Conductivity
- Dual Entry Wire Holes Allow for Parallel or Tee Tap Connectors
- Assembly Can be Made With Only a Screwdriver or Allen Wrench
- Re-Usable
- Rated 90°C
- 600 Volt

DIMENSIONS = INCHES



CAT. NO.	AWG	MAIN WIRE	TAP WIRE	A	B	C	BOX QTY
91012	2	2-12	4-14	1.39	0.63	0.88	50
91014	1/0	1/0-2	1/0-14	1.75	0.75	1.00	25
91016	250-1/0	250-1/0	1/0-14	2.25	1.00	1.31	25
91018	250	250-1/0	250-6	2.00	1.00	1.31	12
91020	350	350-4/0	350-6	2.56	1.25	1.44	12
91022	500	500-350	500-2	3.13	1.38	1.75	12
91023	750	750-500	500-2	3.38	1.50	2.00	6

Aluminum Parallel & Tee Tap Covers



- Flexible Covers Allow for Either Parallel or 'T' Tap Wire Entry
- Secure Snap Eliminates the Need for Taping
- Rated 90°C; 600 Volt

DIMENSIONS = INCHES

CAT. NO.	AWG	COVER COLOR	L	W	H	BOX QTY
91112	2	YELLOW	2-7/32	1-9/32	1-7/64	12
91114	1/0	GRAY	2-5/8	2-5/32	1-1/4	12
91116	250	RED	3-7/16	2-7/8	1-5/8	12
91118	350	YELLOW	3-3/4	3-3/16	1-3/4	12
91120	500	BLUE	4-3/8	3-5/16	2-3/32	12
91122	750	ORANGE	4-5/8	3-7/16	2-11/32	12

Copper C-Taps

UL467 LISTED &
CSA C22.2 NO.41
SUITABLE FOR DIRECT BURIAL
& GROUNDING/BONDING



- Applications Include Copper to Copper Tapping, Splicing or Stub/Pigtail
- High Strength Electrolytic Copper
- Allows for 2 Continuous Parallel Conductors
- Compact Size & Range Taking



FIG 1

FIG 2

DIMENSIONS = INCHES

DIMENSIONS = INCHES

CAT. NO.	FIG	DIE COLOR	CONDUCTOR RANGE			DIMENSIONS				BOX QTY
			RUN	TAP	STRIP L	L	W (ID)	H	T	
91802	1	RED	14	16-14	1/2	.32	.18	.16	.07	275
			12	16-12						
			10	14						
91803	1	BLUE	10	10	5/8	.61	.32	.36	.07	275
			8	12						
91804	1	GRAY	6	10-12	5/8	.61	.32	.43	.07	200
		8	8-10							
91805	1	BROWN	4	8-10-12	1-1/4	1.17	.41	.43	.07	150
			6	6-8						
91806	1	GREEN	4	6-4	1-1/4	1.17	.45	.52	.07	100
			3	12-6						
91807	1	PINK	4	4	1-1/4	1.17	.49	.54	.07	100
			3	4-6						
			2	12-6						
91808	1	BLACK	1	12-4	2	1.75	.53	.64	.07	100
			2	4-6						
			3	4-3						
91809	1	ORANGE	1/0	12-4	2	1.75	.61	.71	.09	50
			2	4-2						
			2/0	12-4						
91810	1	PURPLE	1/0	2	2	1.75	.69	.77	.09	30
			1	1-2						
			3/0	2-12						
91811	1	YELLOW	2/0	1-2	1	1.75	.81	1.07	.09	30
			1/0	1/0-1						

CAT. NO.	FIG	DIE COLOR	CONDUCTOR RANGE			DIMENSIONS				BOX QTY
			RUN	TAP	STRIP L	L	W (ID)	H	T	
91812	2	BLUE	1/0	1/0-2	1	1.30	.79	.63	.16	50
			2/0	2/0-4						
			3/0	1/0-6						
			4/0	1-8						
91813	2	BROWN	2/0	2/0-1	1	1.46	.79	.79	.20	50
			3/0	3/0-3						
			4/0	4/0-4						
			250	1/0-8						
91814	2	PINK	2/0	2/0-1	1-1/8	1.67	1.03	.85	.20	25
			3/0	3/0-3						
			4/0	4/0-4						
			250	3/0-6						
91815	2	BLACK	3/0	2/0-1	1-1/8	1.71	1.03	.90	.20	25
			4/0	4/0-2/0						
			250	250-1						
			300	4/0-4						
91816*	2	YELLOW	350	3/0-6	1-5/16	1.87	1.28	1.02	.20	15
			300	300-3/0						
			350	350-1/0						
			400	300-2						
91817*	2	WHITE	450	250-4	1-5/16	2.17	1.29	1.18	.30	10
			500	250-6						
			350	350-4/0						
			400	400-2/0						
91818*	2	-	450	450-1	2-3/4	2.75	1.97	1.34	.16	5
			500	500-2						
			750-500	4/0-6						
			750	750-4/0						

*NOT LISTED FOR DIRECT BURIAL, GROUNDING OR BONDING

Copper C-Taps - Heavy Wall



- Heavy Wall High Strength Electrolytic Copper
- Allows for 2 Continuous Parallel Conductors
- Range Taking

UL467 LISTED &
CSA C22.2 NO.41
SUITABLE FOR DIRECT BURIAL
& GROUNDING/BONDING



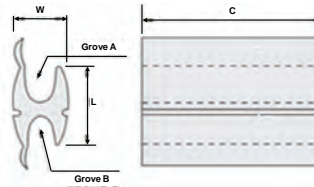
DIMENSIONS = INCHES

CAT. NO.	CONDUCTOR RANGE		DIE TYPE	DIMENSIONS						STRIP LENGTH	BOX QTY
	RUN MAX	TAP MAX		L (OD)	L (ID)	W	D	ENTRY			
91819	6-6	6-6	BG	.77	.46	.71	.43	.29	3/4	50	
91820	6-4	4-4	BG	.81	.53	.63	.47	.31	3/4	25	
91821	2-2	8-4	C	.98	.65	.75	.61	.37	3/4	50	
91822	2-2	2-2	C	1.05	.76	.76	.60	.45	3/4	50	
91823	1/0-2/0	1/0-2/0	C	1.35	.87	.95	.80	.43	1-1/8	25	
91824	3/0-4/0	1/0-2/0	D3	1.64	1.01	1.07	.97	.60	1-1/4	15	
91825	3/0-4/0	3/0-4/0	D3	1.58	1.10	1.07	.97	.56	1-1/4	15	

Aluminum H-Taps



Line Taps CONNECTORS

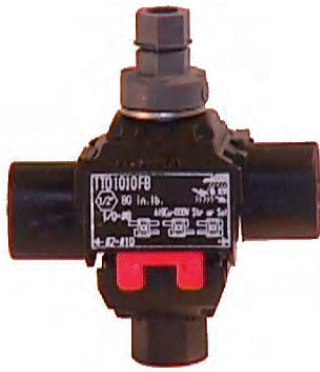


- Wide Range, Universal and Reversible Figure H-shaped 6061-T6 Aluminum Connector
- For Copper, Aluminum, ACSR and Compact Conductors
- Conductors are Separated In A & B Grooves
- Bendable Taps Secure both Run and Tap Conductors Freeing the Formable Ribs Provide Broad Contact Area
- Massive Aluminum Design Minimizes Corrosion
- Prefilled with Anti-Oxidant Joint Compound

DIMENSIONS = INCHES

CAT. NO.	CONDUCTOR RANGE										INSTALLATION INFO.				CTN QTY		
	STANDARD CONDUCTOR						COMPACT CONDUCTOR				CONN LENGTH	DIE NO.	NO. OF INDENTS				
	A GROOVE			BGROOVE			A GROOVE		BGROOVE				MECH	HYD			
ACSR	STR	SOL	ACSR	STR	SOL	ACSR	STR	ACSR	STR	ACSR	STR						
90430	-	-	1	-	8	8	-	-	-	-	-	-	-	-	-	-	
	3	2	2	-	10	10	-	-	-	-	-	-	13/16	5/8 BG	3	-	
	4	3	3	-	12	12	-	-	-	-	-	-	-	-	-	-	
	6	4	4	-	14	14	-	-	-	-	-	-	-	-	-	-	
	6	-	-	-	-	-	-	-	-	-	-	-	-	-	-	-	-
90433	-	1	-	-	1	-	1	1	1	1	1	1	-	-	-	-	
	2	2	2	2	2	2	2	2	2	2	2	2	1-7/16	0	4	2	
	3	3	3	3	3	3	3	3	3	3	3	3	-	-	-	-	
	4	4	4	4	4	4	4	4	4	4	4	4	-	-	-	-	
	6	6	6	6	6	6	6	6	6	6	6	6	-	-	-	-	
90435	-	2/0	2/0	-	1	1/0	2/0	2/0	1	1	-	-	1-11/16	0	5	2	
	1/0	1/0	1/0	2	2	1	1/0	2	2	-	-	-	-	-	-	-	
	1	1	1	3	3	3	1	1	3	3	3	3	-	-	-	-	
	2	2	-	4	4	4	2	2	4	4	4	4	-	-	-	-	
	3	-	-	6	6	6	-	-	6	6	6	6	-	-	-	-	
90454	-	2/0	2/0	-	1	1	2/0	2/0	1	1	-	-	1-1/8	0	5	2	
	1/0	1/0	1/0	2	2	2	1/0	1/0	2	2	2	2	-	-	-	-	
	1	1	1	3	3	3	1	1	3	3	3	3	-	-	-	-	
	2	2	2	4	4	4	2	2	4	4	4	4	-	-	-	-	
	3	3	-	6	6	-	-	-	6	6	6	6	-	-	-	-	
90462	4/0	4/0	4/0	4/0	4/0	4/0	266-18/1	266	266-18/1	266	266	266	1-3/8	0	5	2	
	3/0	3/0	3/0	3/0	3/0	3/0	4/0	250	4/0	250	250	250	-	-	-	-	
	2/0	2/0	2/0	2/0	2/0	2/0	3/0	4/0	3/0	4/0	4/0	4/0	-	-	-	-	
	1/0	1/0	-	1/0	1/0	-	2/0	3/0	2/0	3/0	3/0	3/0	-	-	-	-	
	-	-	4/0	-	3/0	3/0	-	-	-	-	-	-	-	-	-	-	-
90439	-	4/0	3/0	2/0	2/0	2/0	3/0	3/0	3/0	3/0	3/0	3/0	1-13/16	0	5	2	
	2/0	3/0	2/0	1/0	1/0	-	2/0	2/0	2/0	2/0	2/0	2/0	-	-	-	-	
	1/0	2/0	-	1	-	-	1/0	1/0	1/0	1/0	1/0	1/0	-	-	-	-	
	-	-	-	-	-	1/0	-	-	-	-	-	-	-	-	-	-	-
	-	-	-	-	1	1	-	-	1	1	1	1	-	-	-	-	-
90440	-	-	4/0	2	2	2	3/0	3/0	2	2	2	2	1-13/16	0	5	2	
	-	3/0	3/0	3	3	3	2/0	-	3	3	3	3	-	-	-	-	
	2/0	2/0	-	4	4	4	-	-	4	4	4	4	-	-	-	-	
	1/0	-	-	6	6	6	-	-	6	6	6	6	-	-	-	-	
	-	-	-	-	-	1/0	-	-	-	-	-	-	-	-	-	-	-
90444	-	-	-	-	1	1	-	-	1	1	1	1	1-13/16	0	5	2	
	-	-	-	2	2	2	266-18/1	266	2	2	2	2	-	-	-	-	
	4/0	4/0	-	3	3	3	-	-	-	-	-	-	-	-	-	-	
	3/0	-	-	4	4	4	-	-	-	-	-	-	-	-	-	-	
	-	-	-	6	6	6	-	-	-	-	-	-	-	-	-	-	-
90446	-	-	-	-	3/0	266-18/1	266	-	-	-	-	-	2-3/16	0	7	3	
	-	-	-	2/0	2/0	2/0	-	250	-	3/0	3/0	3/0	-	-	-	-	
	4/0	4/0	-	1/0	1/0	-	4/0	4/0	2/0	1/0	1/0	1/0	-	-	-	-	
	3/0	3/0	-	1	-	-	3/0	-	1/0	1/0	1/0	1/0	-	-	-	-	
	-	-	-	-	-	-	266-18/1	266-18/1	266-18/1	266	266	266	266	-	-	-	-
90447	4/0	4/0	-	4/0	4/0	-	-	250	-	250	250	250	2-7/16	0	7	3	
	3/0	3/0	-	3/0	3/0	-	4/0	4/0	4/0	4/0	4/0	4/0	-	-	-	-	
	-	-	-	-	-	-	-	-	-	-	-	-	-	-	-	-	

Insulation Piercing Connectors - Above Ground



INSTALLS IN JUST MINUTES
SAVING MANY MAN-HOURS ON THE JOB

ELIMINATES WIRE STRIPPING
CONNECTING & TAPING OF SPLIT BOLTS
AND ADDING INHIBITOR

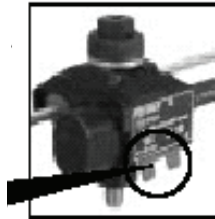
CAN BE INSTALLED ON ENERGIZED
CIRCUITS ELIMINATING POWER
SHUTDOWNS



Red 'Turbo Spacer'

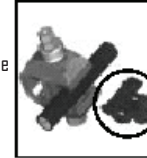
Allows for main wire to be inserted & hand tightened, while spacer holds the tap location completely open for easy wire insertion
All models except 96102 & 96104

'Turbo' Spacer

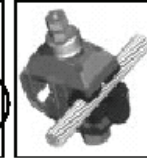


Blue Rubber Insert

Replaces insulation when used on bare wire. Used to avoid any damage on neutral messenger.



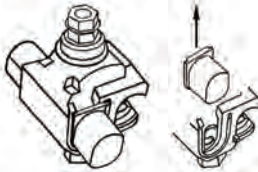
Remove blue insert if main wire is insulated



Leave blue insert if main wire is bare

Only on Models 96106, 96110, 96114

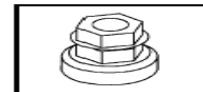
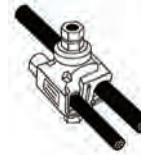
1 - Determine direction for tap conductor to enter connector.
Remove and discard extra end cap.



2 - Insert tap conductor, making sure conductor is fully seated in end cap.



3 - Place connector on main conductor & tighten the bolt with a closed-end wrench or socket until top shear-head nut breaks off.



Before Torquing



After Torquing

- Overhead services - both insulated & bare mains, above grade URD services, street lighting, non-tension splicing & tapping, insulated replacement for split bolts, tapping without cutting the main, gutter taps
- Double shear-head bolt guarantees correct torque every time, ensuring a quality connection, & eliminating the possibility of hot spots, damaged wires or loose connections
- No cable stripping required, simply insert the jacketed cable into the entry port & tighten with a 1/2" 6 point socket
- Turbo spacer allows tap side to remain open while you hand tighten the connector on the main wire (note models)
- The bolt and all external parts of the connector are completely isolated from energized parts and the bolt is covered by the plastic shear-head. The installer has no contact with an energized part
- Can be installed on energized conductors, however, the tap must not be under load
- Corrosion-free connection is good for hot, cold, damp, & salty connections. Properly installed the connector seals water-tight.
- This is accomplished by a sealant gel, that during installation is compressed and forces sealant to protect the connection from oxygen and water. Copper teeth are tin plated, the connector bodies are made from strength fiber-reinforced thermoplastic and galvanized steel bolts
- UL486B Listed for copper to copper, aluminum to aluminum, & copper to aluminum; 600 Volt; 194°F (90°C) Rated, Meets ANSI C119.4 requirements

DIMENSIONS = INCHES

CAT. NO.	NUMBER OF BOLTS	TORQUE IN INCH LBS.	BOLT HEAD SIZE	CONDUCTOR RANGE		DIMENSIONS IN INCHES			BOX QTY
				MAIN AWG	TAP AWG	H	W	L	
96102	1	80	1/2	2/0-6	8-14	3.6	1.7	2.7	12
96104	1	80	1/2	750-3/0	10-14	4.3	2.4	2.8	12
96106	1	80	1/2	1/0-8	2-10	3.7	2.0	3.0	12
96110	1	125	1/2	1/0-8	1/0-8	3.7	2.0	3.0	12
96108	1	125	1/2	4/0-3	2-10	3.9	1.7	2.7	12
96114	1	160	1/2	250-4	4/0-6	4.3	2.4	3.2	12
96116	2	330	5/8	350-1/0	350-1/0	5.4	3.1	5.0	4
96118	2	330	5/8	500-2/0	4/0-4	5.4	3.1	5.0	4
96120	2	330	5/8	500-4/0	350-1/0	5.4	3.0	5.0	4
96122	2	330	5/8	750-250	500-250	5.6	3.6	5.7	4

Cable Splicing - ShakeN'Seal Resin Encapsulation Kits



Underground Splicing CONNECTORS



67020/67022



67024



67026/67028

Wire Type	600 Volts or less				
	Butt or Branch Splice Configuration			Through Splice Configuration	
	67020	67022	67024	67024	67026
	ES137S	ES200S	ES200SV	ES200SV	ES1150
	No. of Conductors (Max.)				
18-16	10	20	14	14	
14-12	6	12	9	9	
10	4	8	6	6	
8	3	6	4	4	4
6	2	2	2	2	3
4	2	2	2	2	2
3	2	2	2	2	2
2	1	2	2	2	2
1	1	2	2	2	2
1/o				2	2
2/o				2	2
3/o				2	2
4/o				2	2

- Exothermic Encapsulating Resin Technology
- Submersible/Direct Burial Rated
- Permanent Watertight Seal Protects Against Voltage Leakage, Cable Deterioration, & Cable Failure
- Fast Error-Proof Setup - Low-Viscosity Resin Compound Penetrates Completely Around Splice
- Fungus Resistant
- Rated for Use with Cable Rated to 90°C
- 600V
- UL 486D CSA 198.2 Listed
- 67028 not UL listed*
- Packed in Protective Foil Bags

CAT. NO.	MODEL NO.	WIRE RANGE	SPLICE TYPE	VOLTAGE	BAG QTY	CASE QTY
67020	ESI37S	#18-#1	BUTT/BRANCH	600	1	50
67022	ES200S	#18-#1	BUTT/BRANCH	600	1	30
67024	ES200SV	#18 - 1, (#18-4/0)	BUTT/BRANCH (IN-LINE)	600	1	25
67026	ESI150	#8-4/0	IN-LINE	600	1	25
67028*	ESI250	1/0-750	IN-LINE	600	1	8

Underground Insulation Piercing Connectors



FIGURE 1



FIGURE 2



FIGURE 3



Before Torquing



After Torquing

Installation Simple, Fast & Reliable
No Cutting or Stripping of Cable Required

- Loosen the shear-head bolt until the ribs are visible & the cable is not obstructed on entry
- Insert the wire into the cable entry port making sure it is fully seated in the back of the connector
- Tighten the bolt with a closed-end wrench or socket until the top shear-head nut breaks off (reusable)
- Check that conductors are secure

- Insulation Piercing - Insulation Displacement Splicing Technology
- Fully Submersible, Completely Waterproof connector for Copper or Aluminum Wire
- Rubber Over-Molded Body ensures the installer does not come into contact with bare metal conductor or the conductive material of the connector
- Double Shear-Head Bolt guarantees correct torque every time, ensuring a quality connection, & eliminating the possibility of hot spots, damaged wires or loose connections
- No cable stripping required, simply insert the jacketed cable into the entry port & tighten with a 1/2" 6 point socket

DIMENSIONS = INCHES

CAT. NO.	FIG	NUMBER OF PORTS	WIRE RANGE	TORQUE IN INCH LB.	BOLT HEAD SIZE	DIMENSIONS IN INCHES			CASE QTY
						H	W	L	
IN-LINE SPLICES									
96141	1	-	#10-1/0	220	3/4	1.50	3.50	6.00	10
96142	1	-	1/0-350 MCM	185	1/2	2.00	3.50	10.00	4
MULTI-PORT STUB SPLICES									
96145	2	4	#6-4/0	220	3/4	6.00	4.00	5.50	9
96143	2	5	1/0-350MCM	220	3/4	6.00	4.00	8.50	6
96144	3	6	(2) @ 2-350 & (4) @ 6-4/0	185	1/2	2.50	4.00	8.40	4

Submersible Insulated Splice Connectors



- Designed for use in Direct Burial & Submersible installations such as hand holes, below grade boxes, in the ground or submersed in water
- Range Taking Design Reduces Inventory
- AL9CU Dual Rated for Copper & Aluminum Conductors
- Insulated with High Dielectric Strength Rubber Compound
- Molded for Precise Fit & supplied with removable access plugs over the hex screws
- Eliminates the need for Taping, Heat Shrink etc.
- Abrasion and Chemical Resistant, will not support combustion
- Meets or exceeds ANSI C119.1 Specifications for a Submersible Connection
- UL Listed for Wet or Damp Locations, Direct Burial & Submersible per UL486D
- Rated 600 Volts, Cold Temperature UL tested to 0°F



DIMENSIONS = INCHES

CAT. NO.	WIRE RANGE AWG	WIRE RANGE (INCHES)	BOLT SIZE	DIMENSIONS (INCHES)			CASE QTY
				H	W	L	
98012	2/0-14	.365-.064	3/16	2.13	0.88	5.50	25
98014	350-12	.58-.08	5/16	3.16	1.44	8.14	50

Submersible Insulated Pedestal Connectors

- Designed for use in Direct Burial & Submersible installations such as hand holes, below grade boxes, in the ground or submersed in water
- Range Taking Design Reduces Inventory
- Dual Rated for Copper & Aluminum Conductors
- Insulated with High Dielectric Strength Rubber Compound
- Molded for Precise Fit & supplied with removable access plugs over the hex screws
- Eliminates the need for Taping, Heat Shrink etc.
- Abrasion and chemical resistant, Will not support combustion
- Meets or exceeds ANSI C119.1 Specifications for a Submersible Connection
- Rated 600 Volts, Cold Temperature UL tested to 0°F



DIMENSIONS = INCHES

CAT. NO.	NUMBER OF PORTS	WIRE RANGE AWG	WIRE RANGE	BOLT SIZE	DIMENSIONS (INCHES)			CASE QTY
					H	W	L	
98023	3	350-12	.58"-.08"	5/16	2.46	4.06	3.63	25
98024	4	350-12	.58"-.08"	5/16	2.46	4.06	4.75	20
98026	6	350-12	.58"-.08"	5/16	2.46	4.06	7.00	20
98033	3	600-12	.89"-.08"	5/16	3.13	5.46	4.87	12
98034	4	600-12	.89"-.08"	5/16	3.13	5.46	6.56	12
98036	6	600-12	.89"-.08"	5/16	3.13	5.46	9.94	6
98038	8	600-12	.89"-.08"	5/16	3.13	5.46	13.31	4

Submersible Insulated Streetlighting Connectors



- Designed for use in Direct Burial & Submersible Streetlighting applications such as hand holes, below grade boxes, in ground or water
- Range Taking Design Reduces Inventory
- AL9CU Dual Rated for Copper & Aluminum Conductors
- Insulated with High Dielectric Strength Rubber Compound
- Molded for Precise Fit & supplied with removable access plugs over the hex screws
- Eliminates the need for Taping, Heat Shrink etc.
- Abrasion and chemical resistant, will not support combustion
- Meets or exceeds ANSI C119.1 Specifications for a Submersible Connection
- UL Listed for Wet Locations, Direct Burial & Submersible per UL486D
- Rated 600 Volts, Cold Temperature UL tested to 0°F

CAN BE USED FOR ANY TYPE OF SPLICE

DIMENSIONS = INCHES

CAT. NO.	FIG	NUMBER OF PORTS	WIRE RANGE AWG	WIRE RANGE (INCHES)	BOLT SIZE	DIMENSIONS (INCHES)			CASE QTY
						H	W	L	
98042	1	2	2/0-14	.365-.064	3/16	2.13	2.75	1.80	40
98043	1	3	2/0-14	.365-.064	3/16	2.13	2.75	2.65	25
98044	1	4	2/0-14	.365-.064	3/16	2.13	2.75	3.49	25
98046	1	6	2/0-14	.365-.064	3/16	2.13	2.75	5.17	25
98052	2	3	2/0-14	.365-.064	3/16	2.13	4.25	2.65	25



FIG 1



FIG 2



CONNECTORS

Underground Splicing



Streetlighting In-line Mechanical Break-Away Disconnect Kits



67064 FUSIBLE



67065 NON-FUSED

- Break-Away Design Separates Under Tension so wires don't break
- Ensures a Fully Insulated, Watertight and Submersible connection
- Fuse or Connecting Link stays in load side when separated
- Approved for a wide range of Aluminum or Copper conductors
- Accommodates Insulated Wire up to .38" Diameter
- Accepts Standard Cartridge Fuses 13/32" X 1-1/2" - No Glass Fuses
- 30A 600V Max

Kit Includes:
 EPDM Rubber Housing, Fuse Clips,
 Connecting Link (as Required),
 Silicone Lubricant. Fuse Not Included.

DIMENSIONS = INCHES

CAT. NO.	FUSED/ NON-FUSED	WIRE RANGE RUN	WIRE RANGE TAP	DIMENSIONS (INCHES)		CASE QTY
				DIA.	L	
67064	FUSED	#12-#4	#12-#4	1-1/16	5-3/8	25
67065	NON-FUSED	#12-#4	#12-#4	1-1/16	5-3/8	25

Streetlighting Y-Type Mechanical Break-Away Disconnect Kits



67066 FUSIBLE



67067 NON-FUSED

- Break-Away Design Separates Under Tension so wires don't break
- Ensures a Fully Insulated, Watertight and Submersible connection
- Fuses or Connecting Link stay in load side when separated
- Approved for a wide range of Aluminum or Copper conductors
- Accommodates Insulated Wire up to .78" Dia.(Run) .38" Dia.(Tap)
- Accepts Standard Cartridge Fuses 13/32" X 1-1/2" - No Glass Fuses
- 30A 600V Max

Kit Includes:
 EPDM Rubber Housing, Fuse Clips,
 Connecting Link (as Required),
 Silicone Lubricant. Fuse Not Included.

DIMENSIONS = INCHES

CAT. NO.	FUSED/ NON-FUSED	WIRE RANGE RUN	WIRE RANGE TAP	DIMENSIONS (INCHES)		CASE QTY
				DIA.	L	
67066	FUSED	#14-#2	#12-#4	1-5/8"	9-3/4"	25
67067	NON-FUSED	#14-#2	#12-#4	1-5/8"	9-3/4"	10

Y-Type Mechanical Streetlighting Kit



- Underground Mechanical Streetlight Splice Kit
- Watertight, Submersible & Re-Enterable
- Approved for use with aluminum or copper conductors
- Ensures a fully insulated, water-tight repair splice - no taping, heat shrink or mastic required
- Includes AL9CU Aluminum Connector

Kit Includes:
 EPDM Rubber Housing, Fuse Clips,
 Connecting Link (as Required),
 Silicone Lubricant

DIMENSIONS = INCHES

CAT. NO.	KIT TYPE	WIRE RANGE COPPER	WIRE RANGE ALUMINUM	CONNECTOR HEX SIZE	DIMENSIONS (INCHES)		CASE QTY
					DIA.	L	
67062	Y TYPE	#14-#4	#14-#2	3/16"	1-5/8"	6-3/4"	25

UF Direct Burial Splice Kits - Heat Shrink



- Labor savings - simplifies splicing UF cable by obsoleting messy multi part splicing kits. Seal with heat gun or torch
- Provides a reliable, moisture proof electrical connection for UF cable
- 14/3 or 12/3 minimum to 8/3 maximum
- 67000 comes complete with one 4-position brass connector and one 8" piece of adhesive/sealant lined heat shrink tubing
- 67001 comes complete with 11-1/2" connector and one 20" piece of water impervious adhesive/sealant heat shrink tubing
- UL486D Listed Submersible & Raintight, 600 Volt 221°F (105°C)



CAT. NO.	FIG	DESCRIPTION	BAG QTY
67000	1	14-8 AWG UF DIRECT BURIAL SPLICE KIT	1
67001	2	14-8 AWG UF DIRECT BURIAL STRETCHER SPLICE KIT	1

Direct Burial UF In-Line Splice Kit - EPDM Rubber Cover

- Perfect for 14/2, 14/3, 12/2, 12/3, 10/2, 10/3 UF Cable Applications
- No Taping, Mixing, Mastics or Heat Gun Required
- Specially designed UF Adaptor Opening Molded into Cover
- Waterproof, Submersible & Re-Enterable, UV Resistant
- Connector Included



DIMENSIONS = INCHES

CAT. NO.	WIRE RANGE	CONNECTOR (INCHES)		COVER (INCHES)		CASE QTY
		DIA.	L	DIA.	L	
67056	14/2-10/3	.86	1.81	1.63	8.31	5

Direct Burial Dual Rated Splice Kits - Heat Shrink

- Eliminates Expensive Crimping Tools when Splicing Aluminum or Copper Conductors for Direct Burial
- Kit comes complete with one mechanical connector and one piece of heat shrink tubing
- For Repair and/or Extending type USE or Other Electrical Cable
- Seal with Heat Gun or Torch
- UL Listed Components, 600 Volt Maximum 221°F (105°C) Rating



CAT. NO.	FIG	DESCRIPTION	BAG QTY
67002	1	8-2 AWG DUAL RATED BUTT SPLICE	1
67004	1	6-1/0 AWG DUAL RATED BUTT SPLICE	1
67003	1	8-2/0 AWG DUAL RATED BUTT SPLICE	1
67005	1	3/0-250MCM AWG DUAL RATED BUTT SPLICE	1
67006	2	3/0-250MCM AWG DUAL RATED BUTT SPLICE	1

FIG 1 FIG 2

Direct Burial Mechanical Splice Kits - EPDM Rubber Cover

- Prevents oxidation and keeps out moisture
- Approved for use with Aluminum or Copper Conductors
- Perfect for repairing any 2, 3, or 4-wire installation
- Direct Burial & Submersible - Ensure a fully insulated, Water-tight Splice Repair - No taping or Heat Shrink or mastic required
- 600V, Meets or Exceeds CH9.4, RUS Accepted



DIMENSIONS = INCHES

CAT. NO.	WIRE RANGE AWG	SCREW CONFIGURATION	CONNECTOR (INCHES)		COVER (INCHES)		CASE QTY
			DIA.	L	DIA.	L	
67058	#6-350 MCM	2 SCREW	1.13	2.56	1.55	10.45	25
67060	#6-350 MCM	4 SCREW	1.13	4.06	1.55	10.45	25

Direct Burial Splice Covers - EPDM Rubber

- For Direct Burial, Underground Vault, Overhead Service Splices
- Approved for Aluminum or Copper Conductors, Connector Not Included
- Ensures a Fully Insulated, Water-Tight Repair Splice - No Taping, Heat Shrink or Mastic Required, 600V, REA Approved



DIMENSIONS = INCHES

CAT. NO.	WIRE RANGE AWG	WIRE RANGE DIAMETER	*DIMENSIONS (INCHES)		CASE QTY
			DIA.	L	
67052	#14-2/0	.15-.60	1.01	5.97	250
67053	#14-350	.15-.98	1.27	8.25	100

Thin Wall Heat Shrink Tubing - 6" length



CONNECTORS

Heat Shrink



- Flexible Polyolefin Heat Shrink Tubing
- 2:1 Shrink Ratio
- 600 Volt
- 257°F (125°C) Continuous Operation
- For Insulating, Wire Harness, Wire Bundling, Splicing & Terminations
- UL 224 Recognized

DIMENSIONS = INCHES

CAT NO.	LENGTH	COLOR	DIAMETER BEFORE SHRINKING	DIAMETER AFTER SHRINKING	BAG QTY
68030	6"	BLACK	.078	.029	50
68032	6"	BLACK	.098	.039	50
68034	6"	BLACK	.137	.059	50
68036	6"	BLACK	.211	.098	10
68038	6"	BLACK	.250	.117	10
68040	6"	BLACK	.367	.176	10
68042	6"	BLACK	.484	.234	10
68044	6"	BLACK	.827	.390	10
68046	6"	BLACK	1.26	.590	10
68322	6"	CLEAR	.078	.029	50
68323	6"	CLEAR	.098	.039	50
68324	6"	CLEAR	.137	.059	50
68325	6"	CLEAR	.211	.098	10
68326	6"	CLEAR	.250	.117	10
68327	6"	CLEAR	.367	.176	10
68328	6"	CLEAR	.484	.234	10
68329	6"	CLEAR	.827	.390	10
68331	6"	RED	.078	.029	50
68332	6"	RED	.098	.039	50
68333	6"	RED	.137	.059	50
68334	6"	RED	.211	.098	10
68335	6"	RED	.250	.117	10
68336	6"	RED	.367	.176	10
68337	6"	RED	.484	.234	10
68338	6"	RED	.827	.390	10
68339	6"	RED	1.26	.590	10
68340	6"	GREEN	.078	.029	50
68341	6"	GREEN	.098	.039	50
68342	6"	GREEN	.137	.059	50
68343	6"	GREEN	.211	.098	10
68344	6"	GREEN	.250	.117	10
68345	6"	GREEN	.367	.176	10
68346	6"	GREEN	.484	.234	10
68347	6"	GREEN	.827	.390	10
68348	6"	GREEN	1.26	.590	10
68349	6"	WHITE	.078	.029	50
68350	6"	WHITE	.098	.039	50
68351	6"	WHITE	.137	.059	50
68352	6"	WHITE	.211	.098	10
68353	6"	WHITE	.250	.117	10
68354	6"	WHITE	.367	.176	10
68355	6"	WHITE	.484	.234	10
68356	6"	WHITE	.827	.390	10
68357	6"	WHITE	1.26	.590	10
68358	6"	BLUE	.078	.029	50
68359	6"	BLUE	.098	.039	50
68360	6"	BLUE	.137	.059	50
68361	6"	BLUE	.211	.098	10
68362	6"	BLUE	.250	.117	10
68363	6"	BLUE	.367	.176	10
68364	6"	BLUE	.484	.234	10
68365	6"	BLUE	.827	.390	10
68366	6"	BLUE	1.26	.590	10

Thin Wall Heat Shrink Tubing - 4' Length

- Flexible Polyolefin Heat Shrink Tubing
- 2:1 Shrink Ratio
- 600 Volt
- 257°F (125°C) Continuous Operation
- For Insulating, Wire Harness, Wire Bundling, Splicing & Terminations
- UL 224 Recognized



DIMENSIONS = INCHES

CAT NO.	LENGTH	COLOR	DIAMETER BEFORE SHRINKING	DIAMETER AFTER SHRINKING	BAG QTY
68072	4 FT	BLACK	.078	.029	1
68074	4 FT	BLACK	.098	.039	1
68076	4 FT	BLACK	.137	.059	1
68078	4 FT	BLACK	.211	.098	1
68080	4 FT	BLACK	.250	.117	1
68082	4 FT	BLACK	.367	.176	1
68084	4 FT	BLACK	.484	.234	1
68086	4 FT	BLACK	.827	.390	1
68088	4 FT	BLACK	1.26	.590	1
68382	4 FT	CLEAR	.078	.029	1
68383	4 FT	CLEAR	.098	.039	1
68384	4 FT	CLEAR	.137	.059	1
68385	4 FT	CLEAR	.211	.098	1
68386	4 FT	CLEAR	.250	.117	1
68387	4 FT	CLEAR	.367	.176	1
68388	4 FT	CLEAR	.484	.234	1
68389	4 FT	CLEAR	.827	.390	1
68391	4 FT	RED	.078	.029	1
68392	4 FT	RED	.098	.039	1
68393	4 FT	RED	.137	.059	1
68394	4 FT	RED	.211	.098	1
68395	4 FT	RED	.250	.117	1
68396	4 FT	RED	.367	.176	1
68397	4 FT	RED	.484	.234	1
68398	4 FT	RED	.827	.390	1
68399	4 FT	RED	1.26	.590	1
68400	4 FT	GREEN	.078	.029	1
68401	4 FT	GREEN	.098	.039	1
68402	4 FT	GREEN	.137	.059	1
68403	4 FT	GREEN	.211	.098	1
68404	4 FT	GREEN	.250	.117	1
68405	4 FT	GREEN	.367	.176	1
68406	4 FT	GREEN	.484	.234	1
68407	4 FT	GREEN	.827	.390	1
68408	4 FT	GREEN	1.26	.590	1
68409	4 FT	WHITE	.078	.029	1
68410	4 FT	WHITE	.098	.039	1
68411	4 FT	WHITE	.137	.059	1
68412	4 FT	WHITE	.211	.098	1
68413	4 FT	WHITE	.250	.117	1
68414	4 FT	WHITE	.367	.176	1
68415	4 FT	WHITE	.484	.234	1
68416	4 FT	WHITE	.827	.390	1
68417	4 FT	WHITE	1.26	.590	1
68418	4 FT	BLUE	.078	.029	1
68419	4 FT	BLUE	.098	.039	1
68420	4 FT	BLUE	.137	.059	1
68421	4 FT	BLUE	.211	.098	1
68422	4 FT	BLUE	.250	.117	1
68423	4 FT	BLUE	.367	.176	1
68424	4 FT	BLUE	.484	.234	1
68425	4 FT	BLUE	.827	.390	1
68426	4 FT	BLUE	1.26	.590	1

CONNECTORS Heat Shrink

A40

Thin Wall Heat Shrink Tubing - Reels



Heat Shrink CONNECTORS



- Flexible Polyolefin Heat Shrink Tubing
- 2:1 Shrink Ratio
- 600 Volt
- 257°F (125°C) Continuous Operation
- For Insulating, Wire Harness, Wire Bundling, Splicing & Terminations
- Various Reel Lengths
- UL 224 Recognized

DIMENSIONS = INCHES

CAT NO.	LENGTH	COLOR	DIAMETER BEFORE SHRINKING	DIAMETER AFTER SHRINKING	BAG QTY
68050	660 FT	BLACK	.078	.029	1 ROLL
68052	660 FT	BLACK	.098	.039	1 ROLL
68054	660 FT	BLACK	.137	.059	1 ROLL
68056	330 FT	BLACK	.211	.098	1 ROLL
68058	330 FT	BLACK	.250	.117	1 ROLL
68060	165 FT	BLACK	.367	.176	1 ROLL
68062	165 FT	BLACK	.484	.234	1 ROLL
68064	165 FT	BLACK	.827	.390	1 ROLL
68066	165 FT	BLACK	1.26	.590	1 ROLL

Thin Wall Heat Shrink Tubing - Kits



68320



68321

DIMENSIONS = INCHES

CAT. NO.	KIT TYPE	CONTENTS				TOTAL PIECES
		LENGTH	COLOR	DIAMETER BEFORE SHRINKING	DIAMETER AFTER SHRINKING	
COLORED KIT						
68320	COLORED KIT	1.375	(5)RED, (5)BLUE, (5)WHITE, (5)YELLOW	.078	.029	20
		1.375	(5)RED, (5)BLUE, (5)WHITE, (5)YELLOW	.098	.039	20
		1.375	(5)RED, (5)BLUE, (5)WHITE, (5)YELLOW	.137	.059	20
		1.375	(5)RED, (5)BLUE, (5)WHITE, (5)YELLOW	.212	.098	20
		2.953	(3)RED, (2)BLUE, (3)WHITE, (2)YELLOW	.251	.117	10
		2.953	(1)RED, (2)BLUE, (1)WHITE, (1)YELLOW	.370	.176	5
		2.953	(1)RED, (2)BLUE, (1)WHITE, (1)YELLOW	.488	.236	5
BLACK KIT						
68321	BLACK KIT	1.375	(20)BLACK	.078	.029	20
		1.375	(20)BLACK	.098	.039	20
		1.375	(20)BLACK	.137	.059	20
		1.375	(20)BLACK	.212	.098	20
		2.953	(10)BLACK	.251	.117	10
		2.953	(5)BLACK	.370	.176	5
		2.953	(5)BLACK	.488	.236	5

A41

Cold Shrink

- Submersible Rated for Cable Jacket Repair & Splicing
- Conforms to ANSI C119.1 1986
- Silicone Rubber Jacketing Material
- Durable Tear Resistant Removable Rip-Cord Core
- 1000V Rated for Primary Insulation
- UV Resistant



DIMENSIONS = INCHES

CAT. NO.	CONDUCTOR RANGE	APPLICATION RANGE	LENGTH	VOLTAGE	BAG QTY	CASE QTY
68302	#2-1/0	0.37-0.57	8	1000	1	10
68304	2/0-400	0.57-1.35	9	1000	1	10
68306	500-800	0.97-1.95	9	1000	1	10
68308	500-800	0.97-1.95	12	1000	1	10
68310	900-1000	1.32-2.65	9	1000	1	10
68312	1250-2000	1.63-3.67	9	1000	1	10

Heat Shrink End Caps

- Simple & effective method for sealing cable ends, pipe & conduit
- Superior Resistance to Weathering, Moisture Contamination, Adverse Environmental Conditions & Common Fluid/Solvents
- Adhesive Liner provides complete environmental protection & insulation
- Heat Indicating Lines
- Continuous Operating Temperature -67°F to 230°F (-55°C to 110°C)
- Rated to 1KV 194°F (90°C) Continuous Use
- UL486D - Shrink Temperature of 248°F (120°C)
- Black Color



DIMENSIONS = INCHES

CAT. NO.	CABLE RANGE	LENGTH	DIAMETER BEFORE SHRINKING	DIAMETER AFTER SHRINKING	WALL THICKNESS
68232	2-4/0	3.5	.75	.22	.08
68234	300-1000MCM	4.0	1.30	.40	.08
68236	500-1500MCM	4.5	1.50	.50	.08
68238	900-2500MCM	4.5	2.05	.75	.08
68240	2000-2500MCM	5.0	2.75	1.00	.08

Medium Wall Heat Shrink Tubing - 3:1 Shrink Ratio



DIMENSIONS = INCHES

CAT. NO.	CABLE RANGE	LENGTH	DIAMETER BEFORE SHRINKING	DIAMETER AFTER SHRINKING	WALL THICKNESS
68112	12-6	4 FT	.40	.15	.080
68114	8-1/0	4 FT	.75	.22	.080
68116	2-4/0	4 FT	1.10	.40	.080
68118	-	4 FT	1.30	.40	.080
68120	3/0-400	4 FT	1.50	.50	.080
68122	-	4 FT	1.70	.50	.080
68124	250-750	4 FT	2.05	.75	.080
68126	-	4 FT	2.75	1.00	.080
68128	800-1250	4 FT	3.50	1.18	.095
68130	1500-2500	4 FT	4.70	1.57	.105
68132	-	4 FT	6.70	2.30	.110
ROLLS					
68142	12-6	50 FT	.40	.15	.080
68144	8-1/0	25 FT	.75	.22	.080
68146	2-4/0	25 FT	1.10	.40	.080
68148	3/0-400	50 FT	1.50	.50	.080
68150	-	50 FT	1.70	.50	.080
68152	250-750	25 FT	2.05	.75	.080
68154	800-1250	25 FT	3.50	1.18	.095
68156	1500-2500	50 FT	4.70	1.57	.105



- 3:1 Shrink Ratio
- Suitable for Electrical and Mechanical Applications where Lighter Weight and Flexibility are Important
- Seals and Protects Cable Splices and Terminations
- High Resistance to Impact and Abrasion
- 4' Lengths have Adhesive Liner for Complete Environmental Protection and Insulation
- Continuous Operating Temperature: -67°F to 230°F (-55°C to 110°C)
- Shrink Temperature: 248°F (120°C)
- Rated for 600-2500V
- UL486D
- Black Color



Heavy Wall Heat Shrink Tubing



DIMENSIONS = INCHES



- 3:1 Shrink Ratio
- Provides maximum reliability for insulating and protection of cable joints and terminations
- Withstands Severe Mechanical Requirements of U.R.D. Submersible and Direct Burial Installations
- High Impact, Abrasion, Corrosion and Chemical Resistance
- Rated for 600-2500V, 90°C Continuous Use
- 4 FT Lengths have Thermoplastic Adhesive Liner
- Provides Complete Environmental Protection and Insulation
- Meets: UL 486D, CSA C22.2 No. 198.2, ANSI C119.1, Western Underground Guide Numbers 2.4, 2.5, ICEA and NEMA insulation thickness Standard
- Continuous operating temperature: -67°F to 230°F
- Shrink temperature: 248°F (120°C)
- Heavy Wall holds better mechanically & has better underground protection than medium wall
- Black color

CAT. NO.	CABLE RANGE	LENGTH	DIAMETER BEFORE SHRINKING	DIAMETER AFTER SHRINKING	WALL THICKNESS
68162	#14-#10	4 FT	0.35	0.12	.07
68164	#8-#6	4 FT	0.51	0.16	.09
68166	#6-#2	4 FT	0.75	0.24	.09
68168	#1-#3/0	4 FT	1.10	0.35	.12
68170	2/0-350	4 FT	1.50	0.47	.16
68172	250-500	4 FT	2.00	0.63	.16
68174	600-1000	4 FT	2.70	0.87	.16
68176	800-1250	4 FT	3.54	1.18	.16
68178	1500-2500	4 FT	4.72	1.57	.17
ROLLS					
68182	#14-#10	25 FT	0.35	0.12	.07
68186	#6-#2	25 FT	0.75	0.24	.09
68188	#1-#3/0	25 FT	1.10	0.35	.12
68190	2/0-350	25 FT	1.50	0.47	.16
68192	250-500	25 FT	2.00	0.63	.16
68194	600-1000	25 FT	2.70	0.87	.16
68196	800-1250	25 FT	3.54	1.18	.16

Heavy Wall Heat Shrink Tubing - Flame Retardant



- 3:1 Shrink Ratio allows Various Shapes & Contours to be Accommodated
- Insulates & Protects Electrical Splices & terminations where maximum flame retardants is required
- Adhesive sealant liner provides complete environmental protection and insulation

- High impact and abrasion resistance capable of withstanding severe mechanical abuse in Submersible and Direct Burial installations
- Will Not Split or Rupture during installation
- Flame Retardant
- Meets: UL 486D, CSA C22.2 No. 198.2, ANSI C119.1, Western Underground Guides Nos. 2.4, 2.5, MIL-DTL-23053/15, IEEE 383 Vertical Flame Test, ANSI C37.20.2, ICEA S-19-8 and NEMA insulation thickness requirements
- Rated for 1KV, 90°C continuous use
- Continuous operating temperature: -67°F to 230°F (-55°C to 110°C)
- Shrink temperature: 248°F (120°C)
- Black color

DIMENSIONS = INCHES

CAT. NO.	CABLE RANGE	LENGTH	DIAMETER BEFORE SHRINKING	DIAMETER AFTER SHRINKING	WALL THICKNESS	BAG QTY
68004	1-8 AWG	6 IN	0.40	0.13	.09	10
68008	6-2 AWG	6 IN	0.75	0.24	.09	10
68011	1-3/0 AWG	8 IN	1.10	0.35	.12	5
68012	1-3/0 AWG	12 IN	1.10	0.35	.12	1
68015	2/0-350 MCM	8 IN	1.50	0.47	.16	4
68020	250-500 MCM	12 IN	2.00	0.63	.16	1
4 FT LENGTHS						
68022	12-8 AWG	4 FT	0.40	0.13	.09	1
68023	6-2 AWG	4 FT	0.75	0.24	.09	1
68024	1-3/0 AWG	4 FT	1.10	0.35	.12	1
68025	2/0-350 MCM	4 FT	1.50	0.47	.16	1
68026	250-500 MCM	4 FT	2.00	0.63	.16	1