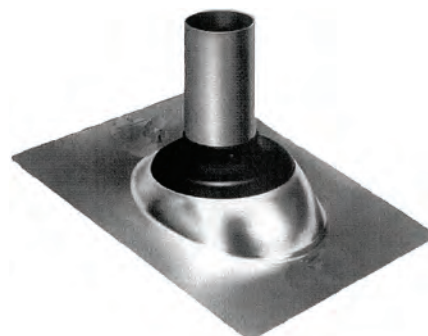
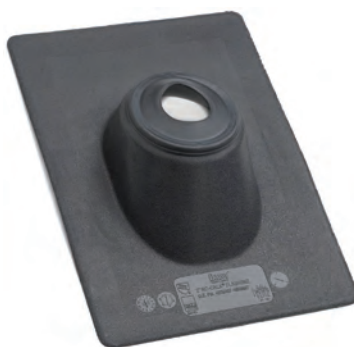
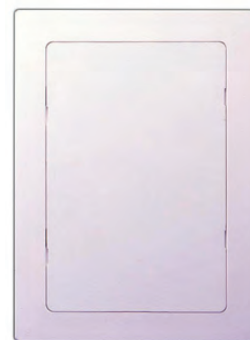


# CEMENTS & ROOF FLASHING

J1 - J7



# High Viscosity Regular Bodied 303 Series Clear Cements



- Regular Bodied Clear Cement for PVC pipe and fittings up to 4" diameter for Sch. 40 pipe & up to 2" for Sch. 80 with interference fit
- Recommended application temperature 40°F to 110°F
- Sets up Quickly
- Low-Voc Compliant, Meets ASTM-D2564

CAT. NO.	SIZE	CASE QTY	WT/CASE
G30366S	1/4 PT.	24	9
G30356S	1/2 PT.	24	16
G30346S	1 PT.	24	27
G30336S	1 QT.	12	26
G30324	1 GAL.	6	52

# Medium Bodied 404 Series Clear Cements



- Medium Bodied Clear Cement for PVC pipe and fittings up to 6" diameter for Sch. 40 and Sch. 80
- Recommended application temperature 40°F to 110°F
- Low-Voc Compliant, Meets ASTM-D2564

CAT. NO.	OLD CAT. NO.	SIZE	CASE QTY	WT/CASE
G31017	G40466S	1/4 PT.	24	9
G40456S		1/2 PT.	24	16
G40446S		1 PT.	24	27
G40436S		1 QT.	12	26
G1224	G40424	1 GAL.	6	52

# High Viscosity Medium Bodied 403 Series Gray Cements



- Medium Bodied Gray Cement for PVC pipe and fittings up to 6" diameter for Sch. 40 and Sch. 80 Conduits
- Recommended application temperature 40°F to 110°F
- Low-Voc Compliant, Meets ASTM-D2564

CAT. NO.	SIZE	CASE QTY	WT/CASE
G40336S	1 QT.	12	26
G40324	1 GAL.	6	52

# Heavy Bodied 204 Series Clear Cements

- Heavy Bodied very High Strength clear industrial cement for High Pressure, Large Diameter and Critical Applications
- For PVC pipe and fittings up to 12" diameter Sch. 40 & Sch. 80
- Heavy-Duty Bond
- Thick Formula fills gaps in large diameter pipe and loose fitting joints
- Slow Dry Time in High Temp applications
- Recommended application temperature 40°F to 110°F
- Low-Voc Compliant



CAT. NO.	OLD CAT. NO.	SIZE	CASE QTY	WT/CASE
G1536S	G20436S	1 QT.	12	26
G1524	G20424	1 GAL.	6	52

# Polar-Weld 2600 Series - Fast Set - All Weather - Clear Cements

- Medium Bodied Clear Cement for PVC pipe and fittings up to 6" diameter for Sch. 40 and Sch. 80
- Formulated for fast initial set-up at temperatures down to -15°F to 110°F
- Low-Voc Compliant, Meets ASTM-D2564



CAT. NO.	SIZE	CASE QTY	WT/CASE
G2656S	1/2 PT.	24	16
G2646S	1 PT.	24	27
G2636S	1 QT.	12	26
G2624	1 GAL.	6	52

**QUICK SET  
COLD WEATHER**

# Plumb-Tite 2000 Series - Fast Set - Wet Application Cements

- Medium Bodied Blue Cement for PVC pipe and fittings up to 6" dia. Sch. 40 and Sch. 80
- Very Fast Setting Cement formulated for Wet Conditions and/or quick Pressurization and Fast Installation
- Blue Cement Fades to clear in sunlight
- Recommended application temperature 40° to 110°F
- Also for use on EMT Conduit
- Low-Voc Compliant, Meets ASTM-D2564



CAT. NO.	SIZE	CASE QTY	WT/CASE
G2066S	1/4 PT.	24	9
G2056S	1/2 PT.	24	16
G2046S	1 PT.	24	27
G2036S	1 QT.	12	26
G2024	1 GAL.	6	52

**QUICK SET  
WET CONDITIONS**

## Purple Primers 903 Series



- Purple-Tinted Aggressive Primer for use on PVC pipe and fittings
- Can be used with all schedules and diameters of pipe
- Softens the pipe surface to allow a fast, secure solvent weld
- Low-Voc Compliant, Meets NSF standards where required or specified

CAT. NO.	OLD CAT. NO.	SIZE	CASE QTY	WT/CASE
G30756	G90356S	1/2 PT.	24	14
G90346S		1 PT.	24	25
G90336S		1 QT.	12	24
G90324		1 GAL.	6	45

## Clear Primers 9300 Series



- A Clear Aggressive Primer for use on PVC pipe
- Can be used with all schedules and diameters of pipe
- Softens the pipe in preparation for solvent cement
- Does not apply a purple stain to the conduit
- Low-Voc Compliant, Meets ASTM F-656

CAT. NO.	SIZE	CASE QTY	WT/CASE
G9366S	1/4PT.	24	9
G9356S	1/2 PT.	24	14
G9346S	1 PT.	24	25
G9336S	1 QT.	12	24
G9324	1 GAL.	6	45

## Purple Primer/Cleaners 8800 Series



- Purple-Tinted All Purpose Primer/Cleaner for PVC pipe and fittings
- Can be used with all schedules and diameters of pipe
- Less aggressive than clear & purple primer
- Removes surface dirt, grease & grime & softens pipe in preparation for cement
- Low-Voc Compliant

CAT. NO.	SIZE	CASE QTY	WT/CASE
G30796	1 PT.	24	25
G8836S	1 QT.	12	24
G8824	1 GAL.	6	45

## Clear Cleaners 803 Series



- Clear Cleaner for PVC pipe and fittings
- Can be used with all schedules and diameters of pipe
- Flows freely & evaporates quickly
- Fast Acting Cleaner
- Removes surface dirt, grease and grime
- Low-Voc Compliant

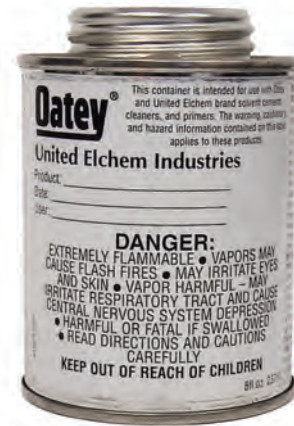
CAT. NO.	OLD CAT. NO.	SIZE	CASE QTY	WT/CASE
G7366S	G80366S	1/4 PT.	24	9
G7356S	G80356S	1/2 PT.	24	14
G7346S	G80346S	1 PT.	24	25
G80336S		1 QT.	12	24
G80324		1 GAL.	6	42

# Solvent Cement and Primer Accessories



- G31305-G30901 Standard replacement cans
- G31309-G31275 Standard replacement daubers, swab applicator & roller specifically sized for cans
- G31300-G31301 Adjustable plastic daubers fit can sizes 1/2" thru quart, designed to adjust to various can dimensions and allows application of the proper amount of cement to ensure a good solvent weld

CAT. NO.	SIZE	CASE QTY	WT/CASE
G31305	1/2 PINT REPLACEMENT CAN	24	7
G31306	PINT REPLACEMENT CAN	24	7
G31307	QUART REPLACEMENT CAN	12	7
G30901	GALLON WIDE MOUTH REPLACEMENT CAN	6	10
G31309	1/2 PINT DAUBER	48	2
G31310	PINT DAUBER	48	2
G31312	QUART DAUBER	48	2
G31276	12" GALLON CAN SWAB APPLICATOR	12	8
G31275	12" GALLON CAN ROLLER APPLICATOR	12	8
G31300	ADJUSTABLE PLASTIC DAUBER W/ 1/2" BALL	48	4
G31301	ADJUSTABLE PLASTIC DAUBER W/ 1" BALL	100	8



## Access Panels

- Provides a service area for electrical, security systems, telephone, TV, computer cables, plumbing, and sprinkler system applications
- Reversible - can be flush mounted or surface mounted, no framing required
- Manufactured from high-impact ABS, White Textured surface
- UV Stabilized for outdoor use
- Can be painted, wallpapered or tiled to match any décor
- Patented clips on panel door & frame eliminates sagging or bowing of door in ceiling applications
- 34055 & 34045 have knockouts to accommodate wires, 1/4" waterlines, etc.



CAT. NO.	SIZE	CASE QTY	WT/CASE
G34055	6" X 9"	6	5
G34045	8" X 8"	6	12
G34056	14" X 14"	6	12
G34044	14" X 29"	6	15



## Electrical Mast Roof Flashing



- Flexible EPDM Rubber Base with Flexible Soft Aluminum Strip designed to seal to most panel configurations and roof pitches regardless of pipe location
- Resists Ozone and UV Light
- One Piece Construction for Fast Installation
- -67°F to +212°F
- IAMPO Cert. No. 3121 Approved for use with Type B Vents
- For use for Shingle Roof Applications
- Not for hot mopped or built up roofs
- Cannot use Petroleum based products or paint on flashing collar or plastic

CAT. NO.	OUTSIDE DIAMETER OF PIPE TO BE FLASHED	BASE		CASE QTY	WT/ CASE
		LENGTH	WIDTH		
G14090	1/4" TO 5-3/8"	15"	15"	4	2

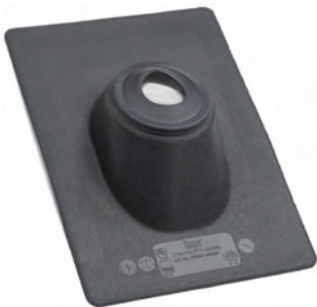
## SIDEFLASH Thermoplastic Self-Seal Wall Flashings



- Designed to seal around piping penetrations through outside walls
- Slips easily over vent pipe - self-sealing to vent pipe surface
- Self-sealing elastomeric collar attached to a durable flexible hard plastic base
- Collar will not crack, chip, peel or separate from base
- Eliminates caulking - prevents moisture intrusion - no sealing compound required
- Absolutely leak-proof & fits most wall constructions
- Seals against air penetration - reduces energy costs
- Prevents bug or vermin intrusion
- Accommodates all vent types - ie: plastic, copper, steel or cast iron

CAT. NO.	OUTSIDE DIAMETER OF PIPE TO BE FLASHED	BASE		CASE QTY	WT/ CASE
		LENGTH	WIDTH		
G12805	1/2" TO 2-1/2"	8"	8.5"	12	4
G12806	3" TO 6"	12"	12.5"	12	7

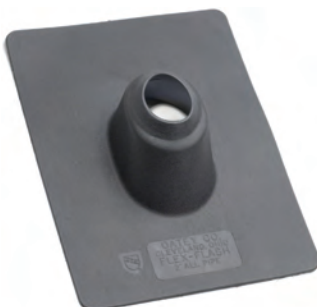
## Thermoplastic Base Self Seal Roof Flashings



- Self-sealing elastomeric collar attached to a sturdy rigid thermoplastic base
- No caulking needed
- Absolutely leak proof
- Slips easily over pipe vent
- Self-sealing to vent pipe surface
- Self-adjusting to roof pitches up to 45°
- Base will not crack or warp
- Accommodates all vent pipe types - ie: plastic, copper, steel, cast iron
- Use in Shingled Roof Applications
- Not for hot mopped or built up roofs

CAT. NO.	OLD CAT. NO.	OUTSIDE DIAMETER OF PIPE TO BE FLASHED	BASE		CASE QTY	WT/ CASE
			LENGTH	WIDTH		
G11908	G14101	1-1/4" TO 1-1/2"	12-7/8"	9-1/4"	12	6
G11909	G14102	2" TO 2-1/2"	12-7/8"	9-1/4"	12	6
G11910	G14103	3"	15"	11-1/4"	12	8
G11911	G14104	4"	16"	12"	12	9

## Rubber Flexible Roof Flashings

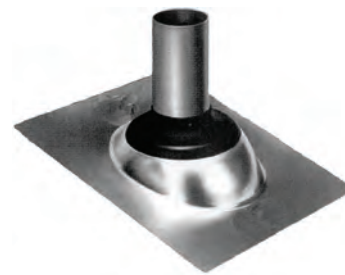


- Roof Flashing slides over vent pipe - accommodates pitch up to 40°
- Commercial or Residential Applications
- Rubber sealing collar seizes the vent pipe with a locking grip preventing leakage
- Accommodates all vent types - ie: plastic, copper, steel or cast iron
- One piece construction molded from military grade elastomer assures long life & all weather protection - will not crack, chip or peel; oil, ozone & UV resistant
- Flexible base conforms to wide range of roof pitches, contours & surfaces
- For use in Shingled Roof or Clay Tile Applications
- Not for use in hot mopped or built up roofs

CAT. NO.	OLD CAT. NO.	OUTSIDE DIAMETER OF PIPE TO BE FLASHED	BASE		CASE QTY	WT/ CASE
			LENGTH	WIDTH		
G14009	G30101	1-1/4" TO 1-1/2"	11-1/4"	8-7/8"	12	6
G14012	G30102	2"	11-1/4"	8-7/8"	12	7
G14025		2-1/2"	11-1/4"	8-7/8"	12	8
G14038	G30103	3"	13-1/4"	9-7/8"	12	9
G14041	G30104	4"	14"	11-1/2"	12	13

# Galvanized Self-Seal Roof Flashings

- Slips easily over DWV vent pipe - self-sealing to vent pipe surface, 40° pitch
- Approved for Type B Installations
- Self-sealing Non-Fading elastomeric collar
- 24 gauge galvanized steel base
- Collar will not crack, chip, peel or separate from aluminum
- Eliminates caulking - no sealing compound required
- Absolutely leak-proof & fits most roof sizes
- Accommodates all vent types - ie: plastic, copper, steel or cast iron
- For use on Shingled Roofs - not for hot mopped or built up Roofs



MADE OF RUST-PROOF, STAMPED  
24 GAUGE GALVANIZED STEEL

GI2209 MULTISIZE  
SIMPLY REMOVE INNER  
RING AT THE INDICATED  
POINT ON COLLAR

CAT. NO.	OLD CAT. NO.	OUTSIDE DIAMETER OF PIPE TO BE FLASHED	BASE		CASE QTY	WT/ CASE
			LENGTH	WIDTH		
GI1830		1/2", 3/4", 1"	9"	12.5"	12	11
GI1840	GI2201	1-1/4" TO 1-1/2"	12.5"	9"	12	12
GI1853	GI2202	2"	12.5"	9"	12	12
GI1866	GI2203	3"	14.5"	11"	12	17
GI1879	GI2204	4"	15"	12"	12	23
GI1871	GI2209	1-1/2", 2", 3"	11"	14.5"	12	23

# AURORA Self-Seal SOLAR Roof Flashings

- Designed to flash around solar mounting systems
- Slips easily over Conduit - self-sealing to conduit surface
- Self-sealing elastomeric tear-out collar
- Collar will not crack, chip, peel or separate from metal base
- Eliminates caulking - no sealing compound required
- Absolutely leak-proof & fits most roof sizes
- Accommodates all conduit types - ie: PVC, Aluminum, steel
- For use in Shingled Roof Applications - not for hot mopped or built up Roofs



CAT. NO.	OUTSIDE DIAMETER OF PIPE TO BE FLASHED	BASE		MATERIAL	CASE QTY	WT/ CASE
		LENGTH	WIDTH			
GI1830	1/2", 3/4", 1"	9"	12.5"	GALVANIZED	12	11
GI1831	1/2", 3/4", 1"	18"	18"	GALVANIZED	12	24
GI1833	1/2", 3/4", 1"	18"	18"	ALUMINUM	12	11
GI2801	1/2" TO 1-1/2"	9.5"	12.5"	GALVANIZED	12	10
GI2802	1/2" TO 1-1/2"	9.5"	12.5"	ALUMINUM	12	6
GI2803	1-1/2" TO 3"	9.5"	12.5"	GALVANIZED	12	10
GI2804	1-1/2" TO 3"	9.5"	12.5"	ALUMINUM	12	6

# Metal Roof Flashings

- Attaches to most corrugated metal decks, aluminum, copper, lead, plastic, fiberglass, etc.
- Applications include plumbing, heating & air conditioning pipes & vents, electrical service entrances, etc.
- Flexible, weather resistant E.P.D.M. resists ozone & UV light
- Pleated cone adjusts to any roof pitch & allows for complete flexibility
- Effectively isolates the pipe from the building movement created by expansion, contraction & vibration
- 30°F to 250°F continuous service temperature range
- Compatible with steel, PVC, copper & sheet metal pipes



CAT. NO.	OUTSIDE DIAMETER OF PIPE TO BE FLASHED	BASE DIAMETER	HEIGHT	CASE QTY	WT/ CASE
GI4741	1/4" TO 2"	4-3/4"	3"	10	2
GI4743	1/4" TO 4"	7-3/4"	4"	5	4



# Electrical Mast Roof Flashing



- Can be used with Corrugated Roofing material, ie: asphalt, plastic, tile, rubber, metal, etc. (not for hot mopped or built-up roofs)
- Self-Sealing Step-Cone Boot made of Premium Grade E.P.D.M. Rubber, which gives it maximum resistance to weathering due to ozone & UV light
- Flexible Aluminum Alloy Aim assures a formed fit and corrosion resistance - excellent for Ribbed Metal Roofs
- Provides a Permanent Seal that is unaffected by expansion/contraction, vibration, ice, snow, hailstones,
- Installs in about 10 minutes
- Excellent for Wall Penetrations - weathertight and airtight, inside or outside
- Easily customized with sharp knife/scissors to accommodate a broad range of diameters
- Slides over vent pipe & conforms to any roof pitch

CAT. NO.	OLD CAT. NO.	OUTSIDE DIAMETER OF PIPE TO BE FLASHED	BASE		CASE QTY	WT/ CASE
			LENGTH	WIDTH		
G16250		1/8" TO 3/4"	2-1/4"	2-1/4"	12	2
G14050	G16251	1/4" TO 2-3/4"	4-1/2"	4-1/2"	6	2
G14051	G16252	7/8" TO 4"	6"	6"	6	3
G14052	G16253	1/4" TO 5-3/4"	8"	8"	6	4

# Retrofit Roof Flashings



- Designed for Applications where Continuous Pipes or Obstructions prevent the use of standard flashings
- Easily installed by wrapping around existing pipe & fastening down onto roof deck
- The Pliable Cone & Stainless Steel Closure can easily be trimmed
- Unique Stainless Steel Closure effectively resists corrosion
- Corrosion-Resistant Aluminum Base can be easily shaped to conform to most roof profiles
- Made of Flexible, Weatherproof E.P.D.M. Rubber Cone, markings in inches & millimeters
- Insulates the pipe from building movement caused by expansion, contraction, & vibration
- -30°F to 250°F continuous service temperature range

CAT. NO.	OUTSIDE DIAMETER OF PIPE TO BE FLASHED	BASE		CASE QTY	WT/ CASE
		LENGTH	WIDTH		
G14751	1/4" TO 4"	8-3/16"	8-3/16"	10	3
G14752	4" TO 9-1/4"	14-1/4"	14-1/4"	5	6
G14753	9-1/4" TO 16-1/4"	21-1/2"	21-1/2"	5	11

# Black Jack® Roof Cement



TRM-1G

TRM-1Q

Black Jack® All-Weather Roof Cement is an asphalt based patching compound designed to repair cracks, splits, seams and holes in roofing materials. It also works great in new construction and in setting flashings, drip edges and roofing material edges.

- Use in wet or dry conditions
- Seals flashings, and other roof projections
- Fiber reinforced
- Thick trowel grade

CAT. NO.	DESCRIPTION	UOM	ORDER MULTIPLE
TRM-1Q	BLACK JACK ALL WEATHER ROOF CEMENT - 10 OZ. TUBE	EA	12
TRM-1Q	BLACK JACK ALL WEATHER ROOF CEMENT - 1 QUART	EA	6
TRM-1G	BLACK JACK ALL WEATHER ROOF CEMENT - 1 GALLON	EA	6