

# BOXES

## STEEL OUTLET E1 - E4



## WEATHER PROOF E5 - E12



## PLASTIC RECESSED BOXES E13



# 4" Square Steel Outlet Boxes

**NEW**

**AVAILABLE**  
APRIL 2020



FIG 1



FIG 2



FIG 3



FIG 4

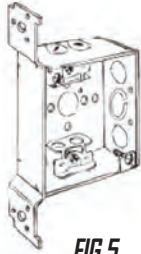


FIG 5



FIG 6



FIG 7

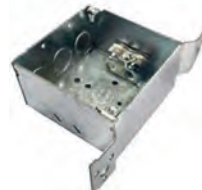


FIG 8

- 4" Square Steel Outlet Boxes
- Drawn Steel Construction
- Used in branch circuit wiring
- Accommodate wiring devices, such as switches and receptacles
- Provide excellent protection for wiring system or devices
- Must be closed with a cover, canopy or wallplate
- Permit access to conductors for maintenance
- Allows for branch circuit runs
- UL 514-A Listed
- CSA C22.2 Listed

DIMENSIONS = INCHES

CAT. NO.	FIG	DESCRIPTION	CU. IN.	KNOCKOUTS	DEPTH	LENGTH	WIDTH	CASE QTY
35829	1	4" SQUARE BOX DRAWN	21	(17) 1/2"	1.5"	4"	4"	50
35831	2	4" SQUARE BOX DRAWN	21	(11) 1/2"; (6) 3/4"	1.5"	4"	4"	50
35832	3	4" SQUARE BOX WELDED	21	(11) 1/2"; (6) K	1.5"	4"	4"	50
35839	4	4" SQUARE BOX WELDED WITH B BRACKET	21	(3) 1/2"; (1) K	1.5"	4"	4"	25
35841	5	4" SQUARE BOX WELDED WITH FM BRACKET	21	(3) 1/2"; (1) K	1.5"	4"	4"	25
<b>4" DEEP (2-1/8") BOXES</b>								
35851	6	4" SQUARE BOX WELDED	30.3	(11) 1/2"; (6) K	2.18"	4"	4"	25
35855	7	4" SQUARE BOX WELDED WITH FLEX CLAMPS	30.3	(5) 1/2"; (2) K	2.18"	4"	4"	25
35857	8	4" SQUARE BOX WELDED WITH TS BRACKET	30.3	(3) 1/2"; (1) K	2.18"	4"	4"	25

# 4-11/16" Steel Outlet Boxes

**NEW**

**AVAILABLE**  
APRIL 2020

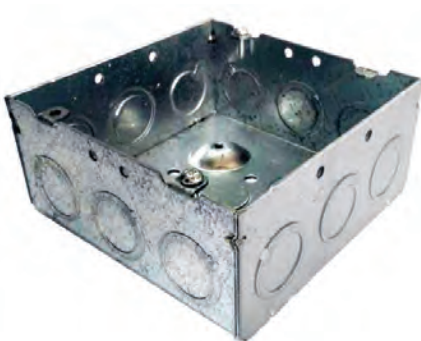


FIG 1



FIG 2



FIG 3

- 4-11/16" Steel Outlet Boxes
- 4-11/16" Boxes are used for a wide variety of industrial applications where larger sized conductors or wiring devices are needed and more volume is required
- Drawn boxes are ideal for exposed work applications (surface mounted wiring)
- Combination screw heads provide for faster installation
- UL 514-A Listed, CSA C22.2 Listed

DIMENSIONS = INCHES

CAT. NO.	FIG	DESCRIPTION	CU. IN.	KNOCKOUTS	DEPTH	LENGTH	WIDTH	CASE QTY
35895	1	4-11/16" SQUARE BOX WELDED	29.5	(3) 1/2"; (2) - 3/4"; (12) K	1.5"	4-11/16"	4-11/16"	25
35896	2	4-11/16" SQUARE BOX WELDED	29.5	(3) 1/2"; (2) - 3/4"; (8) 1"	1.5"	4-11/16"	4-11/16"	25
<b>COVERS</b>								
35900	3	4-11/16" SQUARE FLAT COVER	-	-	1/16"	4-11/16"	4-11/16"	50

# Steel Outlet Box Covers

**NEW**

UL US LISTED



**BOXES**  
Steel Outlet Box Covers



FIG 1



FIG 2



FIG 3



FIG 4



FIG 5



FIG 6



FIG 7

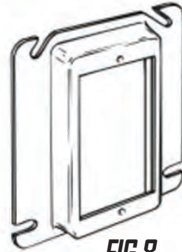


FIG 8



FIG 9



FIG 10



FIG 11



FIG 12



FIG 13

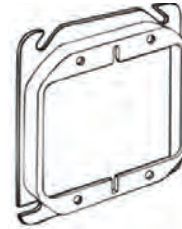


FIG 14



FIG 15



FIG 16

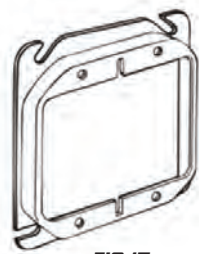


FIG 17



FIG 18

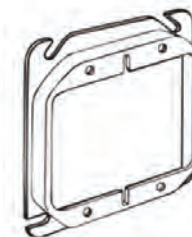


FIG 19

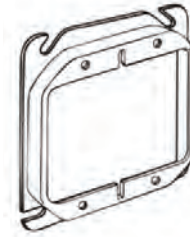


FIG 20

CAT. NO.	FIG	DESCRIPTION	CASE QTY
35858	1	4" SQUARE FLAT COVER - BLANK	50
35859	2	4" SQUARE FLAT COVER - 1/2" K/O	50
35860	3	4" SQUARE RAISED COVER - 1/2" DEEP	50
35861	4	4" SQUARE RAISED COVER - 5/8" DEEP	50
35863	5	4" SQUARE DEVICE & TILE FLAT COVER	50
35864	6	4" SQUARE DEVICE & TILE RAISED COVER - 1/4" DEEP	50
35865	7	4" SQUARE DEVICE & TILE RAISED COVER - 5/8" DEEP	50
35866	8	4" SQUARE DEVICE & TILE RAISED COVER - 3/4" DEEP	50
35867	9	4" SQUARE DEVICE & TILE RAISED COVER - 1" DEEP DRAWN	50
35868	10	4" SQUARE DEVICE & TILE RAISED COVER - 1-1/4" DEEP DRAWN	50
35869	11	4" SQUARE DEVICE & TILE RAISED COVER - 1-1/2" DEEP WELDED	25
35870	12	4" SQUARE DEVICE & TILE RAISED COVER - 1/2" DEEP	50
35871	13	4" SQUARE TWO DEVICE FLAT COVER	50
35872	14	4" SQUARE TWO DEVICE & TILE RAISED COVER 1/4" DEEP DRAWN	50
35873	15	4" SQUARE TWO DEVICE & TILE RAISED COVER 1/2" DEEP DRAWN	50
35874	16	4" SQUARE TWO DEVICE & TILE RAISED COVER 5/8" DEEP DRAWN	50
35875	17	4" SQUARE TWO DEVICE & TILE RAISED COVER 3/4" DEEP DRAWN	50
35876	18	4" SQUARE TWO DEVICE & TILE RAISED COVER 1" DEEP DRAWN	50
35877	19	4" SQUARE TWO DEVICE & TILE RAISED COVER 1-1/4" DEEP DRAWN	50
35878	20	4" SQUARE TWO DEVICE & TILE RAISED COVER 1-1/2" DEEP WELDED	25

# 4" Octagon Steel Outlet Boxes

**NEW**

**AVAILABLE**  
APRIL 2020

**UL** US  
LISTED

Steel Outlet Boxes **BOXES**



FIG 1

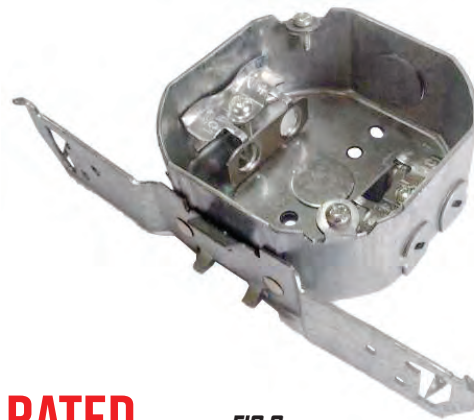


FIG 3

**FIXTURE RATED**



FIG 2



FIG 4

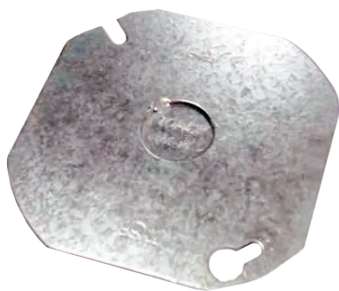


FIG 5

- 4" Octagon Boxes - 1-1/2" Deep
- Fixture Rated
- Used in branch circuit wiring
- Accommodates wiring devices such as switches and receptacles
- Drawn Steel Construction
- Provide excellent protection for wiring system or devices
- Must be closed with a cover, canopy or wallplate
- Permits access to conductors for maintenance
- Allows for branch circuit runs
- UL 514-A Listed
- CSA C22.2 Listed

DIMENSIONS = INCHES

CAT. NO.	FIG	DESCRIPTION	CU IN.	KNOCKOUTS	DEPTH	LENGTH	WIDTH	CASE QTY
35802	1	4" OCTAGON BOX DRAWN	15.5	(9) 1/2"	1.5"	4"	4"	50
35813	2	4" OCTAGON BOX WITH BAR HANGER DRAWN	15.5	(6) 1/2"	1.5"	4"	4"	25
35815	3	4" OCTAGON BOX WITH TS BRACKET DRAWN	15.5	(6) 1/2"	1.5"	4"	4"	50
<b>COVERS</b>								
35823	4	4" OCTAGON COVER - BLANK		-	1/16"	4"	4"	50
35824	5	4" OCTAGON COVER WITH K/O		(1) 1/2"	1/16"	4"	4"	50

# 4" X 2" Handy Boxes

**NEW**

**AVAILABLE**  
APRIL 2020

UL  
LISTED



FIG 1



FIG 2



FIG 3

- 4" x 2" Handy Boxes
- Handy boxes, also known as utility boxes, are used for outlets, as switch boxes or as small junction boxes
- Used in exposed work applications (surface mounted wiring)
- The NEC requires that surface-mounted wiring be enclosed with a protective covering such as EMT conduit

DIMENSIONS = INCHES

CAT. NO.	FIG	DESCRIPTION	CU. IN.	KNOCKOUTS	DEPTH	LENGTH	WIDTH	CASE QTY
35914	1	HANDY BOX DRAWN	13	(8) - 3/4"	1-7/8"	4"	2"	50
35915	2	HANDY BOX WITH RAISED GROUND SCREW DRAWN	13	(10) - 1/2"	1-7/8"	4"	2"	50
35916	3	HANDY BOX WITH TS BRACKET & RAISED GROUND SCREW DRAWN	13	(8) - 1/2"	1-7/8"	4"	2"	50

# 3" X 2" Switch Boxes

**NEW**

**AVAILABLE**  
APRIL 2020

UL  
LISTED



FIG 1



FIG 2



FIG 3

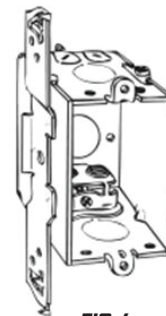


FIG 4



FIG 5

- 3" x 2" Switch Boxes
- Used to house wiring devices such as switches or outlets
- Gangable switch boxes enable construction of a box to hold two or more devices
- Plaster ears allow box to be used in "old work" applications

DIMENSIONS = INCHES

CAT. NO.	FIG	DESCRIPTION	CU. IN.	KNOCKOUTS	DEPTH	LENGTH	WIDTH	CASE QTY
35931	1	SWITCH BOX GANGABLE	12.5	(4) - 1/2"	2-1/2"	3"	2"	50
35932	2	SWITCH BOX GANGABLE WITH NON METALLIC SHEATHED CABLE CLAMPS	12.5	(1) - 1/2"	2-1/2"	3"	2"	50
35933	3	SWITCH BOX GANGABLE WITH LONG BRACKET & CLAMPS	12.5	(1) - 1/2"	2-1/2"	3"	2"	50
35934	4	SWITCH BOX WITH TS BRACKET & CLAMPS	12.5	(3) - 1/2"	2-1/2"	3"	2"	50
35935	5	SWITCH BOX GANGABLE WITH CLAMPS	12.5	(1) - 1/2"	2-1/2"	3"	2"	50

# While-In-Use Weatherproof Covers



In-Use Weatherproof Covers BOXES



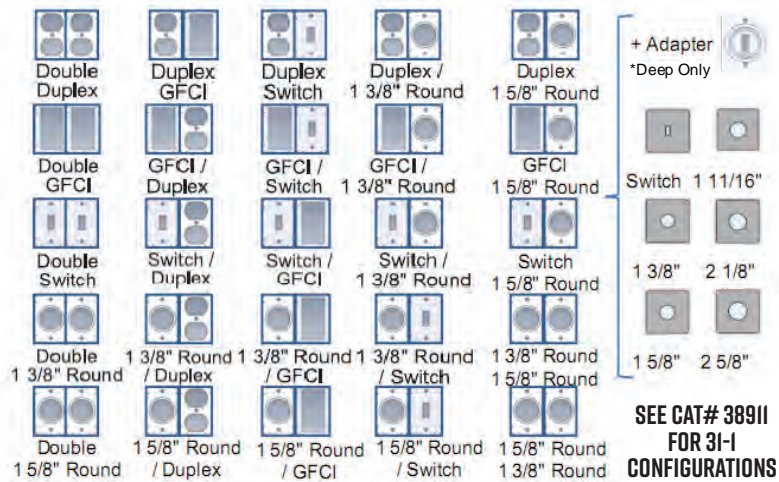
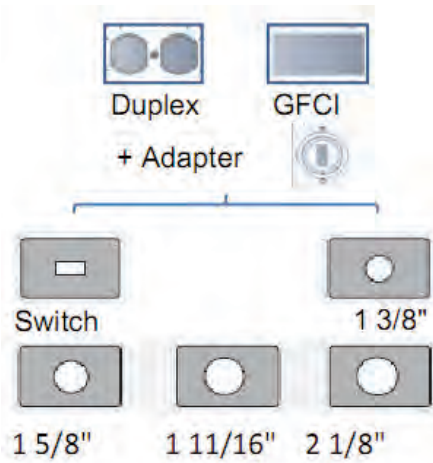
14 IN I



TWO GANG

EXTRA-DUTY RATED  
PER 2014 NEC 406.9(B)(1)  
EXTRA DUTY STD.

31 IN I



- Weatherproof While-in-Use - Complies with NEC 2014 406.9(B)(1) Extra Duty Specifications
- 1 Gang - 14 Device Configurations 2 Gang - 31 Device Configurations
- One Gang Mounts Vertically or Horizontally
- Heavy Duty Hidden Hinge
- Sturdy Polycarbonate Construction - Clear Cover
- Built-In Water Dam Design channels moisture away from interior
- Extra Large Gasketed Cord Flap for Cable Exit - Prevents Ingress of Moisture/Debris
- Lockable Latching Tab secures cover to Prevent Accidental Disconnects
- Pre-Installed Gasket

- Snap-In Device Adapter requires no tools to install
- Easy-To-Assemble building block style adapter provides flexibility and eliminates damage
- NEMA 3R rating for Outdoor
- \*38910 2 Gang Cover will not support center mounted devices  
38910 does not contain all 31 configurations outlined above.  
38910 contains the following device plates:  
2 decorative; 2 duplex, 2 1-3/8" dia. single round KO's only.  
For more configurations, ie. toggle or larger round KO's use Cat# 38911

DIMENSIONS = INCHES

CAT. NO.	DESCRIPTION	DEPTH	LENGTH	WIDTH	CASE QTY
38900	1 GANG	3.20"	5.60"	3.85"	24
38901	1 GANG DEEP	3.75"	5.60"	3.85"	24
38910*	2 GANG	2.75"	4.70"	4.70"	30
38911	2 GANG DEEP	3.65"	5.60"	5.45"	10

# Metal While-In-Use Weatherproof Covers - Die Cast Aluminum



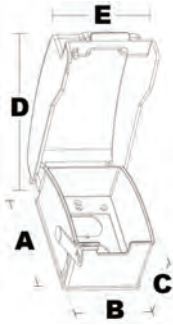
**BOXES**

*In-Use Weatherproof Covers*



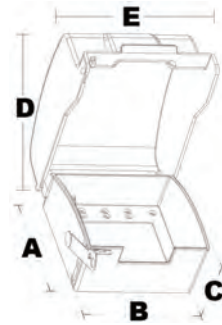
ONE GANG

**7 IN 1**

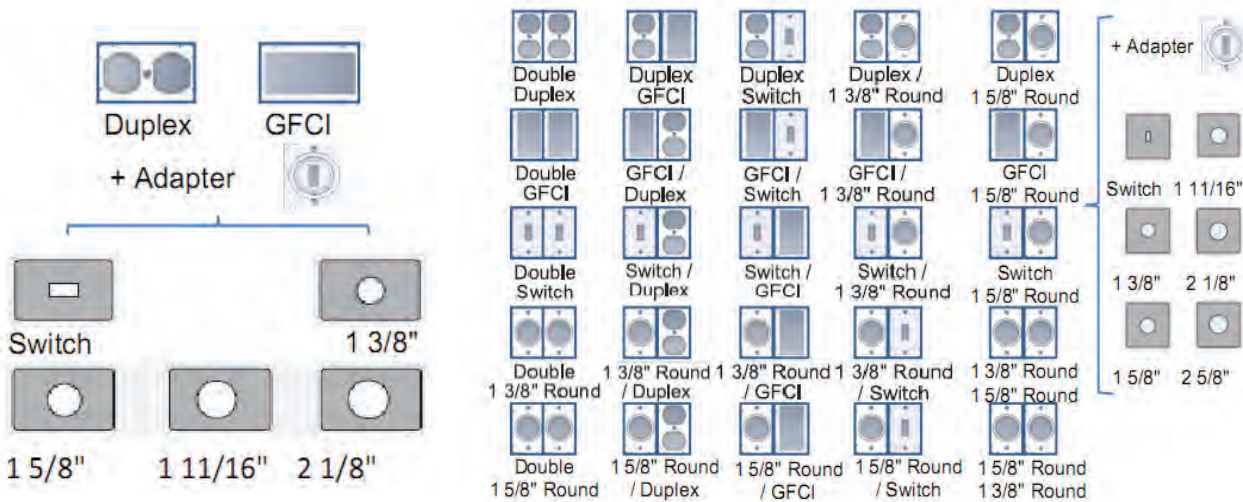


TWO GANG

**31 IN 1**



**EXTRA-DUTY RATED  
PER 2014 NEC 406.9(B)(1)  
EXTRA DUTY STD.**



- Weatherproof While-in-Use - Complies with NEC 2005 406.8 (B)(1) for receptacles in damp or wet locations & 2011 NEC 406.9(B)(1) Extra Duty Standard
- 1 Gang - 7 Device Configurations 2 Gang - 31 Device Configurations
- Patented Cover Adjustable from 2-3/4" Depth to 3-1/2" Depth if Extra Clearance is Required (2 Gang Adjustable from 3-1/2" to 4-1/2" Depth)
- One Gang Covers Can Be Mounted Vertically or Horizontally - See Table Below
- Heavy Duty Reinforced Hidden Hinge - 40lb Force Rating
- Sturdy Die-Cast Aluminum Construction
- Built-In Water Dam Design channels moisture away from interior
- Extra Large Cable Exit - Prevents Ingress of Moisture/Debris
- Lockable Latching Tab secures cover to Prevent Accidental Disconnects
- Pre-Installed Gasket
- Easy-To-Assemble Building Block Style Snap-In Device Adapter requires no tools and provides flexibility and eliminates damage
- NEMA 3R rating
- cULus 514D Listed; NEMA FB-1; Federal Spec. A-A-50563
- Ground Lug Included

DIMENSIONS = INCHES

CAT. NO.	DESCRIPTION	COLOR	DIMENSIONS					CASE QTY
			A	B	C	D	E	
38915	1 GANG - VERTICAL	GRAY	4.60"	3.10"	3.00"	6.80"	3.50"	10
38912	1 GANG - VERTICAL	WHITE	4.60"	3.10"	3.00"	6.80"	3.50"	10
38916	1 GANG - HORIZONTAL	GRAY	4.60"	3.10"	3.00"	6.80"	3.50"	10
38913	1 GANG - HORIZONTAL	WHITE	4.60"	3.10"	3.00"	6.80"	3.50"	10
38917	2 GANG DEEP - VERTICAL	GRAY	4.60"	4.60"	3.20"	6.80"	5.25"	10
38914	2 GANG DEEP - VERTICAL	WHITE	4.60"	4.60"	3.20"	6.80"	5.25"	10

# Weatherproof Boxes



Weatherproof Boxes BOXES

- Includes Closure Plugs
- Detachable Lugs Provided (Except Where Noted)
- Ground Screw Installed
- Reinforced Connector Outlets
- Brackets Secured with Screws
- Seamless Die Cast Aluminum
- Powder Coat Finish
- Individually Packaged



FIG 1



FIG 2



FIG 3



FIG 4

## One Gang - 18.3 Cubic Inch Capacity

Length 4-1/2" X Width 2-3/4" X Depth 2"

DIMENSIONS = INCHES

CAT. NO.	FIG	LUGS	NO. OF OUTLET HOLES	OUTLET HOLE DIA.	NO. OF CLOSURE PLUGS	FINISH	BOX QTY
36000	1	NO LUGS	3	1/2"	2	GRAY	50
36002	1	NO LUGS	3	1/2"	2	WHITE	50
36004	1	NO LUGS	3	1/2"	2	BRONZE	50
36010	1	LUGS	3	1/2"	2	GRAY	50
36012	1	LUGS	3	1/2"	2	WHITE	50
36014	1	LUGS	3	1/2"	2	BRONZE	50
36018	1	NO LUGS	3	3/4"	2	GRAY	50
36020	1	LUGS	3	3/4"	2	GRAY	50
36022	1	LUGS	3	3/4"	2	WHITE	50
36024	1	LUGS	3	3/4"	2	BRONZE	50
36028	2	NO LUGS	4	1/2"	2	GRAY	50
36030	2	LUGS	4	1/2"	2	GRAY	50
36032	2	LUGS	4	1/2"	2	WHITE	50
36034	2	LUGS	4	1/2"	2	BRONZE	50
36040	2	LUGS	4	3/4"	2	GRAY	50
36050	3	LUGS	5	1/2"	2	GRAY	50
36060	3	LUGS	5	3/4"	2	GRAY	50
36070	4	LUGS	5	1/2"	2	GRAY	50
36080	4	LUGS	5	3/4"	2	GRAY	50



FIG 5



FIG 6

## One Gang Deep - 23.8 Cubic Inch Capacity

Length 4-1/2" X Width 2-3/4" X Depth 2-5/8"

DIMENSIONS = INCHES

CAT. NO.	FIG	LUGS	NO. OF OUTLET HOLES	OUTLET HOLE DIA.	NO. OF CLOSURE PLUGS	FINISH	BOX QTY
36090	5	LUGS	3	1/2"	2	GRAY	40
36100	5	LUGS	3	3/4"	2	GRAY	40
36110	5	LUGS	3	1"	2	GRAY	40
36120	6	LUGS	5	1/2"	2	GRAY	40
36130	6	LUGS	5	3/4"	2	GRAY	40
36140	6	LUGS	5	1"	2	GRAY	40



# Weatherproof Boxes

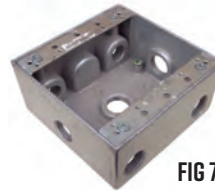
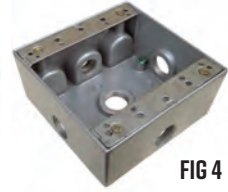
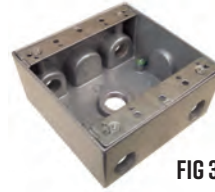
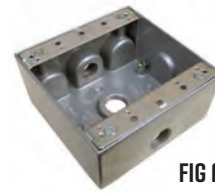


## Two Gang Deep – 30.5 Cubic Inch Capacity

Length 4-1/2" X Width 4-1/2" X Depth 2-3/16"

DIMENSIONS = INCHES

CAT. NO.	FIG	NO. OF OUTLET HOLES	OUTLET HOLE DIA.	NO. OF CLOSURE PLUGS	FINISH	BOX QTY
36210	1	3	1/2"	2	GRAY	40
36212	1	3	1/2"	2	WHITE	40
36214	1	3	1/2"	2	BRONZE	40
36220	1	3	3/4"	2	GRAY	40
36222	1	3	3/4"	2	WHITE	40
36224	1	3	3/4"	2	BRONZE	40
36230	2	4	1/2"	2	GRAY	40
36240	2	4	3/4"	2	GRAY	40
36250	3	5	1/2"	2	GRAY	40
36260	3	5	3/4"	2	GRAY	40
36270	4	5	1/2"	2	GRAY	40
36280	4	5	3/4"	2	GRAY	40
36290	5	6	1/2"	2	GRAY	40
36300	5	6	3/4"	2	GRAY	40
36310	6	7	1/2"	2	GRAY	40
36320	6	7	3/4"	2	GRAY	40
36330	7	7	1/2"	2	GRAY	40
36340	7	7	3/4"	2	GRAY	40
36350	8	9	1/2"	2	GRAY	40
36360	8	9	3/4"	2	GRAY	40



## Two Gang Deep – 37 Cubic Inch Capacity

Length 4-1/2" X Width 4-1/2" X Depth 2-5/8"

DIMENSIONS = INCHES

CAT. NO.	FIG	NO. OF OUTLET HOLES	OUTLET HOLE DIA.	NO. OF CLOSURE PLUGS	FINISH	BOX QTY
36370	9	5	1/2"	2	GRAY	20
36380	9	5	3/4"	2	GRAY	20
36390	9	5	1"	2	GRAY	20
36400	10	7	1/2"	2	GRAY	20
36410	10	7	3/4"	2	GRAY	20
36420	10	7	1"	2	GRAY	20



# Weatherproof Box Extensions & Adapter Rings

- (36520~36550) Includes Closure Plugs
- Fits All Universal Type Weatherproof Boxes
- Gasket & Mounting Screws Supplied
- Powder Coat Finish
- Seamless Die Cast Aluminum

DIMENSIONS = INCHES

CAT. NO.	FIG	NO. OF OUTLET HOLES	OUTLET HOLE DIA.	NO. OF CLOSURE PLUGS	FINISH	BOX QTY
<b>ONE GANG EXTENSION RING</b>						
9.3 CUBIC INCH CAPACITY						
LENGTH 4-9/16" X WIDTH 2-13/16" X DEPTH 1"						
36510	8	-	-	-	GRAY	50
<b>TWO GANG EXTENSION RING</b>						
16.4 CUBIC INCH CAPACITY						
LENGTH 4-9/16" X WIDTH 4-9/16" X DEPTH 1"						
36512	-9	-	-	-	GRAY	50
<b>ONE GANG FLANGED BOX EXTENSION ADAPTOR</b>						
12.8 CUBIC INCH CAPACITY						
LENGTH 5-1/4" X WIDTH 3-1/2" X DEPTH 1-1/2" 6"						
36520	10	4	1/2"	2	GRAY	40
36530	10	4	3/4"	2	GRAY	40
36540	11	6	1/2"	2	GRAY	40
36550	11	6	3/4"	2	GRAY	40





# 4" Round Weatherproof Boxes & Extensions



FIG 1



FIG 2

- Includes Closure Plugs
- Ground Screw Installed in Boxes
- Seamless Die Cast Aluminum
- Powder Coat Finish
- Individually Packaged
- Box Extensions Include Gasket

15.8 Cubic Inch Capacity - 1-1/2" Deep

DIMENSIONS = INCHES

CAT. NO.	FIG	NO. OF OUTLET HOLES	OUTLET HOLE DIA.	NO. OF CLOSURE PLUGS	FINISH	BOX QTY
<b>4" ROUND WEATHERPROOF BOXES</b>						
36610	1	5	1/2"	4	GRAY	40
36612	1	5	1/2"	4	WHITE	40
36614	1	5	1/2"	4	BRONZE	40
36620	1	5	3/4"	4	GRAY	40
<b>4" ROUND WEATHERPROOF BOX EXTENSIONS</b>						
36710	2	4	1/2"	3	GRAY	40
36720	2	4	3/4"	3	GRAY	40

# 4" Round Weatherproof Covers



FIG 1



FIG 2



FIG 3



FIG 4

- Includes Closure Plugs
- Gasket & Mounting Screws Supplied
- Seamless Die Cast Aluminum
- Powder Coat Finish
- Individually Packaged

DIMENSIONS = INCHES

CAT. NO.	FIG	NO. OF OUTLET HOLES	OUTLET HOLE DIA.	NO. OF CLOSURE PLUGS	FINISH	BOX QTY
36810	1	1	1/2"	-	GRAY	50
36812	1	1	1/2"	-	WHITE	50
36814	1	1	1/2"	-	BRONZE	50
36830	2	3	1/2"	1	GRAY	50
36832	2	3	1/2"	1	WHITE	50
36834	2	3	1/2"	1	BRONZE	50
36840	3	3	1/2"	1	GRAY	50
36842	3	3	1/2"	1	WHITE	50
36844	3	3	1/2"	1	BRONZE	50
36850	4	BLANK			GRAY	100

# Weatherproof Switch Covers



37290



37291

- Weatherproof Protection for On-Off Switch Applications
- Seamless Die Cast Aluminum
- Powder Coat Finish
- Pre-Installed Gasket & Mounting Screws Supplied

CAT. NO.	DESCRIPTION	COLOR	CASE QTY
37290	SINGLE TOGGLE SWITCH	GRAY	50
37291	2 TOGGLE SWITCH	GRAY	24

# One Gang Weatherproof Covers



- Self Closing Lids
- Lampholder Covers Include Closure Plugs
- Gasket & Mounting Screws Included
- Seamless Die Cast Aluminum
- Powder Coat Finish
- Individually Packaged

## Horizontal One Gang Covers

CAT. NO.	FIG	DESCRIPTION	FINISH	BOX QTY
37010	1	DUPLEX RECEPTACLE	GRAY	50
37012	1	DUPLEX RECEPTACLE	WHITE	50
37014	1	DUPLEX RECEPTACLE	BRONZE	50
37020	2	GFCI/DECORATOR	GRAY	50
37022	2	GFCI/DECORATOR	WHITE	50
37024	2	GFCI/DECORATOR	BRONZE	50



FIG 1



FIG 2

## Vertical One Gang Covers

CAT. NO.	FIG	DESCRIPTION	FINISH	BOX QTY
37110	3	SINGLE RECEPTACLE	GRAY	50
37112	3	SINGLE RECEPTACLE	WHITE	50
37114	3	SINGLE RECEPTACLE	BRONZE	50
37120	4	DUPLEX RECEPTACLE	GRAY	50
37122	4	DUPLEX RECEPTACLE	WHITE	50
37124	4	DUPLEX RECEPTACLE	BRONZE	50
37130	5	GFCI/DECORATOR	GRAY	50
37132	5	GFCI/DECORATOR	WHITE	50
37134	5	GFCI/DECORATOR	BRONZE	50
37150	6	20A & 30A TWIST LOCK RECEPTACLE 1.625" OPENING	GRAY	50
37160	6	30A 3 & 4 WIRE TWIST LOCK RECEPTACLE 1.75" OPENING	GRAY	50
37170	7	30A DRYER & 50A RANGE RECEPTACLE 2.125" OPENING	GRAY	50
37180	8	BLANK	GRAY	100
37182	8	BLANK	WHITE	100
37184	8	BLANK	BRONZE	100



FIG 3



FIG 4



FIG 5



FIG 6



FIG 7



FIG 8

## Rectangular Lampholder Covers

DIMENSIONS = INCHES

CAT. NO.	FIG	DESCRIPTION	NO. OF CLOSURE PLUGS	FINISH	BOX QTY
37310	9	1 - 1/2" HOLE	-	GRAY	50
37312	9	1 - 1/2" HOLE	-	WHITE	50
37314	9	1 - 1/2" HOLE	-	BRONZE	50
37330	10	3 - 1/2" HOLE	1	GRAY	50
37332	10	3 - 1/2" HOLE	1	WHITE	50
37334	10	3 - 1/2" HOLE	1	BRONZE	50



FIG 9

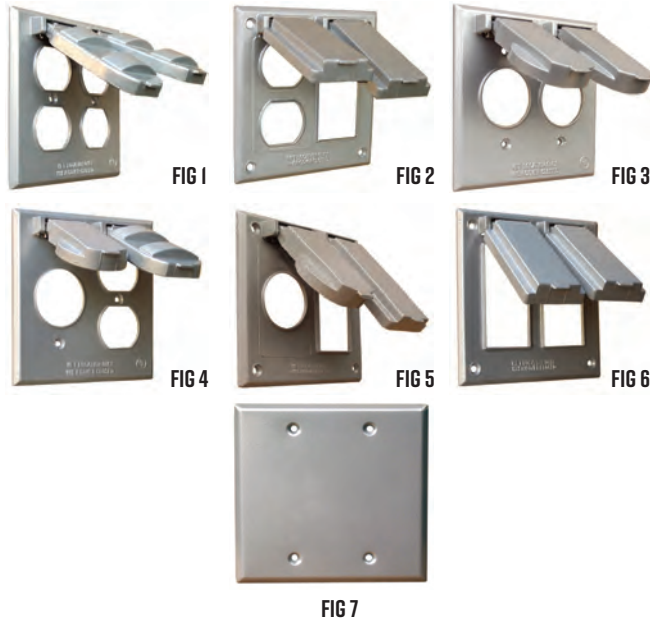


FIG 10

# Two Gang Weatherproof Covers



- Gasket & Mounting Screws Supplied
- Seamless Die Cast Aluminum
- Powder Coat Finish
- Self Closing Spring Loaded Lids
- Individually Packaged



CAT. NO.	FIG	DESCRIPTION	FINISH	BOX QTY
37210	1	2 DUPLEX RECEPTACLES	GRAY	50
37212	1	2 DUPLEX RECEPTACLES	WHITE	50
37214	1	2 DUPLEX RECEPTACLES	BRONZE	50
37220	2	1 GFCI & 1 DUPLEX RECEPTACLE	GRAY	50
37222	2	1 GFCI & 1 DUPLEX RECEPTACLE	WHITE	50
37224	2	1 GFCI & 1 DUPLEX RECEPTACLE	BRONZE	50
37226	3	2 SINGLE RECEPTACLES 1.375" OPENING	GRAY	50
37230	4	1 SINGLE RECEPTACLE 1.375" & 1 DUPLEX RECEPTACLE	GRAY	50
37240	5	1 GFCI & 1 SINGLE RECEPTACLE 1.375"	GRAY	50
37250	6	2 GFCI RECEPTACLES	GRAY	50
37260	7	BLANK COVER	GRAY	50
37262	7	BLANK COVER	WHITE	50
37264	7	BLANK COVER	BRONZE	50

# Multi-Use Weatherproof Covers



- Heavy-Duty Aluminum Die Cast Metal Construction
- 1 Gang - 10 Device Configurations
- 2 Gang - 25 Device Configurations
- 3 Gang - 125 Device Configurations
- 2 Gang w/Switch - 5 Configurations
- Heavy Duty Hidden Hinge
- Lockable Tab Feature Secures Cover
- Pre-Installed Gasket
- Snap-In device adapter requires no tools to install
- Easy-To-Assemble building block style adapters

DIMENSIONS = INCHES

CAT. NO.	DESCRIPTION	CONFIGURATIONS	LENGTH	WIDTH	CASE QTY
38920	1 GANG	10	4.6"	3.0"	50
38921	2 GANG	25	4.6"	4.5"	24
38922	3 GANG	125	4.6"	6.3"	20
38923	2 GANG W/SWITCH	5	4.6"	4.5"	50

# Lampholders



- Gasket & Mounting Screws Supplied
- Seamless Die Cast Aluminum
- Powder Coat Finish
- For 75 Thru 150 Watt PAR 38 Lamps
- Extra Long Wire Leads for Easy Hook-Up
- Locking Swivel Knuckle Assures Positive Lamp Positioning and Provides Pinpoint Directional Aiming
- Each Lampholder Supplied With a Copper Screw Shell Porcelain Socket (37408 Aluminum Shell), Inside Gasket & 1/2" Locknut
- Press Fit Internal Heat Resistant Gasket Designed Not to Come Out When Bulb is Changed
- For Extra Waterproof Sealing Protection, Optional External Gasket #38407 available (see accessories)
- Individually Packaged



CAT. NO.	FINISH	BOX QTY
37408	UNPAINTED	50
37410	GRAY	50
37412	WHITE	50
37414	BRONZE	50

# Hole Plugs and Accessories



FIG 1



FIG 2



FIG 3



FIG 4



FIG 5



FIG 6

**GASKETS**

- 1 Gang Blank
- 1 Gang Decorative
- 1 Gang Switch
- 1 Gang Single Receptacle

KO Dim: 1.43" 1.76" 2.18"

Use  
37930

FIG 7

**GASKETS**

- 2 Gang Blank
- 2 Gang Decorative
- 2 Gang Switch
- 2 Gang Single Receptacle

Use  
37934

FIG 8

DIMENSIONS = INCHES

CAT. NO.	FIG.	DESCRIPTION	FINISH	BAG QTY	BOX QTY
37510	1	1/2" HOLE PLUG	GRAY	10	800
37512	1	1/2" HOLE PLUG	WHITE	10	800
37514	1	1/2" HOLE PLUG	BRONZE	10	800
37520	1	3/4" HOLE PLUG	GRAY	10	500
37522	1	3/4" HOLE PLUG	WHITE	10	500
37524	1	3/4" HOLE PLUG	BRONZE	10	500
37530	1	1" HOLE PLUG	GRAY	10	300
37910	3	MOUNTING LUG	GRAY	10	500
37920	4	LAMPHOLDER INSIDE GASKET	---	10	300
37936	5	4" ROUND GASKET	---	10	100
38407	6	EXTERNAL PAR LAMPHOLDER GASKET (37408-37414)	---	-	250
37930	7	1 GANG SWITCH/RECEPTACLE/GFCI GASKET	---	10	200
37934	8	2 GANG SWITCH/RECEPTACLE/GFCI GASKET	---	10	100



# Non-Metallic Recessed Boxes

**NEW**



- Perfect in homes, apartments, co-ops, condominiums and offices
- Flush Mounting, Installs behind wall units and entertainment centers
- Polycarbonate Construction ETL & CSA Listed, code-compliant
- Includes FacePlate
- Receptacles are 15A, 125V Self Grounding



FIG 3      FIG 2      FIG 3      FIG 4      FIG 5      FIG 6



FIG 7      FIG 8      FIG 9      FIG 10

DIMENSIONS = INCHES

CAT. NO.	FIG	DESCRIPTION	DIMENSIONS			CTN QTY
			LENGTH	WIDTH	DEPTH	
84004	1	DECORATOR RECESSED DUPLEX RECEPTACLE WITH WALL PLATE	4.5	2.75	1.94	60
84005	2	SINGLE-GANG RECESSED RECEPTACLE WITH WALL PLATE	4.5	2.75	1.98	60
84006	3	SINGLE-GANG RECESSED PLUG WITH WALL PLATE	4.5	2.75	1.74	60
84007	4	TWO GANG LOW VOLTAGE CABLE PLATE & RECESSED PLUG	4.5	5.18	1.74	60
84008	5	TWO GANG LOW VOLTAGE CABLE PLATE WITH RECESSED RECEPTACLE	4.5	4.6	1.97	60
84009	6	SINGLE-GANG RECESSED LOW VOLTAGE CABLE PLATE	4.5	2.75	1.65	60
84010	7	2-GANG RECESSED LOW VOLTAGE CABLE PLATE	4.5	4.55	1.65	60
84011	8	SINGLE BRUSH DECORATOR PLATE WITH WALLPLATE	4.09	2.75	.42	200
84012	9	SPLIT STYLE TV PLATE WITH FLEXIBLE AV/HDMI CABLE PASS-THROUGH WITH WALLPLATE	4.5	2.75	0.22	200
84013	10	RECESSED PRO PROWER INSTALLTION KIT THIS SET OF PRODUCT INCLUDES THE FOLLOWING PRODUCTS: 1 PC 84007 1 PC 84008 2 PCS JUNCTION BOX 2 PCS LOW VOLTAGE MOUNTING BRACKET 1 PC JUMPER CABLE 1 PC POWER CORD	-	-	-	12

Recessed Boxes BOXES